

Figure 1. Family of antibiotics prescribed during 2020 in Castelló de la Plana according to data provided by the *Health Area Pharmacy Service* of Castelló (Spain).

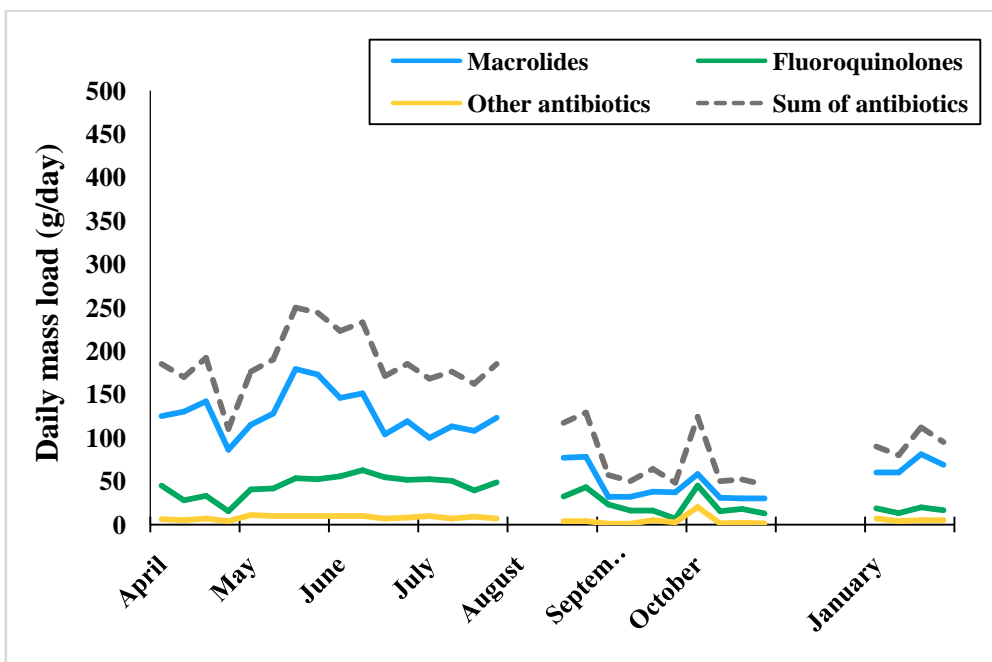
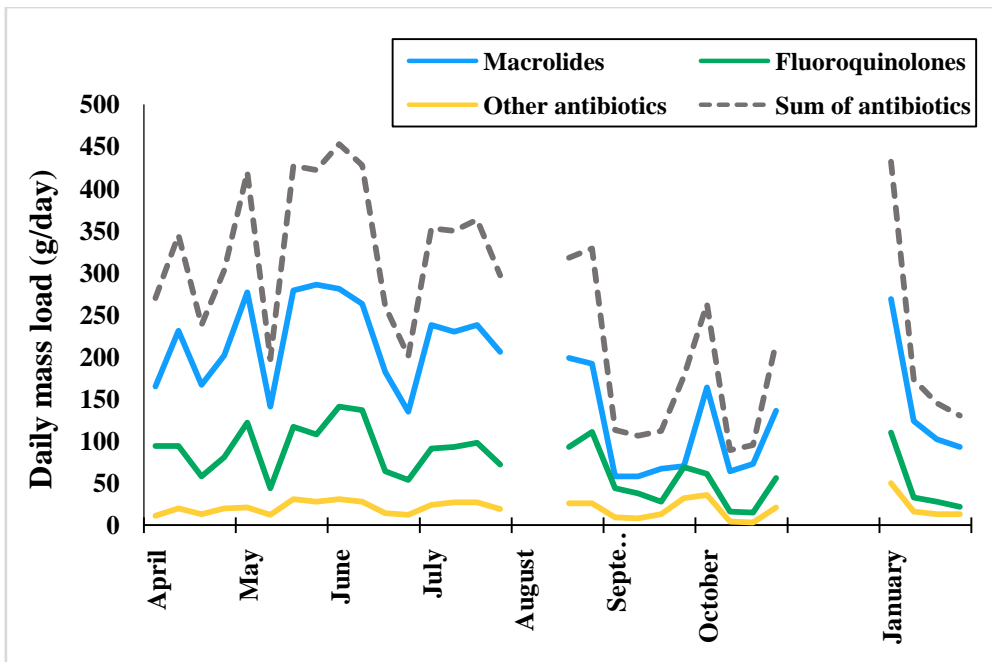


Figure 2. Annual evolution (from April 2021 to January 2022) of daily mass loads of antibiotics studied in both IWW (top) and EWW (bottom) samples. It should be noted that no data was available at the beginning of August.

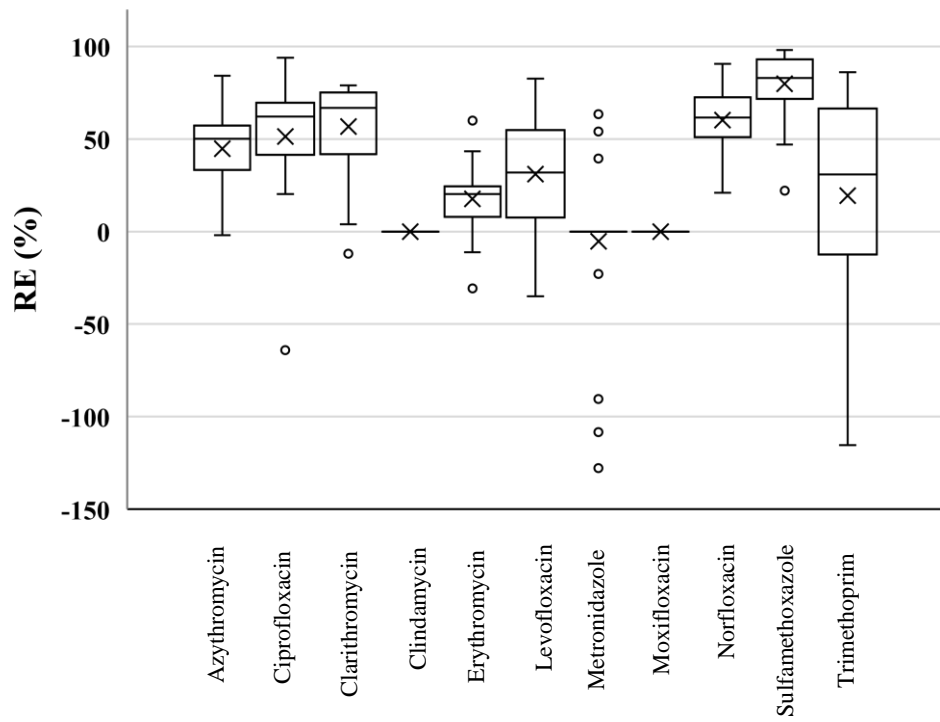


Figure 3. Boxplot representing RE (%) of antibiotics detected in wastewater from the WWTP studied.

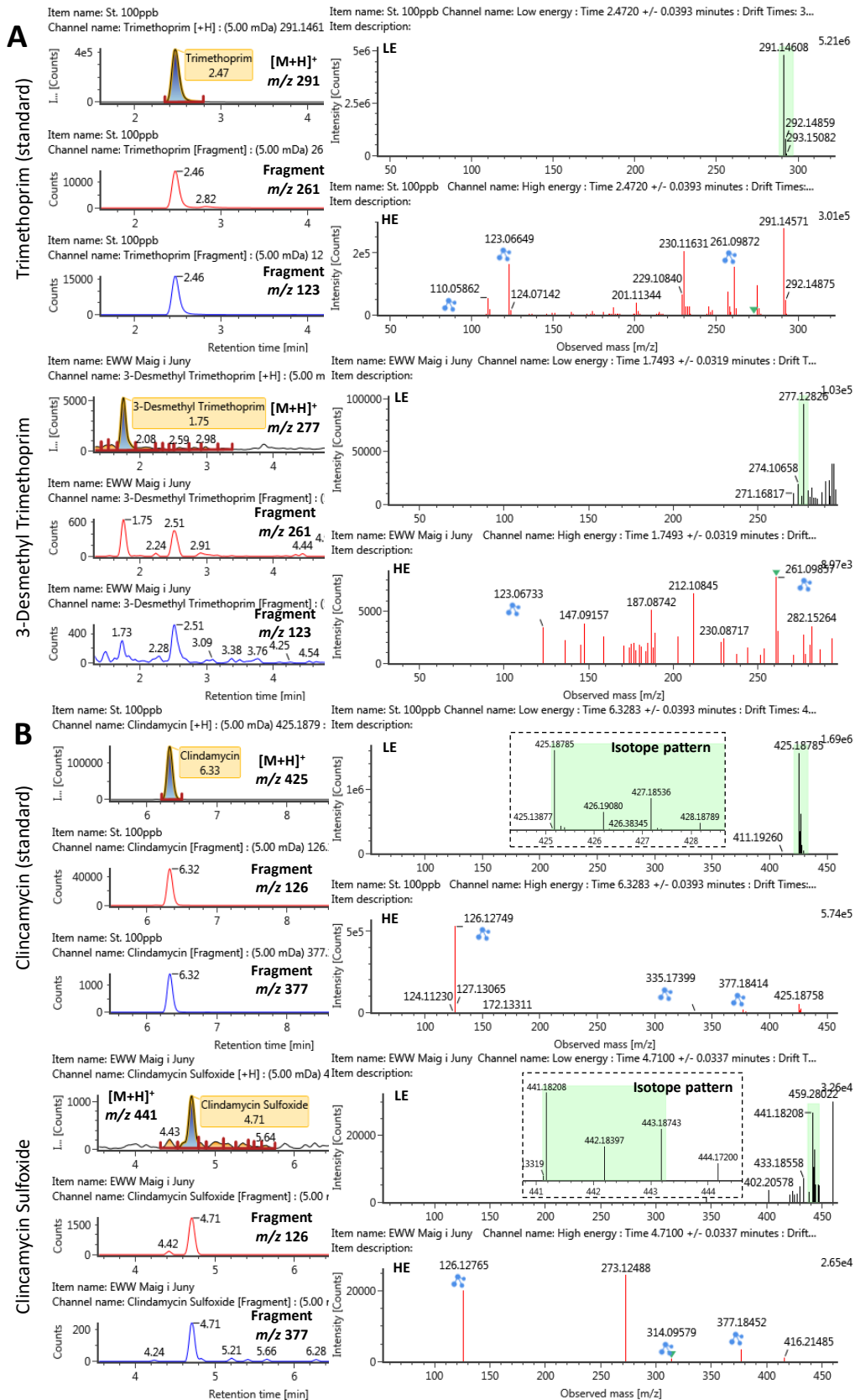


Figure 4. Examples of antibiotic metabolites identification during UHPLC-IMS-HRMS screening based on accurate-mass fragmentation compared with parent compounds. **A** 3-desmethyl trimethoprim (Level 3). **B** Clindamycin sulfoxide (Level 2b).

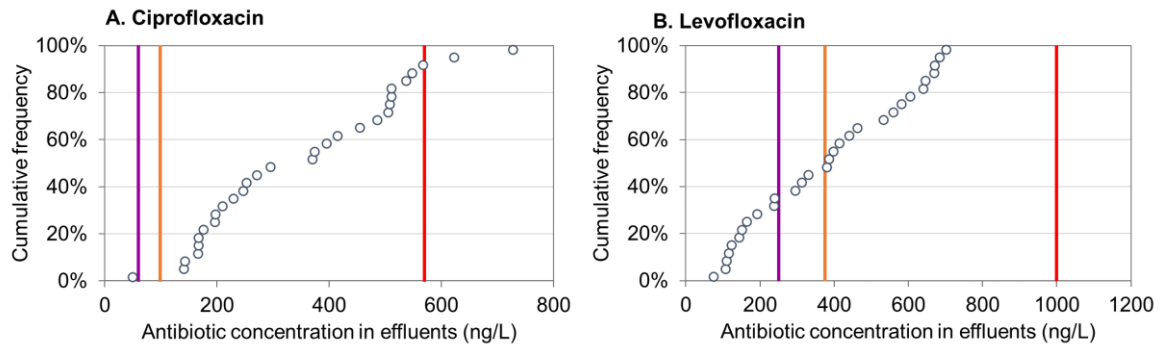


Figure 5. Cumulative frequency distribution of ciprofloxacin (A) and levofloxacin (B) concentrations in WWTP effluents and $PNEC_{ecotox}$ (red), $PNEC_{resistance}$ calculated according to Bengtsson-Palme et al. (2016) (purple), and $PNEC_{resistance}$ calculated according to Rico et al. (2017) (orange).