

Revealing the nature of defects in α -Ag₂WO₄ by positron annihilation lifetime spectroscopy: A joint experimental and theoretical study

Marcelo Assis¹, Miguel Adolfo Ponce², Amanda Fernandes Gouveia^{3,4}, Daniele Souza⁵, João Paulo de Campos da Costa¹, Vinícius Teodoro¹, Yara Galvão Gobato⁵, Juan Andrés⁴, Carlos Macchi⁶, Alberto Somoza⁶, Elson Longo¹

¹CDMF, LIEC, Chemistry Department - Federal University of São Carlos - (UFSCar), P.O. Box 676, 13565-905 São Carlos, SP, Brazil.

²Institute of Materials Science and Technology (INTEMA), Mar del Plata, Argentina.

³Institute of Chemistry, State University of Campinas, Unicamp, 13083-970, Campinas, SP, Brazil.

⁴Department of Physical and Analytical Chemistry, University Jaume I (UJI), Castelló 12071, Spain.

⁵Physics Department - Federal University of São Carlos - (UFSCar), P.O. Box 676, 13565-905 São Carlos, SP, Brazil.

⁶CIFICEN (UNCPBA-CICPBA-CONICET) and Instituto de Física de Materiales Tandil (UNCPBA), Pinto 399, B7000GHG Tandil, Argentina.

SUPPLEMENTARY INFORMATION

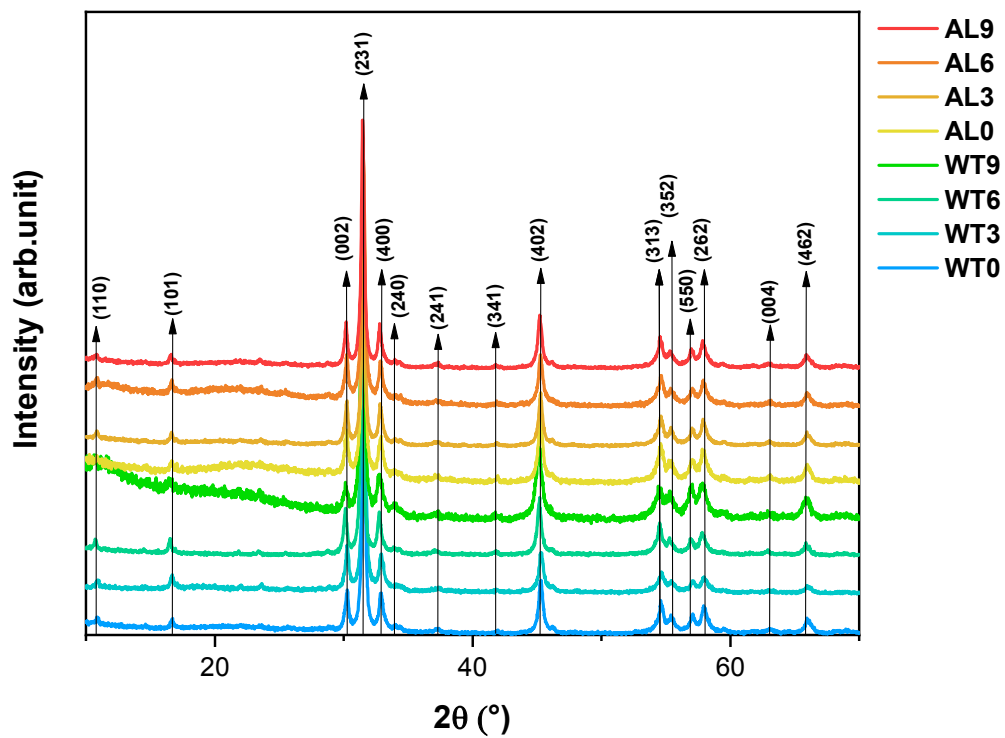


Figure SI-1. X-ray diffraction for α - Ag_2WO_4 samples.

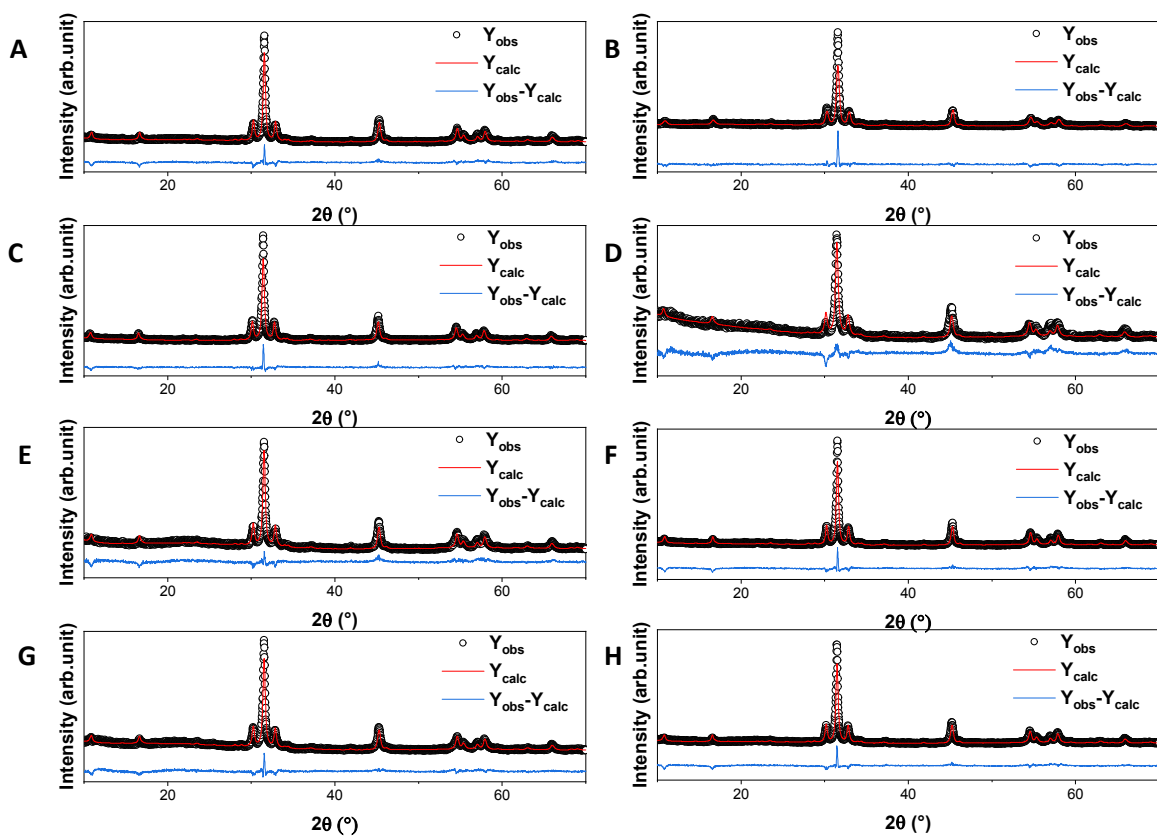


Figure SI-2. Rietveld refinements for the samples A) WT0, B) WT3, C) WT6, D) WT9, E) AL0, F) AL3, G) AL6, and H) AL9.

Table SI-1. Rietveld refinements data for the samples.

Sample	a (Å)	b (Å)	c (Å)	v (Å³)	FWHM (°)	R_{wp}	R_p	χ²
WT0	10.8170	12.0244	5.8975	770.911	0.26	0.1168	0.920	2.234
WT3	10.8694	12.0293	5.8993	771.345	0.28	0.1073	0.0891	1.960
WT6	10.8736	12.0258	5.8988	771.349	0.29	0.1141	0.0937	1.829
WT9	10.8863	12.0357	5.9067	773.930	0.40	0.1094	0.0747	2.410
AL0	10.8713	12.0154	5.8911	769.910	0.26	0.1081	0.0864	2.544
AL3	10.8747	12.0218	5.8956	770.764	0.26	0.1070	0.0864	1.917
AL6	10.8775	12.0237	5.8973	771.292	0.27	0.0945	0.0628	1.831
AL9	10.8776	12.0293	5.8998	771.985	0.33	0.1041	0.0879	2.114

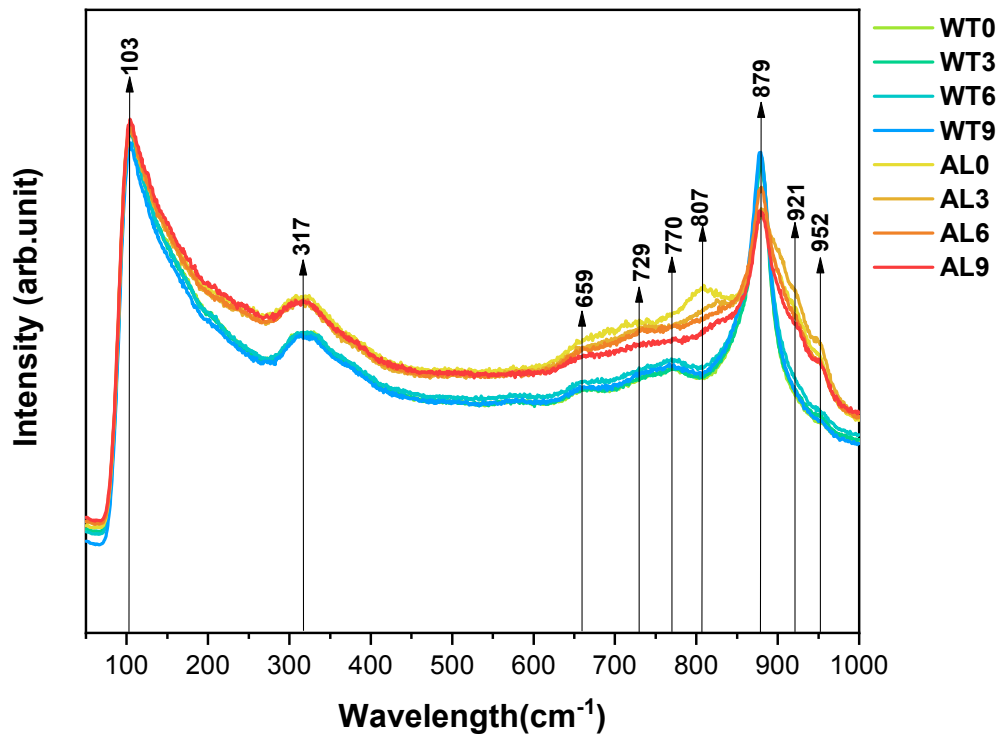


Figure SI-3. Raman spectra obtained for α - Ag_2WO_4 samples.

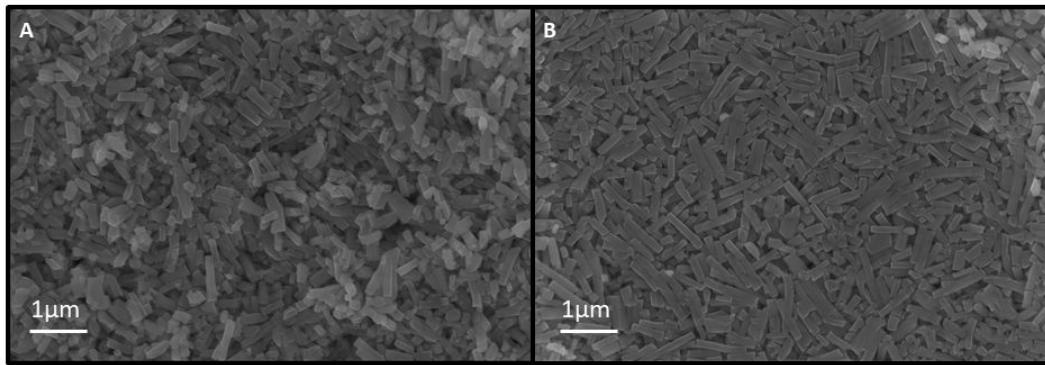


Figure SI-4. FE-SEM images for sample a) WT and b) AL.

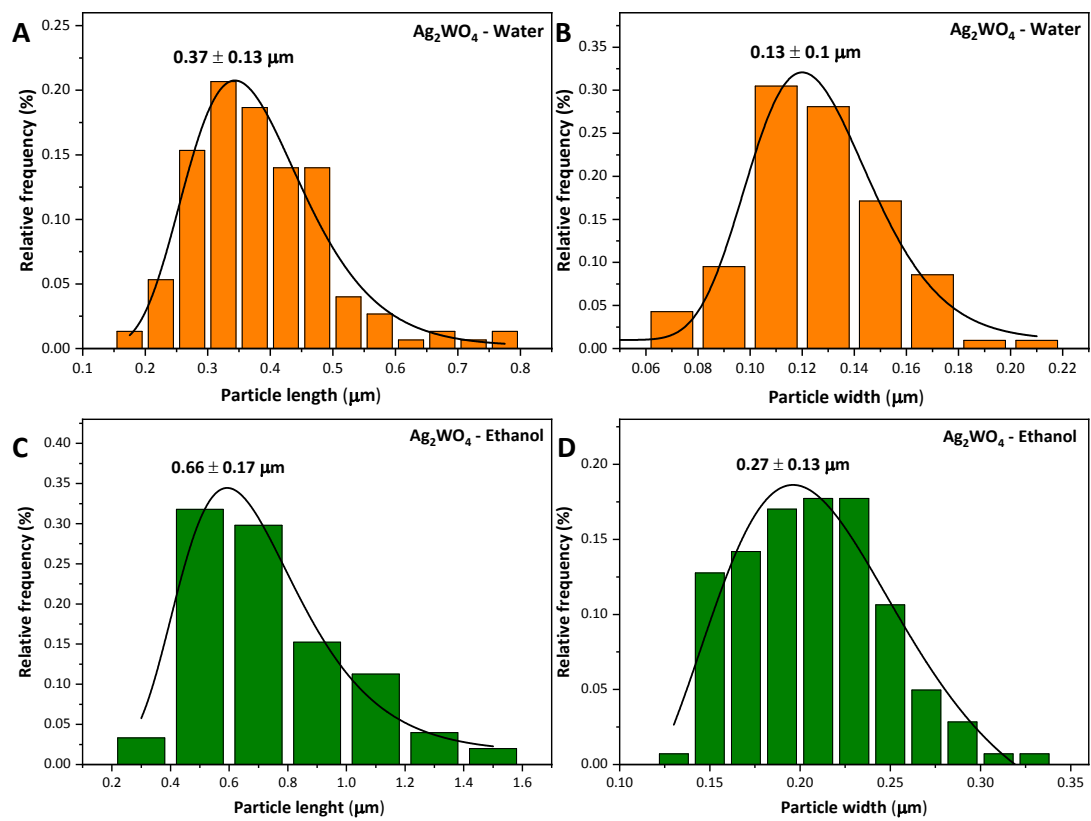


Figure SI-5. Distribution of length and width for samples A-B) WT and C-D) AL.

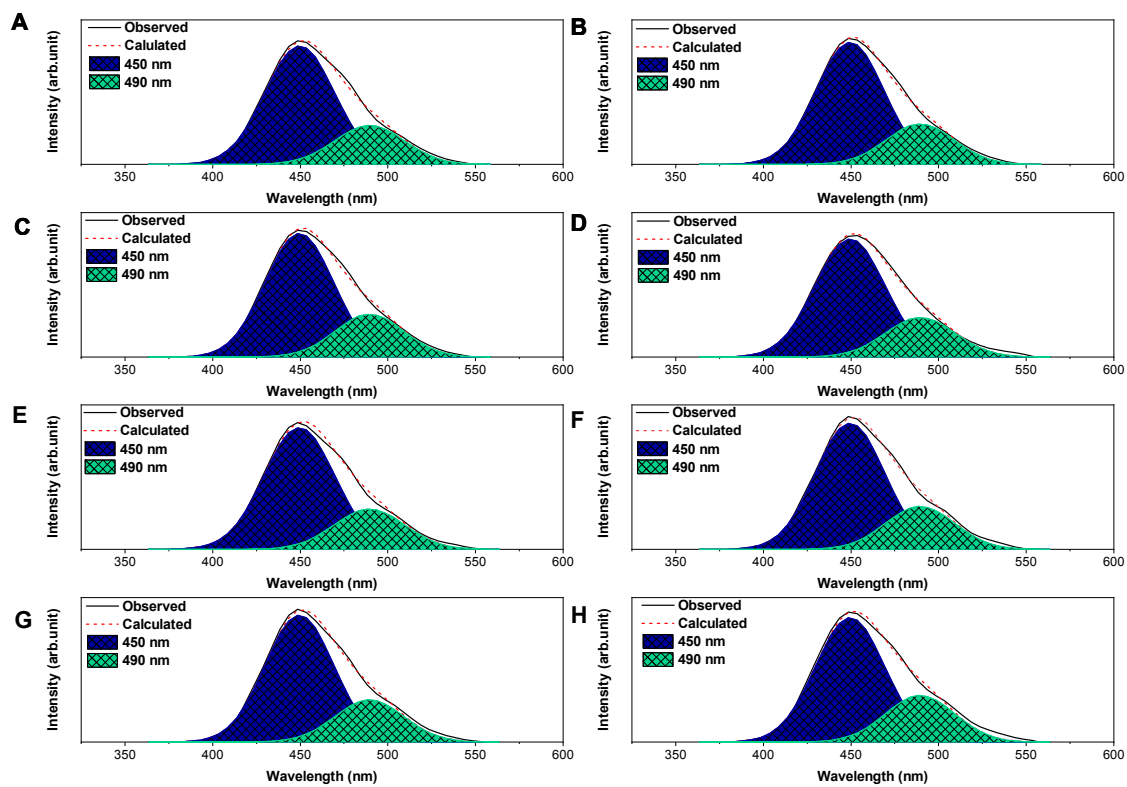


Figure SI-5. PL emission for the samples A) WT0, B) WT3, C) WT6, D) WT9, E) AL0, F) AL3, G) AL6, and H) AL9.