

Review Article

Cite this article: Karyotaki E *et al* (2018). Is self-guided internet-based cognitive behavioural therapy (iCBT) harmful? An individual participant data meta-analysis. *Psychological Medicine* **48**, 2456–2466. <https://doi.org/10.1017/S0033291718000648>

Received: 22 August 2017
Revised: 2 January 2018
Accepted: 16 February 2018
First published online: 15 March 2018

Key words:

Depression; iCBT; internet-based treatment; self-guided psychotherapy

Author for correspondence:

Eirini Karyotaki, E-mail: e.karyotaki@vu.nl

Is self-guided internet-based cognitive behavioural therapy (iCBT) harmful? An individual participant data meta-analysis

Eirini Karyotaki¹, Lise Kemmeren², Heleen Riper¹, Jos Twisk³,
Adriaan Hoogendoorn², Annet Kleiboer¹, Adriana Mira^{4,5}, Andrew Mackinnon^{6,7},
Björn Meyer⁸, Cristina Botella^{4,5}, Elizabeth Littlewood⁹, Gerhard Andersson^{10,11},
Helen Christensen⁶, Jan P. Klein¹², Johanna Schröder¹³, Juana Bretón-López^{4,5},
Justine Scheider¹⁴, Kathy Griffiths¹⁵, Louise Farrer¹⁶, Marcus J. H. Huibers¹,
Rachel Phillips¹⁷, Simon Gilbody⁹, Steffen Moritz¹³, Thomas Berger¹⁸,
Victor Pop¹⁹, Viola Spek¹⁹ and Pim Cuijpers¹

¹Department of Clinical Psychology, VU Amsterdam and Institute for Public Health Research, Amsterdam, the Netherlands; ²Department of Psychiatry, GGZ inGeest and VU University Medical Centre, Amsterdam Public Health research institute, Amsterdam, the Netherlands; ³Department of Epidemiology and Biostatistics and Amsterdam Institute for Public Health Research, VU University Amsterdam, Amsterdam, the Netherlands; ⁴Department of Psychology and Technology, Jaume University, Castellon, Spain; ⁵CIBER Fisiopatología Obesidad y Nutrición (CIBERObn), Instituto Salud Carlos III, Spain; ⁶Black Dog Institute and University of New South Wales, Prince of Wales Hospital, Sydney, Australia; ⁷Center for Mental Health, University of Melbourne, Melbourne, Australia; ⁸Research Department, Germany and Department of Psychology, City University, Gaia AG, Hamburg, London, UK; ⁹Department of Health Sciences, University of York, York, UK; ¹⁰Department of Behavioural Sciences and Learning, Sweden Institute for Disability Research, Linköping University, Linköping, Sweden; ¹¹Department of Clinical Neuroscience, Psychiatry Section, Karolinska Institute for Disability Research, Stockholm, Sweden; ¹²Department of Psychiatry and Psychotherapy, Lübeck University, Lübeck, Germany; ¹³Department of Psychiatry and Psychotherapy, University Medical Center Hamburg-Eppendorf, Hamburg, Germany; ¹⁴Institute of Mental Health, University of Nottingham, Nottingham, UK; ¹⁵Research School of Psychology, College of Biology, Medicine & Environment, Australian National University, Canberra, Australia; ¹⁶Centre for Mental Health Research, The Australian National University, Canberra, Australia; ¹⁷Department of Primary Care and Public Health Sciences, King's College London, London, UK; ¹⁸Department of Clinical Psychology and Psychotherapy, University of Bern, Bern, Switzerland and ¹⁹CoRPS – Center of Research on Psychology in Somatic diseases, Tilburg University, Tilburg, the Netherlands

Abstract

Background. Little is known about potential harmful effects as a consequence of self-guided internet-based cognitive behaviour therapy (iCBT), such as symptom deterioration rates. Thus, safety concerns remain and hamper the implementation of self-guided iCBT into clinical practice. We aimed to conduct an individual participant data (IPD) meta-analysis to determine the prevalence of clinically significant deterioration (symptom worsening) in adults with depressive symptoms who received self-guided iCBT compared with control conditions. Several socio-demographic, clinical and study-level variables were tested as potential moderators of deterioration.

Methods. Randomised controlled trials that reported results of self-guided iCBT compared with control conditions in adults with symptoms of depression were selected. Mixed effects models with participants nested within studies were used to examine possible clinically significant deterioration rates.

Results. Thirteen out of 16 eligible trials were included in the present IPD meta-analysis. Of the 3805 participants analysed, 7.2% showed clinically significant deterioration (5.8% and 9.1% of participants in the intervention and control groups, respectively). Participants in self-guided iCBT were less likely to deteriorate (OR 0.62, $p < 0.001$) compared with control conditions. None of the examined participant- and study-level moderators were significantly associated with deterioration rates.

Conclusions. Self-guided iCBT has a lower rate of negative outcomes on symptoms than control conditions and could be a first step treatment approach for adult depression as well as an alternative to watchful waiting in general practice.

© Cambridge University Press 2018. This is an Open Access article, distributed under the terms of the Creative Commons Attribution licence (<http://creativecommons.org/licenses/by/4.0/>), which permits unrestricted re-use, distribution, and reproduction in any medium, provided the original work is properly cited.

Introduction

Depression is a common and major health issue that is associated with a considerable personal and societal burden (Reddy, 2010; Lepine & Briley, 2011). Self-guided forms of internet-based

cognitive behaviour therapy (iCBT) can increase accessibility and reduce the costs of depression treatment (Hedman *et al.* 2012; Muñoz *et al.* 2015). Over the past decade, free or commercially provided self-guided iCBT programmes have been made available to individuals with depression (Kaltenthaler *et al.* 2006). However, there is an ongoing discussion about the advantages and disadvantages of such programmes (Andersson & Titov, 2014). Many healthcare systems remain hesitant to implement self-guided iCBT. Among the barriers to implementation are concerns regarding safety and effectiveness (Waller & Gilbody, 2009). Offered as first stage treatment, self-guided iCBT has been criticised as potentially delaying individuals suffering from depression receiving effective clinical services (Robinson *et al.* 1998; Ybarra & Eaton, 2005).

Our recent individual participant data (IPD) meta-analysis demonstrated that self-guided iCBT produces encouraging effects although average effects are small in magnitude (Karyotaki *et al.* 2017). Small effects can be clinically useful and relevant, for instance in countries where mental healthcare services are scarce or inaccessible for other reasons (Muñoz *et al.* 2015; Karyotaki *et al.* 2017). Despite the ample evidence regarding the overall benefits of iCBT, possible effects harmful to individuals have been infrequently monitored. As with any other potentially effective treatment, iCBT could also result in undesirable outcomes or fail to arrest substantial ongoing deterioration (Dimidjian & Hollon, 2010). The issue of negative effects is crucial for clinical decision-making, yet limited systematic examination of this issue exists for iCBT.

In contrast to the vast majority of pharmacological trials, which rigorously measure and report adverse outcomes, only half of psychotherapeutic trials report undesirable outcomes, in particular substantial symptom deterioration (Jonsson *et al.* 2014; Vaughan *et al.* 2014). Previous research has shown that some forms of psychotherapy can be hazardous for some patients e.g. prolonged imaginal exposure may result in worsening of symptoms in some patients with posttraumatic stress disorder (Foa *et al.* 2005). With regard to self-guided psychological treatment, it has been argued that it may not be appropriate for all individuals (Newman, 2000). For instance, self-guided interventions may not be intensive enough for individuals with severe symptoms (Mohr *et al.* 1990). Moreover, lack of therapeutic support may jeopardise therapy outcomes as the progress of patients is not monitored (Newman *et al.* 2003). Most self-guided interventions are not tailored to the current depressive status of the individual and, accordingly, do not respond to symptom deterioration (Andersson & Titov, 2014).

To our knowledge symptom deterioration has not been examined in self-guided iCBT to date. It is therefore clearly important to determine the prevalence and extent of symptom deterioration in self-guided iCBT. Furthermore, given that not everyone receiving self-guided iCBT experiences worsening of symptoms, research examining for whom this particular form of therapy may be harmful is sorely needed: individuals likely to deteriorate could be diverted to other more appropriate treatment options. However, study-level meta-analyses and randomised controlled trials (RCTs) cannot thoroughly examine moderators of deterioration due to inadequate power (Bower *et al.* 2013). Novel methodological approaches, such as IPD meta-analysis, are needed to identify who may experience adverse effects from self-guided iCBT. IPD meta-analysis allows us to move beyond the 'grand mean' to explore change at the individual level as well as to examine study variability (e.g. level of adherence, settings, etc.)

The present IPD meta-analysis examined rates of clinically significant symptom deterioration under self-guided iCBT compared

with control conditions in adults with depression. In addition, we examined several socio-demographic and clinical variables as potential moderators of symptom deterioration. In the context of the present paper, the term 'self-guided iCBT' is defined as CBT treatment delivered via the Internet without any professional support related to the therapeutic content. The present analysis focuses on the prevalence of deterioration (numbers of persons affected) in contrast to our previous IPD meta-analysis of the present dataset in which we focused on population average outcomes due to self-guided iCBT on depression severity (Karyotaki *et al.* 2017)

Methods

Studies selection process

We included IPD from randomised controlled trials comparing self-guided iCBT to a control condition (waiting list, treatment as usual, attention placebo or other non-active controls) for adults (≥ 18 years old) with symptoms of depression based either on a diagnostic interview or validated self-report scales. We excluded studies that did not primarily target depression. No limits were applied for language and publication status.

To identify eligible studies, we used an existing database of trials focusing on psychological therapies for adults with depression (Cuijpers *et al.* 2008). This database was developed in 2006 and is updated annually by a systematic literature search in four major bibliographic databases (PubMed, Embase, PsycINFO and Cochrane Library). The database was updated up to 1 January 2016 for the current search. In this search, various index and free terms of psychotherapy were used in combination with index and free terms of depression. Appendix A. presents the full electronic search string for PubMed. Two reviewers (PC and EK) examined 13 384 titles and abstracts independently. All full texts of papers that possibly met inclusion criteria according to one of the two reviewers were retrieved and checked for eligibility. Disagreement on the inclusion was solved through discussion. Additionally, references of recently published meta-analyses on this field were examined to ensure the inclusion of all eligible published trials. Finally, key researchers who are actively involved in this field were contacted to ask whether they were aware of unpublished trials on this topic or trials missed through the searches.

Data collection process and data items

We contacted the first or the senior author of the RCTs to request access to their datasets. In the case of no response, a reminder email was sent after 2 weeks and after 1 month. If no response was received 1 month after the first email, the study was excluded as unavailable. Authors provided IPD including socio-demographic variables (age, gender, educational level, employment status and relationship status), pre- and post-treatment depression scores, anxiety scores at baseline and the number of iCBT modules completed by each participant. All IPD were merged into one dataset. We also extracted study level variables available from the published reports of the included RCTs (type of control condition, recruitment method and level of support provided).

Risk of bias assessment

Two independent reviewers (EK and PC) assessed the risk of bias in the included studies according to the Cochrane risk of bias assessment tool (Higgins & Altman, 2008; Higgins & Green,

2011). We examined whether the included studies were at low or high risk of selection, performance, detection, attrition, reporting and other sources of bias. In cases of uncertainty, clarification was sought from the authors of the RCT.

Measures

The included studies used either the Beck Depression Inventory [BDI-I (Beck *et al.* 1961) or BDI-II (Beck *et al.* 1996)], the Centre for Epidemiological Studies Depression Scale [CES-D (Radloff, 1977)] or the Patient Health Questionnaire [PHQ-9 (Kroenke *et al.* 2001)] as outcome measures of depression severity.

We classified 'clinically significant deterioration' according to each participant's reliable change index (RCI) (Jacobson & Truax, 1991), which is the most commonly used method for calculating clinically significant negative effects. This method aims to ensure that each individual's deterioration could not be attributable to measurement error (Lambert *et al.* 1993) and thus might warrant clinical intervention in the context of an unsupervised intervention such as iCBT. An RCI of ± 1.96 indicates that the difference in scores is likely to be due to a real change in symptoms of an individual (95% confidence level). Participants showing a clinically significant change with an increase in their score (clinically significant negative change of more than -1.96) were classified as clinically significant deteriorated (Jacobson & Truax, 1991). A RCI was calculated separately for each of the studies, using their pre-treatment standard deviation, and the test-retest reliability coefficient of the outcome measure (BDI = 0.93, CES-D = 0.87, PHQ-9 = 0.84).

Finally, in a sensitivity analysis we calculated 'any deterioration' as any increase of equal or more than one point on depressive symptom scales (increase ≥ 1 BDI or CES-D or PHQ-9 point) from pre- to post-treatments. Any deterioration includes all deterioration rates (clinically significant or not).

Missing data

Missing outcome data at the post-treatment were multiply imputed. We generated one hundred imputed datasets based on the missing-at-random assumption ('mi impute mvn' in Stata version 13.1; StataCorp LP). These datasets, which consisted of the observed and the imputed deterioration rates, were analysed separately using the selected model and the results were combined using Rubin's rules (Rubin, 2004). We ran sensitivity analyses including only observed values to ensure the robustness of the results ('the complete case analysis').

Analysis

One-stage IPD

We performed a one-stage IPD meta-analysis in which the IPD from all included studies were merged, with participants nested within studies. A one-stage IPD approach is preferred over a two-stage approach because it allows for a more exact likelihood specification (Stewart & Parmar, 1993; Debray *et al.* 2013; Burke *et al.* 2016). We used the statistical software Stata (version 14.2) for conducting all analyses. A multilevel-mixed effects logistic regression was used to analyse the effect of the iCBT intervention on clinically significant deterioration and any deterioration. We used a random intercepts model with a random effect for each trial and fixed effect for condition (intervention *v.* control) using the 'melogit' command

in Stata. The binary variables 'clinically significant deterioration' and 'any deterioration' were used as fixed effect.

To explore the variation in outcomes between participants, we examined dichotomous and continuous baseline characteristics of the participants as potential moderators of clinically significant deterioration and of any deterioration. Moderation was tested by adding the interaction between each moderator and deterioration rates to the multilevel mixed-effects logistic regression model. Similarly, we examined whether adherence (defined as number of modules completed divided by the total number of treatment modules) predicted lower deterioration rates within the intervention group.

Two-stage IPD

In addition to the one-stage IPD, we performed a two-stage IPD to examine the effects of study-level variables. We calculated the odds ratio (OR) of deterioration for each study and we pooled the outcomes using a random effects model, chosen because considerable heterogeneity across studies was expected. The OR shows the probability that an event (deterioration) will occur in the intervention group (self-guided iCBT) compared with the probability that the same event occurring in the control group. An OR of more than 1 indicates increased probability that an event will occur in the intervention group while an OR < 1 shows increased probability that an event will occur in the control group (Deeks *et al.* 2008).

To examine heterogeneity, the I^2 -statistic was calculated. This is an indicator of heterogeneity expressed as a percentage: an I^2 value of 0% is interpreted as no heterogeneity, 25% as low, 50% as moderate and 75% as high heterogeneity (Cohen, 1988). We calculated the 95% confidence intervals (CI) around I^2 using the non-central chi-squared-based approach within the heterogeneity module for Stata (Orsini *et al.* 2006; Evangelou *et al.* 2007). Publication bias was examined by visually inspecting funnel plots and by using the Duval and Tweedie's trim and fill method, which yields an estimate of the effect size after adjusting for publication bias (Egger *et al.* 1997; Duval & Tweedie, 2000). We also conducted the Egger's test of the intercept to quantify the bias captured by the funnel plot and test whether it was significant³⁰.

Finally, we examined study-level moderators by conducting subgroup analyses using the mixed effects models in which studies were treated as random effects and subgroups were tested as fixed effects.

Sample representativeness

In our previous analysis (Karyotaki *et al.* 2017), we tested differences between 13 studies that provided IPD and three eligible studies that did not. Results indicated that there are no statistically significant differences in depression severity outcomes between the included and the unavailable trials (Karyotaki *et al.* 2017). This suggests that the present sample of studies is representative. However, we could not test differences between included and unavailable trials in the current analysis since deterioration rates are not reported by the published reports of the unavailable trials.

Results

Study selection

The systematic literature search resulted in 16 eligible studies for inclusion. The flowchart of the study selection process is

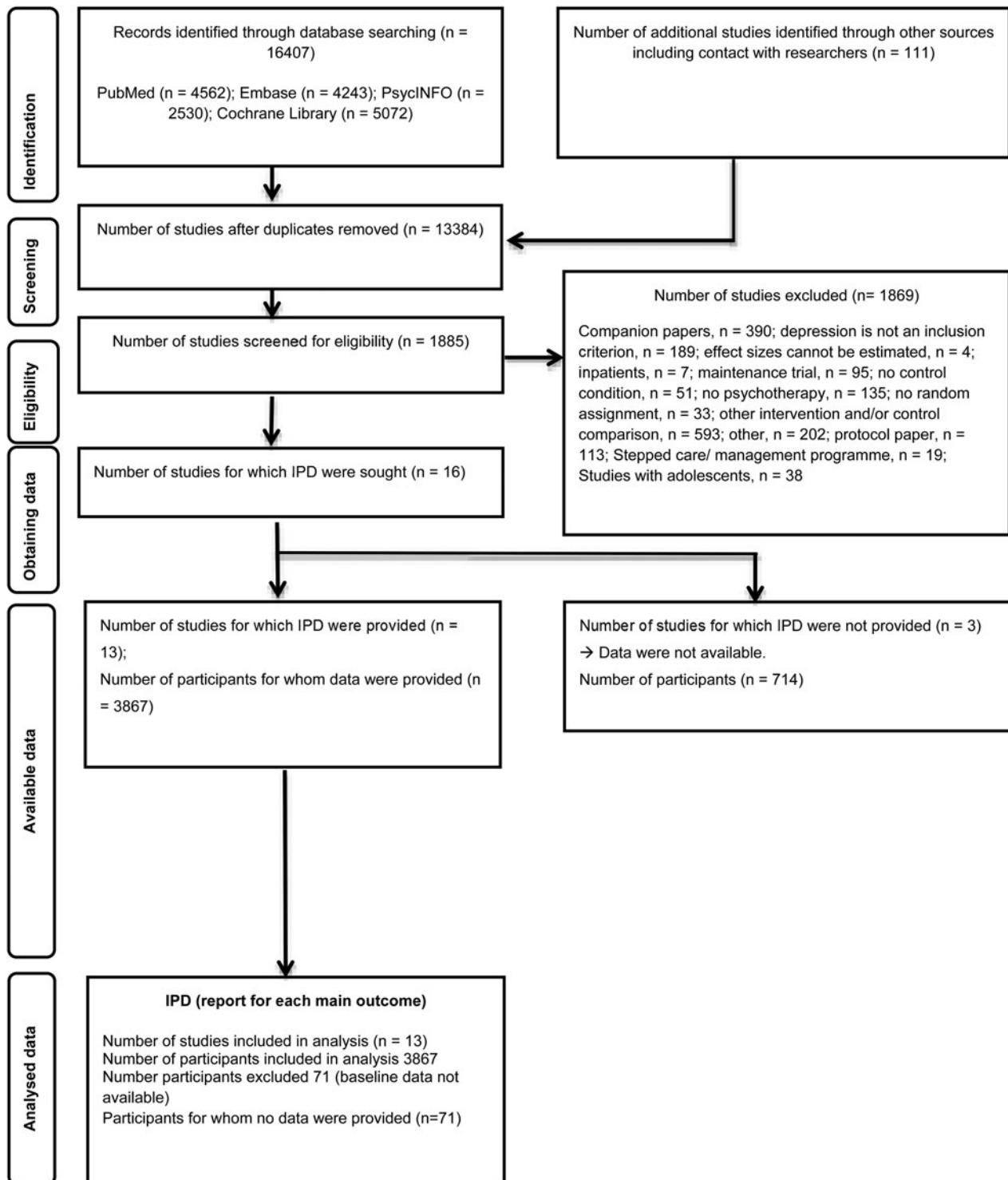


Fig. 1. PRISMA IPD diagram of studies selection process.

presented in Fig. 1. Data were available from thirteen trials including 3876 participants (Christensen *et al.* 2004; de Graaf *et al.* 2009; Berger *et al.* 2011; Farrer *et al.* 2011; Gilbody *et al.* 2015; Karyotaki *et al.* 2017 accepted, Spek *et al.* 2007; Meyer *et al.* 2009; Moritz *et al.* 2012; Phillips *et al.* 2014; Kleiboer *et al.* 2015; Meyer *et al.* 2015; Klein *et al.* 2016; Mira *et al.* 2017). Three eligible datasets were excluded from the present IPD

meta-analysis as data were unavailable (Clarke *et al.* 2002; Clarke *et al.* 2005; Clarke *et al.* 2009).

Studies and participants characteristics

Studies characteristics are presented in Table 1. Across the 13 included RCTs participants were recruited mainly within

Table 1. Characteristics of included studies

Study (year)	Inclusion criteria	Outcome measure	Intervention programme	Number of modules	Number of participants – intervention	Technical support	Control condition	Number of participants – controls	Post-treatment assessment	Country
Berger <i>et al.</i> (2011)	BDI-II > 13; major depression or dysthymia according to DSM-IV (Mini-DIPS)	BDI-II	Deprexis	11	25	No	WL	26	10 weeks	CH, DE
Christensen <i>et al.</i> (2004)	K10 ≥ 22	CES-D	Moodgym	5	182	No	AP	178	6 weeks	AU
De Graaf <i>et al.</i> (2009)	BDI-II ≥ 16;	BDI-II	Colour Your Life	9	200	No	TAU	100	8 weeks	NL
Farrer <i>et al.</i> (2011)	K10 ≥ 22	CES-D	BluePages; MoodGYM	5	83	Yes	NT	35	6 weeks	AU
Gilbody <i>et al.</i> (2015)	PHQ-9 ≥ 10	PHQ-9	Beating the Blues;	8 5	452	Yes	TAU	239	16 weeks	UK
Kleiboer <i>et al.</i> (2015)	39 ≥ CES-D ≥ 16; 15 > HADS ≥ 8	CES-D	Alles Onder Controle	5	107	No	WL	106	6 weeks	NL
Klein <i>et al.</i> (2016) ^a	5 ≥ PHQ-9 ≥ 14	PHQ-9	Deprexis	11	192	Yes	TAU	187	12 weeks	DE
Meyer <i>et al.</i> (2009)	Completed at least half of the baseline BDI	BDI	Deprexis	11	320	No	WL	76	9 weeks	DE
Meyer <i>et al.</i> (2015)	PHQ-9 ≥ 15	PHQ-9	Deprexis	11	78	No	TAU	85	12 weeks	DE
Mira <i>et al.</i> (2017)	BDI-II < 28; experiencing at least one stressful event that produces interference.	BDI-II	Smiling is Fun	8	80	Yes	WL	44	12 weeks	ES
Moritz <i>et al.</i> (2012)	Minimal to severe depression: BDI > 0	BDI	Deprexis	11	105	No	WL	105	8 weeks	DE
Phillips <i>et al.</i> (2014)	PHQ-9 ≥ 2 on five of the nine items, including ≥ 2 on item 1 or item 2.	PHQ-9	MoodGYM	5	318	No	AP	319	6 weeks	UK
Spek <i>et al.</i> (2007)	EDS ≥ 12; no compliance with the DSM-IV diagnostic criteria of depression (WHO CIDI)	BDI-II	Colour Your Life	10	67	No	WL	58	10 weeks	NL

AP, Attention Placebo; BDI, Beck Depression Inventory; CBT, Cognitive Behavioural Therapy; CES-D, Centre of Epidemiological Studies for Depression Scale; EDS, Edinburgh Depression Scale; HADS, Hospital Anxiety and Depression Scale; IPT, Interpersonal Psychotherapy; K10, Kessler 10 Psychological Distress Scale; Mini DIPS, Mini Diagnostic Interview for Psychiatric Disorders; *n*, number; NT, no treatment; PHQ-9, Patient Health Questionnaire; PST, Problem Solving Therapy; TAU, treatment as usual; WL: waiting list; WHO CIDI, World Health Organization Composite International Diagnostic Interview.

^aKlein *et al.* 2016 trial provided therapeutic support to participants with moderate depression (PHQ-9 > 9). Participants with mild depressive symptoms received no support throughout the trial. Klein *et al.* 2016 stratified participants based on depression severity during randomisation. Therefore, we decided to exclude all participants who received therapeutic support (PHQ-9 > 9; *n* = 634) from the present IPD meta-analysis.

Table 2. Sociodemographic and clinical characteristics of study participants

Patient characteristics (<i>n</i> = 3847)	Intervention group (<i>n</i> = 2244)	Control group (<i>n</i> = 1603)
Gender female, <i>n</i> (%)	1507/2244 (67.4)	1024/1603 (64.2)
Age in years (mean ± s.d.)	41.37 ± 12.27	42.49 ± 11.99
In a relationship, <i>n</i> (%)	1239/2124 (58.3)	881/1489 (59.2)
Employed, <i>n</i> (%)	1306/1862 (70.1)	927/1255 (73.9)
Education level, <i>n</i> (%)	Low	154/1593 (9.7)
	Middle	869/1593 (54.6)
	High	570/1593 (35.8)
Pre-treatment depression scores (mean ± s.d.)	BDI-II	27.60 ± 13.5
	CES-D	26.21 ± 10.8
	PHQ-9	14.44 ± 5.4
Post-treatment depression scores (mean ± s.d.)	BDI-II	20.36 ± 14.4
	CES-D	18.6 ± 11.2
	PHQ-9	9.19 ± 6.0
Comorbid anxiety disorder, <i>n</i> (%)	425/972 (43.7)	336/789 (42.6)

communities. The studies were conducted in six countries (Australia, Germany, Spain, Switzerland, the Netherlands and the UK). The included RCTs examined the effects of self-guided iCBT over control conditions (attention placebo, no treatment, treatment as usual or waiting list). The interventions consisted of five to 11 online self-guided modules. The majority of the trials provided fully self-guided iCBT while four studies provided technical support related to technical aspects of the web-platform.

Patient characteristics of the intervention and control groups are presented in Table 2. There were no significant between-group differences in gender, age, relationship status, employment, education level, comorbid anxiety or pre-treatment scores on depression measures. Two-thirds of the participants were female (*n* = 2531/3832, 66%), and the mean age was 42 years (s.d. = 11.7). Most of the participants were employed (*n* = 2233/3146, 71%) and had a high school degree or further education (*n* = 2314/2574, 90%). Participants had mean baseline scores of BDI-II = 28.3 (s.d. = 14.4), CES-D = 25.7 (s.d. = 10.8) and PHQ-9 = 14.2 (s.d. = 5.4). A small number of individual cases (*n* = 71) did not start the treatment or did not have baseline data, leaving a total of *n* = 3805. Finally, 997 participants dropped out from the included RCTs and did not provide post-treatment scores of depressive symptoms (26% of the total sample). More specifically, 630/2220 (28.4%) and 347/1585 (22%) participants dropped out of the intervention and controls, respectively. The intervention had significantly higher study dropout rates compared with controls (OR 1.51, 95% CI 1.11–2.08; *p* = 0.01).

Assessment of risk of bias

The overall risk of bias was low across the included RCTs. Random sequence was adequately generated and allocation was concealed in all included studies. Blinding of participants and personnel is not possible in psychotherapy research due to the nature of the treatment. The included RCTs used self-report outcome measure, thus blinding of outcome assessment is not applicable. As an

attempt to minimise attrition bias, we multiply imputed the missing data in the present IPD. Finally, there was no indication of selective reporting and other sources of bias. For a justification of risk of bias assessment for this study, the reader is referred to our previous publication (Karyotaki *et al.* 2017).

Prevalence of clinically significant deterioration

Overall, 7.2% (276/3805) of participants met criteria for clinically significant deterioration, while 30.1% (1143/3805) showed deterioration of any size. Divided by treatment group, 5.8% of participants who followed self-guided iCBT and 9.1% of participants in control groups showed clinically significant deterioration. Similarly, 26.2% of participants in self-guided iCBT and 35.3% of participants in control groups experienced any deterioration. Complete case analysis showed that 6.1 and 9.1% of participants showed clinically significant deterioration in self-guided iCBT and control groups, respectively. Any deterioration rates were 26.5% for self-guided iCBT and 36.6% for the control groups.

One-stage IPD: deterioration rates

The outcomes of one-stage IPD meta-analysis on deterioration rates are summarised in Table 3. Self-guided iCBT resulted in significantly lower clinically significant deterioration (OR 0.62; 95% CI 0.46–0.83, *p* < 0.001) compared with controls at post-treatment assessment (6–16 weeks post-randomisation). Sensitivity analysis on any deterioration rates and complete case analyses yielded similar outcomes, suggesting that these findings are robust. No significant associations were found between participant characteristics (age, gender, educational level, relationship status, employment status, comorbid anxiety and baseline severity of depression) or for deterioration rates in both full sample and complete case analyses. Finally, treatment adherence was not significantly associated with clinically significant ($\beta = -0.01$; s.e. = 0.37, *p* = 0.97) or any deterioration ($\beta = -0.10$; s.e. = 0.19, *p* = 0.59) within the intervention group.

Table 3. Relative odds of deterioration under self-guided iCBT v. controls in one-stage IPD analysis

Variable	'Clinically significant deterioration'						'Any deterioration'					
	Full sample			Complete cases ^a			Full sample			Complete cases ^a		
	<i>N</i> _{obs} (<i>N</i> _{st})	OR (95% CI)	<i>p</i>	<i>N</i> _{obs} (<i>N</i> _{st})	OR (95% CI)	<i>p</i>	<i>N</i> _{obs} (<i>N</i> _{st})	OR (95% CI)	<i>p</i>	<i>N</i> _{obs} (<i>N</i> _{st})	OR (95% CI)	<i>p</i>
Main effects – deterioration												
Treatment group	3795 (13)	0.62 (0.46–0.83)	0.001	2818 (13)	0.61 (0.46–0.83)	0.001	3795 (13)	0.65 (0.55–0.76)	<0.001	2818 (13)	0.66 (0.56–0.77)	<0.001
Age												
Treatment group	3786 (13)	0.36 (0.13–1.00)	0.05	2809 (13)	3.22 (1.10–9.47)	0.04	3786 (13)	0.66 (0.36–1.18)	0.16	2809 (13)	0.68 (0.38–1.22)	0.20
Age × Treatment group		1.01(0.99–1.03)	0.27		1.02 (1.00–1.04)	0.19		1.00 (0.98–1.02)	0.96		1.00 (0.98–1.02)	0.93
Gender												
Treatment group	3788 (13)	0.61(0.43–.87)	0.008	2811 (13)	0.61 (0.42–.88)	0.008	3788 (13)	0.61 (0.50–0.74)	<0.001	2811 (13)	0.61 (0.50–0.74)	<0.001
Gender × Treatment group		1.02 (0.58–1.80)	0.96		1.05 (0.58–1.89)	0.87		1.20 (0.86–1.67)	0.28		1.27 (0.89–1.81)	0.18
Educational level												
Treatment group	2538 (10)	0.57 (0.23–1.44)	0.23	1973 (10)	0.59 (0.23–1.52)	0.28	2538 (10)	0.46 (0.26–0.83)	0.01	1973 (10)	0.46 (0.25–0.84)	0.01
Educational level × Treatment group												
Secondary v. primary education		1.48 (0.51–4.26)	0.48		0.65 (0.22–1.91)	0.43		1.57 (0.82–2.99)	0.18		1.67 (0.86–3.24)	0.14
Tertiary v. primary education		0.99 (0.34–2.91)	0.98		0.90 (0.30–2.71)	0.86		1.27 (0.65–2.48)	0.47		1.25 (0.63–2.47)	0.53
Relationship status												
Treatment group	3568 (12)	0.58 (0.37–0.91)	0.02	2630 (12)	0.59 (0.38–0.92)	0.02	3568 (12)	0.61 (0.48–0.80)	<0.001	2630 (12)	0.63 (0.48–0.81)	<0.001
Relationship status × Treatment group		1.15 (0.64–2.07)	0.63		1.12 (0.78–1.59)	0.71		1.02 (0.75–1.40)	0.88		1.01 (0.71–1.44)	0.96
Employment status												
Treatment group	3067 (10)	0.66 (0.40–1.09)	0.11	2194 (10)	0.70 (0.41–1.18)	0.18	3067 (10)	0.55 (0.40–0.77)	<0.001	2194 (10)	0.57 (0.40–0.80)	0.001
Employment status × Treatment group		0.97 (0.14–6.50)	0.92		0.92 (0.48–1.76)	0.82		1.22 (0.83–1.81)	0.32		1.21 (0.80–1.83)	0.36
Comorbid anxiety												
Treatment group	1728 (9)	0.58 (0.37–0.91)	0.02	1447 (9)	0.85 (0.37–0.91)	0.02	1728 (9)	0.58 (0.43–0.77)	<0.001	1447 (9)	0.57 (0.42–.76)	<0.001
Comorbid anxiety × Treatment group		1.13 (0.57–2.26)	0.72		1.22 (0.60–2.47)	0.57		1.04 (0.68–1.60)	0.85		1.12 (0.71–1.75)	0.64
Baseline severity of depression												
Treatment group	3795 (13)	0.61 (0.44–0.85)	0.003	2818 (13)	0.61 (0.44–0.85)	0.003	3795 (13)	0.65 (0.54–0.77)	<0.001	2818 (13)	0.66 (0.56–.79)	<0.001
Baseline severity × Treatment group		0.99 (0.74–1.33)	0.92		0.99 (0.72–1.35)	0.93		1.06 (0.91–1.24)	0.46		1.11 (0.94–1.29)	0.21

*N*_{obs}, Number of observations; *N*_{st}, number of studies; OR, odds ratio; s.e., standard error

^aThis is a sensitivity analysis that was conducted including only participants who completed post-treatment depression questionnaires

Table 4. Relative odds of deterioration of self-guided iCBT v. controls in adults with depressive symptoms, two-stage IPD

Outcomes	'Reliable deterioration'					'Any deterioration'				
	<i>N</i>	OR (95% CI) ^a	<i>I</i> ² (%)	95% CI	<i>p</i> ^b	<i>N</i>	OR (95% CI) ^a	<i>I</i> ² (%)	95% CI	<i>p</i> ^b
Full sample	13	0.62 (0.48–0.81)	0	0–57%	0.000	13	0.63 (0.51–0.77)	41	0–69%	0.000
Subgroups										
Type of control										
TAU v.	4	0.76 (0.51–1.13)	15	0–85%	0.16	4	0.68 (0.45–1.03)	63	0–88%	0.62
Other	9	0.51 (0.35–0.75)	0	0–65%		9	0.60 (0.47–0.76)	31	0–68%	
Recruitment										
Community	7	0.47 (0.30–0.74)	0	0–71%	0.29	7	0.56 (0.41–0.75)	36	0–73%	0.39
Community and/or primary care	4	0.76 (0.51–1.13)	15	0–85%		4	0.68 (0.45–1.03)	63	0–88%	
Other	2	0.64 (0.32–1.30)	0	N/A		2	0.75 (0.54–1.03)	0	N/A	
Support										
Pure self-guided iCBT	9	0.61 (0.45–0.83)	0	0–65%	0.82	9	0.59 (0.46–0.77)	48	0–76%	0.34
Technically supported iCBT	4	0.66 (0.39–1.13)	0	0–85%		4	0.72 (0.53–0.96)	16	0–87%	
Complete case	13	0.61 (0.45–0.83)	0	0–57%	0.000	13	0.61 (0.48–0.79)	50	5–74%	0.000
Subgroups										
Type of control										
TAU v.	4	0.85 (0.501–1.44)	36	0–78%	0.06	4	0.69 (0.40–1.19)	74	26–91%	0.56
Other	9	0.43 (0.27–0.70)	0	0–65%		9	0.59 (0.44–0.76)	31	0–68%	
Recruitment										
Community	7	0.40 (0.23–0.70)	0	0–71%	0.16	7	0.54 (0.37–0.79)	47	0–77%	0.69
Community and/or primary care	4	0.85 (0.50–1.44)	36	0–78%		4	0.69 (0.40–1.19)	74	26–91%	
Other	2	0.56 (0.19–1.59)	0	N/A		2	0.67 (0.44–1.01)	0	N/A	
Support										
Pure self-guided iCBT	9	0.60 (0.43–0.85)	0	0–65%	0.85	9	0.57 (0.41–0.78)	53	0–78%	0.34
Technically supported iCBT	4	0.65 (0.34–1.23)	3	0–85%		4	0.73 (0.49–0.80)	40	0–80%	

*I*², heterogeneity index; *N*, number of studies; N/A, not applicable; OR, odds ratio.

^a95% CI 95% confidence intervals; *p*, *p*-value.

^b*p* value between groups.

Two-stage IPD deterioration rates

Results of the two-stage IPD meta-analysis replicated the findings of one-stage IPD on clinically significant deterioration (OR 0.62; 95% CI 0.48–0.81, $p < 0.001$). Heterogeneity was zero. These results were replicated in sensitivity analysis on any deterioration rates showed similar outcomes and complete case analyses. There was no indication for publication bias across all the analyses. Finally, the examined study-level variables were not significantly associated with clinically significant and any deterioration. Results of the two-stage IPD are presented in Table 4 in the online supplement.

Discussion

The present IPD meta-analysis aimed to examine the clinically significant symptom deterioration rates of self-guided iCBT compared with controls and to evaluate the moderating effects of deterioration. Of the 3805 participants included in the analysis, 7.2% showed clinically significant deterioration. Self-guided iCBT had low clinically significant deterioration rates (5.8%) and resulted in lower risk of clinically significant deterioration compared with controls at the post-treatment assessment. Similar results were observed in sensitivity analyses. None of the examined participant- and study-level variables moderated clinically significant deterioration.

This is the first meta-analysis to have systematically examined deterioration rates in self-guided iCBT for adults with depressive symptoms. The finding that self-guided iCBT shows lower deterioration rates compared with controls is consistent with previous IPD meta-analysis of 2079 participants on guided internet based interventions (Ebert *et al.* 2016). According to this work, guided web-based interventions resulted in lower risk of clinically significant deterioration compared with controls. Furthermore, guided internet-based interventions showed 3.6% clinically significant deterioration, which is slightly lower but comparable with the present clinically significant deterioration rates of self-guided iCBT (5.8%) (Ebert *et al.* 2016). The deterioration rates found in the present IPD meta-analysis are in line with the deterioration rates observed in face-to-face treatment (5–10%) (Rozental *et al.* 2014) and considerably lower compared with the 12% rate of deterioration reported by a recent meta-analysis examining change under treatment as usual (Kolovos *et al.* 2017).

The present study has several notable strengths; we were able to obtain IPD from 3876 participants from the majority (81%) of the eligible trials. This large number of participants offered us adequate power to detect statistically significant differences between self-guided iCBT and controls on symptom deterioration rates and to examine moderators of clinically significant deterioration. In addition, the current sample of studies appears to be free from critical bias, since the included trials had high methodological quality. Other strengths of the current work are that heterogeneity between studies was small to moderate and there was no indication of publication bias.

Nevertheless, the current findings should be interpreted with caution due to a number of limitations. The present sample of studies is at (relatively low) risk of availability bias since three eligible studies were not available for inclusion. The published reports of these unavailable trials did not include deterioration rates. Thus, traditional meta-analysis of direct comparison between available and unavailable studies was not possible. However, results of a previous analysis showed no difference between the effectiveness of the available and unavailable studies,

indicating that the present sample is representative (Karyotaki *et al.* 2017). Moreover, the intervention had significantly higher study dropout rates compared with control conditions. It has been suggested that study dropout could be either related to symptom deterioration or improvement (Rozental *et al.* 2014). On the other hand, higher study adherence rates in controls, such as waiting list, may be associated to the expectation that participants will eventually receive treatment. Unfortunately, it was not possible to examine reasons for study dropout as this information is largely missing from the included studies. In light of this limitation, it should be noted that in the present analysis missing outcome data were multiply imputed based on missing at random assumption. The missing at random assumption underlying multiple imputation is critical as it assumes that those participants for whom post-treatment data were imputed behaved similarly to those with post-treatment data with comparable profiles. Therefore, if individuals dropped out due to deterioration (missing not at random), this would not be captured and a conservative estimate of deterioration is likely. Nevertheless, we performed a complete case analysis to test the robustness of our main full sample analysis and we found no differences between the full sample and complete cases in deterioration rates. Another limitation is that we could not examine several variables that might influence deterioration, such as previous episodes of depression and symptom duration. Individuals who have experienced several episodes of depression in the past and those who have chronic symptoms might be at greater risk of deterioration. Moreover, the majority of the trials included recruited their participants through the community. Thus, the current findings cannot be generalised to patients treated in clinical settings since active care seekers may differ from individuals responding to advertisements.

From a clinical point of view, the present study has important implications. Although many patients prefer psychotherapy to antidepressants (van Schaik *et al.* 2004), pharmacotherapy dominates primary and secondary mental healthcare while psychotherapy is offered to a lesser degree. Self-guided iCBT has the potential to increase the availability and accessibility of psychotherapy and minimise the costs. However, the implementation of self-guided iCBT in clinical practice is hampered by barriers, such as concerns regarding its safety and effectiveness. The present study has demonstrated that self-guided iCBT results in lower risk for symptom deterioration compared with controls (including regular care services) and our previous study showed that is effective in treating depressive symptoms. This suggests that self-guided iCBT could be an alternative to watchful waiting in general practice and it can be disseminated at a large scale in countries where resources of mental healthcare are limited or inaccessible due to other reasons.

Symptom deterioration occurs in self-guided iCBT and study dropout is higher compared with controls; thus, future studies should carefully examine and report deterioration rates and reasons for study dropout. Future research on self-guided iCBT interventions should examine deterioration rates over longer time periods. Moreover, moderators, such as duration of symptoms and previous episodes, should be addressed by future studies to indicate for whom self-guided iCBT might be harmful. More studies from primary care are needed to replicate the current findings with clinical samples.

Supplementary material. The supplementary material for this article can be found at <https://doi.org/10.1017/S0033291718000648>

Acknowledgements. This work was funded by the European Commission's Seventh Framework Program (grant 603098 for the E-COMPARED project). At the time of the study, Dr K. Griffiths was supported by National Health & Medical Research Counselling Fellowship 1059620.

Declaration of interest. Dr Klein reported receiving funding for clinical trials (German Federal Ministry of Health, Servier), payments for presentations on internet interventions (Servier), and payments for workshops and books (Beltz, Elsevier and Hogrefe) on psychotherapy for chronic depression and psychiatric emergencies. No other disclosures were reported.

References

- Andersson G and Titov N (2014) Advantages and limitations of internet-based interventions for common mental disorders. *World Psychiatry* **13**, 4–11.
- Beck A, Steer R and Brown G (1996) *BDI-II, Beck Depression Inventory: Manual*. San Antonio, TX: Psychological Corporation.
- Beck AT, Ward C and Mendelson M (1961) Beck depression inventory (BDI). *Archives of General Psychiatry* **4**, 561–571.
- Berger T, Hammerli K, Gubser N, Andersson G and Caspar F (2011) Internet-based treatment of depression: a randomized controlled trial comparing guided with unguided self-help. *Cognitive Behavioral Therapy* **40**, 251–266.
- Bower P, Kontopantelis E, Sutton A, Kendrick T, Richards DA, Gilbody S *et al.* (2013) Influence of initial severity of depression on effectiveness of low intensity interventions: meta-analysis of individual patient data. *The British Medical Journal* **346**, f540.
- Burke DL, Ensor J and Riley RD (2016) Meta-analysis using individual participant data: one-stage and two-stage approaches, and why they may differ. *Statistics in Medicine* **36**(5), 855–875.
- Christensen H, Griffiths KM and Jorm AF (2004) Delivering interventions for depression by using the internet: randomised controlled trial. *The British Medical Journal* **328**, 265.
- Clarke G, Eubanks D, Reid CK, O'Connor E, DeBar LL, Lynch F *et al.* (2005) Overcoming depression on the internet (ODIN)(2): a randomized trial of a self-help depression skills program with reminders. *Journal of Medical Internet Research* **7**(2), e16.
- Clarke G, Kelleher C, Hornbrook M, DeBar L, Dickerson J and Gullion C (2009) Randomized effectiveness trial of an internet, pure self-help, cognitive behavioral intervention for depressive symptoms in young adults. *Cognitive Behavioral Therapy* **38**, 222–234.
- Clarke G, Reid E, Eubanks D, O'Connor E, DeBar LL, Kelleher C *et al.* (2002) Overcoming depression on the internet (ODIN): a randomized controlled trial of an internet depression skills intervention program. *Journal of Medical Internet Research* **4**, e14.
- Cohen J (1988) *Statistical Power Analysis for the Behavioral Sciences*. 2nd ed. Hillsdale, NJ: Lawrence. Erlbaum Associates.
- Cuijpers P, van Straten A, Warmerdam L and Andersson G (2008) Psychological treatment of depression: a meta-analytic database of randomized studies. *BMC Psychiatry* **8**, 1–6.
- Debray TP, Moons KG, Abo-Zaid GMA, Koffijberg H and Riley RD (2013) Individual participant data meta-analysis for a binary outcome: one-stage or two-stage? *PLoS ONE* **8**, e60650.
- Deeks JJ, Higgins J and Altman DG (2008) Analysing data and undertaking meta-analyses. In Higgins JP and Green S (eds). *Cochrane Handbook for Systematic Reviews of Interventions: Cochrane Book Series*. Cochrane Book Series. Chichester, UK: John Wiley & Sons, Ltd, pp. 243–296.
- de Graaf LE, Gerhards S, Arntz A, Riper H, Metsemakers J, Evers S *et al.* (2009) Clinical effectiveness of online computerised cognitive-behavioural therapy without support for depression in primary care: randomised trial. *The British Journal of Psychiatry* **195**, 73–80.
- Dimidjian S and Hollon SD (2010) How would we know if psychotherapy were harmful? *American Psychologist* **65**, 21.
- Duval S and Tweedie R (2000) Trim and fill: a simple funnel-plot-based method of testing and adjusting for publication bias in meta-analysis. *Biometrics* **56**, 455–463.
- Ebert DD, Donkin L, Andersson G, Andrews G, Berger T, Carlbring P *et al.* (2016) Does internet-based guided-self-help for depression cause harm? An individual participant data meta-analysis on deterioration rates and its moderators in randomized controlled trials. *Psychological Medicine* **46**, 2679–2693.
- Enger M, Smith GD, Schneider M and Minder C (1997) Bias in meta-analysis detected by a simple, graphical test. *British Medical Journal* **315**, 629–634.
- Evangelou E, Ioannidis JP and Patsopoulos NA (2007) Uncertainty in heterogeneity estimates in meta-analyses. *The British Medical Journal* **335**, 914–916.
- Farrer L, Christensen H, Griffiths KM and Mackinnon A (2011) Internet-based CBT for depression with and without telephone tracking in a national helpline: randomised controlled trial. *PLoS ONE* **6**, e28099.
- Foa EB, Hembree EA, Cahill SP, Rauch SA, Riggs DS, Feeny NC *et al.* (2005) Randomized trial of prolonged exposure for posttraumatic stress disorder with and without cognitive restructuring: outcome at academic and community clinics. *Journal of Consulting and Clinical Psychology* **73**, 953.
- Gilbody S, Littlewood E, Hewitt C, Brierley G, Tharmanathan P, Araya R *et al.* (2015) Computerised cognitive behaviour therapy (cCBT) as treatment for depression in primary care (REEACT trial): large scale pragmatic randomised controlled trial. *The British Medical Journal* **351**, h5627.
- Hedman E, Ljótsson B and Lindfors N (2012) Cognitive behavior therapy via the internet: a systematic review of applications, clinical efficacy and cost-effectiveness. *Expert Review of Pharmacoeconomics & Outcomes Research* **12**, 745–764.
- Higgins J and Altman DG (2008) Assessing risk of bias in included studies In Higgins JP and Green S (eds). *Cochrane Handbook for Systematic Reviews of Interventions: Cochrane Book Series*. Chichester, UK: John Wiley & Sons, Ltd, pp. 187–241.
- Higgins J and Green S (2011) *Handbook for Systematic Reviews of Interventions*. version 5.1.0 [updated March 2011]. Chichester, UK: John Wiley & Sons, Ltd.
- Jacobson NS and Truax P (1991) Clinical significance: a statistical approach to defining meaningful change in psychotherapy research. *Journal of Consulting and Clinical Psychology* **59**, 12.
- Jonsson U, Alaia I, Parling T and Arnberg FK (2014) Reporting of harms in randomized controlled trials of psychological interventions for mental and behavioral disorders: a review of current practice. *Contemporary Clinical Trials* **38**, 1–8.
- Kalenthaler E., Brazier J., De Nigris E., Tumur I., Ferriter M., Beverley C. *et al.* (2006). Computerised cognitive behaviour therapy for depression and anxiety update: a systematic review and economic evaluation. *Health Technology Assessment* **10**, iii, xi-xiv, 1–168.
- Karyotaki E, Riper H, Twisk J, Hoogendoorn A, Kleiboer A, Mira A *et al.* (2017) Efficacy of self-guided internet-based cognitive behavioral therapy in the treatment of depressive symptoms: a meta-analysis of individual participant data. *JAMA Psychiatry* **74**(4), 351–359.
- Kleiboer A, Donker T, Seekles W, van Straten A, Riper H and Cuijpers P (2015) A randomized controlled trial on the role of support in internet-based problem solving therapy for depression and anxiety. *Behavioral Research Therapy* **72**, 63–71.
- Klein JP, Berger T, Schröder J, Späth C, Meyer B, Caspar F, Lutz W *et al.* (2016) Effects of a psychological internet intervention in the treatment of mild to moderate depressive symptoms: results of the EVIDENT study, a randomised controlled trial. *Psychotherapy Psychosomatics* **85**(4), 218–228.
- Kolovos S, van Tulder MW, Cuijpers P, Prigent A, Chevreur K, Riper H *et al.* (2017) The effect of treatment as usual on major depressive disorder: a meta-analysis. *Journal of Affective Disorders* **210**, 72–81.
- Kroenke K, Spitzer RL and Williams JB (2001) The Phq-9. *Journal of General Internal Medicine* **16**, 606–613.
- Lambert MJ, Bergin A and Garfield S (1993) *Handbook of Psychotherapy and Behavior Change*. New York: John Wiley & Sons. Kendall, P. C., & Chambless, D. L. (Eds).
- Lepine JP and Briley M (2011) The increasing burden of depression. *Neuropsychiatric Disease and Treatment* **7**, 3–7.
- Meyer B, Berger T, Caspar F, Beevers CG, Andersson G and Weiss M (2009) Effectiveness of a novel integrative online treatment for depression (Deprexis): randomized controlled trial. *Journal of Medical Internet Research* **11**, e15.

- Meyer B, Bierbrodt J, Schröder J, Berger T, Beevers CG, Weiss M *et al.*** (2015) Effects of an internet intervention (Deprexis) on severe depression symptoms: randomized controlled trial. *Internet Interventions* **2**, 48–59.
- Mira A, Bretón-López J, García-Palacios A, Quero S, Baños RM and Botella C** (2017) An internet-based program for depressive symptoms using human and automated support: a randomized control trial. *Neuropsychiatric Disease and Treatment* **13**, 987–1006.
- Mohr DC, Beutler LE, Engle D, Shoham-Salomon V, Bergan J, Kaszniak AW *et al.*** (1990) Identification of patients at risk for nonresponse and negative outcome in psychotherapy. *Journal of Consulting and Clinical Psychology* **58**, 622.
- Moritz S, Schilling L, Hauschildt M, Schroder J and Treszl A** (2012) A randomized controlled trial of internet-based therapy in depression. *Behavioral Research Therapy* **50**, 513–521.
- Muñoz RF, Bunge EL, Chen K, Schueller SM, Bravin JI, Shaughnessy EA *et al.*** (2015) Massive open online interventions a novel model for delivering behavioral-health services worldwide. *Clinical Psychological Science* **4**(2), 194–205.
- Newman MG** (2000) Recommendations for a cost-offset model of psychotherapy allocation using generalized anxiety disorder as an example. *Journal of Consulting and Clinical Psychology* **68**, 549.
- Newman MG, Erickson T, Przeworski A and Dzus E** (2003) Self-help and minimal-contact therapies for anxiety disorders: is human contact necessary for therapeutic efficacy? *Journal of Clinical Psychology* **59**, 251–274.
- Orsini N, Bottai M, Higgins J and Buchan I** (2006) Heterogi: Stata module to quantify heterogeneity in a meta-analysis. *Statistical Software Components* Available at <https://econpapers.repec.org/software/bocbocode/s449201.htm>.
- Phillips R, Schneider J, Molosankwe I, Leese M, Foroushani PS, Grime P *et al.*** (2014) Randomized controlled trial of computerized cognitive behavioural therapy for depressive symptoms: effectiveness and costs of a workplace intervention. *Psychological Medicine* **44**, 741–752.
- Radloff LS** (1977) The CES-D scale a self-report depression scale for research in the general population. *Applied Psychological Measurement* **1**, 385–401.
- Reddy M** (2010) Depression: the disorder and the burden. *Indian Journal of Psychological Medicine* **32**, 1.
- Robinson TN, Patrick K, Eng TR and Gustafson D** (1998) An evidence-based approach to interactive health communication: a challenge to medicine in the information age. *JAMA* **280**, 1264–1269.
- Rozental A, Andersson G, Boettcher J, Ebert DD, Cuijpers P, Knaevelsrud C *et al.*** (2014) Consensus statement on defining and measuring negative effects of internet interventions. *Internet Interventions* **1**, 12–19.
- Rubin DB** (2004) *Multiple Imputation for Nonresponse in Surveys*. New York: John Wiley & Sons.
- Spek V, Nyklíček I, Smits N, Cuijpers P, Riper H, Keyzer J *et al.*** (2007) Internet-based cognitive behavioural therapy for subthreshold depression in people over 50 years old: a randomized controlled clinical trial. *Psychological Medicine* **37**, 1797–1806.
- Stewart L and Parmar M** (1993) Meta-analysis of the literature or of individual patient data: is there a difference? *The Lancet* **341**, 418–422.
- van Schaik DJ, Klijn AF, van Hout HP, van Marwijk HW, Beekman AT, de Haan M *et al.*** (2004) Patients' preferences in the treatment of depressive disorder in primary care. *General Hospital Psychiatry* **26**, 184–189.
- Vaughan B, Goldstein MH, Alikakos M, Cohen LJ and Serby MJ** (2014) Frequency of reporting of adverse events in randomized controlled trials of psychotherapy vs. psychopharmacotherapy. *Comprehensive Psychiatry* **55**, 849–855.
- Waller R and Gilbody S** (2009) Barriers to the uptake of computerized cognitive behavioural therapy: a systematic review of the quantitative and qualitative evidence. *Psychological Medicine* **39**, 705–712.
- Ybarra ML and Eaton WW** (2005) Internet-based mental health interventions. *Mental Health Services Research* **7**, 75–87.