



Título artículo / Títol article: Lattice paths with given number of turns and semimodules over numerical semigroups

Autores / Autors Moyano Fernández, Julio José ; Uliczka, Jan

Revista: Semigroup Forum June 2014, Volume 88, Issue 3

Versión / Versió: Postprint de l'autor

Cita bibliográfica / Cita bibliogràfica (ISO 690): MOYANO-FERNÁNDEZ, Julio José; ULICZKA, Jan. Lattice paths with given number of turns and semimodules over numerical semigroups. Semigroup Forum, 2014. Volume 88, Issue 3, p. 631-646.

url Repositori UJI: <http://hdl.handle.net/10234/124885>

LATTICE PATHS WITH GIVEN NUMBER OF TURNS AND SEMIMODULES OVER NUMERICAL SEMIGROUPS

JULIO JOSÉ MOYANO-FERNÁNDEZ AND JAN ULICZKA

ABSTRACT. Let $\Gamma = \langle \alpha, \beta \rangle$ be a numerical semigroup. In this article we consider several relations between the so-called Γ -semimodules and lattice paths from $(0, \alpha)$ to $(\beta, 0)$: we investigate isomorphism classes of Γ -semimodules as well as certain subsets of the set of gaps of Γ , and finally syzygies of Γ -semimodules. In particular we compute the number of Γ -semimodules which are isomorphic with their k -th syzygy for some k .

1. INTRODUCTION

In our paper [4] we considered Hilbert series of graded modules over the polynomial ring $R = \mathbb{F}[X, Y]$ with $\deg(X)$ and $\deg(Y)$ being coprime. The central result was an arithmetic criterion for such a series to be the Hilbert series of some finitely generated R -module of positive depth. This criterion is formulated in terms of the numerical semigroup generated by $\deg(X)$ and $\deg(Y)$. For reader's convenience we recall some basic vocabulary of this theory here.

Let Γ be a sub-semigroup of \mathbb{N} such that the greatest common divisor of all its elements is equal to 1. Then the set $\mathbb{N} \setminus \Gamma$ has only finitely many elements, which are called the *gaps* of Γ . Such a semigroup is said to be *numerical*. The crucial notion in [4] was that of a *fundamental couple*: Let $\alpha, \beta > 0$ be coprime integers and let G denote the set of gaps of $\langle \alpha, \beta \rangle$. An (α, β) -*fundamental couple* $[I, J]$ consists of two integer sequences $I = (i_k)_{k=0}^m$ and $J = (j_k)_{k=0}^m$, such that

$$(0) \quad i_0 = 0.$$

$$(1) \quad i_1, \dots, i_m, j_1, \dots, j_{m-1} \in G \text{ and } j_0, j_m \leq \alpha\beta.$$

$$(2) \quad \begin{array}{llll} i_k \equiv j_k & \pmod{\alpha} & \text{and} & i_k < j_k & \text{for } k = 0, \dots, m; \\ j_k \equiv i_{k+1} & \pmod{\beta} & \text{and} & j_k > i_{k+1} & \text{for } k = 0, \dots, m-1; \\ j_m \equiv i_0 & \pmod{\beta} & \text{and} & j_m \geq i_0. \end{array}$$

$$(3) \quad |i_k - i_\ell| \in G \text{ for } 1 \leq k < \ell \leq m.$$

2010 *Mathematics Subject Classification*. Primary 20M14; Secondary 05A19.

Key words and phrases. Lattice path, numerical semigroup, Γ -semimodule, fundamental couple, Γ -lean set, syzygy.

One of the problems considered in this article will be the counting of sets of integers like those appearing in the first position of a fundamental couple. We coin a name for these sets:

Definition 1.1. Let Γ be a numerical semigroup. A set $\{x_0 = 0, x_1, \dots, x_n\} \subseteq \mathbb{N}$ is called Γ -lean if $|x_i - x_j| \notin \Gamma$ for $0 \leq i < j \leq n$.

The next two sections deal with objects related to Γ -lean sets: we begin with isomorphism classes of Γ -semimodules. In section 3 we consider certain lattice paths; from this section on, Γ is restricted to be generated by two elements. In the last sections we turn our attention to the second position of a fundamental couple: we identify the sequences J appearing there with so-called syzygies of Γ -semimodules and investigate their relation with lattice paths. The process of taking syzygies can be iterated — our final result allows to compute the number of semimodules Δ whose k -th syzygy is isomorphic with Δ for some k .

2. GENERATORS OF Γ -SEMIMODULES

Let Γ be a numerical semigroup. A Γ -semimodule Δ is a non-empty subset of \mathbb{N} such that $\Delta + \Gamma \subseteq \Delta$. A system of generators of Δ is a subset \mathcal{E} of Δ with

$$\bigcup_{x \in \mathcal{E}} (x + \Gamma) = \Delta.$$

It is called minimal if no proper subset of \mathcal{E} generates Δ . Note that, since $\Delta \setminus \Gamma$ is finite, every Γ -semimodule is finitely generated.

Lemma 2.1. *Every Γ -semimodule Δ has a unique minimal system of generators.*

Proof. Inductively we construct a sequence (x_i) of elements of Δ starting with $x_1 = \min \Delta$ such that any system of generators has to contain this sequence. If x_1, \dots, x_n are already constructed but do not generate Δ we set $x_{n+1} = \min \Delta \setminus \bigcup_{i=1}^n (x_i + \Gamma)$. After finitely many steps we arrive at a system of generators x_1, \dots, x_r , and by construction it is clear that this system is minimal and that any system of generators must contain x_1, \dots, x_r . \square

Lemma 2.2. *Let x_1, \dots, x_r be the minimal system of generators of a Γ -semimodule. Then $|x_i - x_j|$ is a gap of Γ for all $i \neq j$. Conversely, any subset $\{x_1, \dots, x_r\}$ of \mathbb{N} with this property minimally generates a Γ -semimodule.*

Proof. We may assume $x_j > x_i$ for $j > i$. Then, by minimality, $x_j - x_i \notin \Gamma$ for all $j > i$. The second assertion is clear since $x_i \notin \bigcup_{j \neq i} (x_j + \Gamma)$. \square

Two Γ -semimodules Δ, Δ' are called isomorphic if there is an integer n such that $x \mapsto x + n$ is a bijection from Δ to Δ' . For every Γ -semimodule Δ there is a unique semimodule $\Delta' \cong \Delta$ containing 0; such a Γ -semimodule is called normalized.

The semimodule $\Delta^\circ := \{x - \min \Delta \mid x \in \Delta\}$ is called the normalization of Δ . It is the unique semimodule isomorphic to Δ and containing 0.

Corollary 2.3. *The minimal system of generators of a normalized Γ -semimodule is Γ -lean, and conversely, every Γ -lean set of \mathbb{N} minimally generates a normalized Γ -semimodule. Hence there is a bijection between the set of isomorphism classes of Γ -semimodules and the set of Γ -lean sets of \mathbb{N} .*

3. LATTICE PATHS AND $\langle \alpha, \beta \rangle$ -LEAN SETS

From now on we only consider numerical semigroups with two generators $\alpha < \beta$. In this case there is a connection between Γ -lean sets and certain lattice paths which allows to deduce a formula for the number of $\langle \alpha, \beta \rangle$ -lean sets.

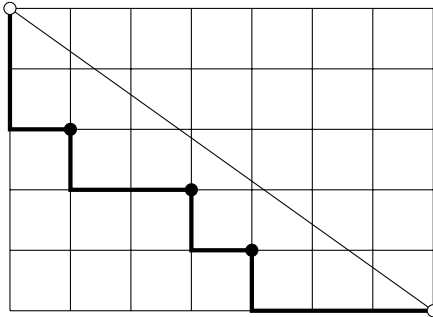
Lemma 3.1 ([7], Lemma 1, resp. [4], Corollary 3.5). *(1) Let $e \in \mathbb{Z}$. Then $e \notin \langle \alpha, \beta \rangle$ if and only if there exist $k, \ell \in \mathbb{N}_{>0}$ such that $e = \alpha\beta - k\alpha - \ell\beta$.
(2) Any integer $n > 0$ has a unique presentation $n = p\alpha\beta - a\alpha - b\beta$ with integers $p > 0, 0 \leq a < \beta$ and $0 \leq b < \alpha$.*

This result yields a map $G \rightarrow \mathbb{N}^2$, $\alpha\beta - a\alpha - b\beta \mapsto (a, b)$ which identifies a gap with a lattice point. Since $\alpha\beta - a\alpha - b\beta > 0$ the point lies inside the triangle with corners $(0, 0), (\beta, 0), (0, \alpha)$.

Lemma 3.2 ([4], Lemma 3.19). *Let $i_1 = \alpha\beta - a_1\alpha - b_1\beta, i_2 = \alpha\beta - a_2\alpha - b_2\beta$ be gaps of $\langle \alpha, \beta \rangle$. Then the difference $|i_1 - i_2|$ is a gap if and only if $(a_2 - a_1)(b_2 - b_1) < 0$.*

Corollary 3.3. *Let $\mathcal{E} := \{0, x_1, \dots, x_m\} \subseteq \mathbb{N}$ with gaps $x_i = \alpha\beta - a_i\alpha - b_i\beta$ of $\langle \alpha, \beta \rangle$, $i = 1, \dots, m$ such that $a_1 < a_2 < \dots < a_m$, then \mathcal{E} is $\langle \alpha, \beta \rangle$ -lean if and only if $b_1 > b_2 > \dots > b_m$.*

Therefore an $\langle \alpha, \beta \rangle$ -lean set yields a lattice path with steps downwards and to the right from $(0, \alpha)$ to $(\beta, 0)$ not crossing the diagonal, where the points identified with the gaps mark the turns from x -direction to y -direction. In the sequel those turns will be called ES-turns for short.



Lattice path for the $\langle 5, 7 \rangle$ -lean set $\{0, 9, 6, 8\}$.

(Note that in the first component $I = (i_k)_{k=0}^m$ of a fundamental couple the numbering of elements is that of Corollary 3.3 reversed, see [4, Corollary 3.21 a)]. Hence in the path associated to I the ES-turns are numbered from right to left. One could avoid this inversion by considering paths from $(\beta, 0)$ to $(\alpha, 0)$ or by using a different orientation of the diagram, but we prefer our version for typographical reasons.)

Conversely, for every lattice path from $(0, \alpha)$ to $(\beta, 0)$ not crossing the diagonal the points of the ES-turns can be identified with the gaps in an $\langle \alpha, \beta \rangle$ -lean set:

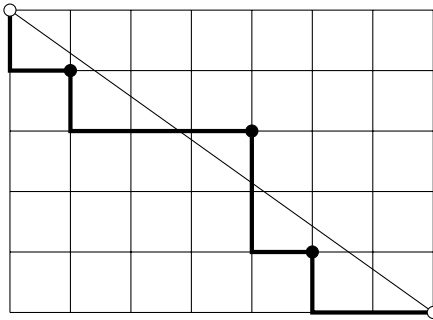
Lemma 3.4. *Let α, β be coprime positive integers. Then there is a bijection between the set of $\langle \alpha, \beta \rangle$ -lean sets and the set of lattice paths from $(0, \alpha)$ to $(\beta, 0)$ not crossing the diagonal.*

Therefore counting of $\langle \alpha, \beta \rangle$ -lean sets is equivalent to counting of such lattice paths. The latter was considered by Bizley in [2]. The main idea used there even allows to count the paths with a certain number of ES-turns.

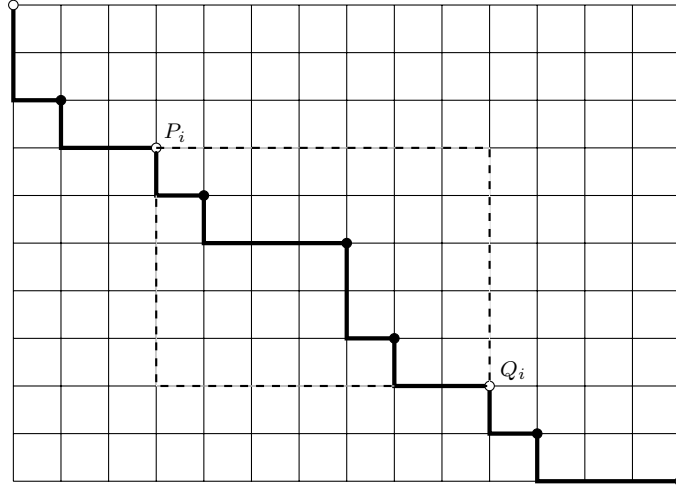
The number of all lattice paths with r ES-turns from $(0, \alpha)$ to $(\beta, 0)$ is easily computed: The r turning points have x -coordinates in the range $\{1, \dots, \beta - 1\}$ and also y -coordinates in the range $\{1, \dots, \alpha - 1\}$. Since the sequence of coordinates has to be increasing resp. decreasing there are $\binom{\beta-1}{r} \binom{\alpha-1}{r}$ lattice paths. We have to determine how many of these paths stay below the diagonal. To this end we use the concept of a cyclic permutation of a path.

A lattice path with r ES-turns can also be described by a $2 \times (r + 1)$ -matrix where the i -th column contains the numbers of steps downwards and to the right the path takes between the $(i - 1)$ -th and the i -th turning points (where the 0-th and $(r + 1)$ -th points are to be understood as $(0, \alpha)$ resp. $(\beta, 0)$). For the path in the example above we get the matrix $\begin{pmatrix} 2 & 1 & 1 & 1 \\ 1 & 2 & 1 & 3 \end{pmatrix}$.

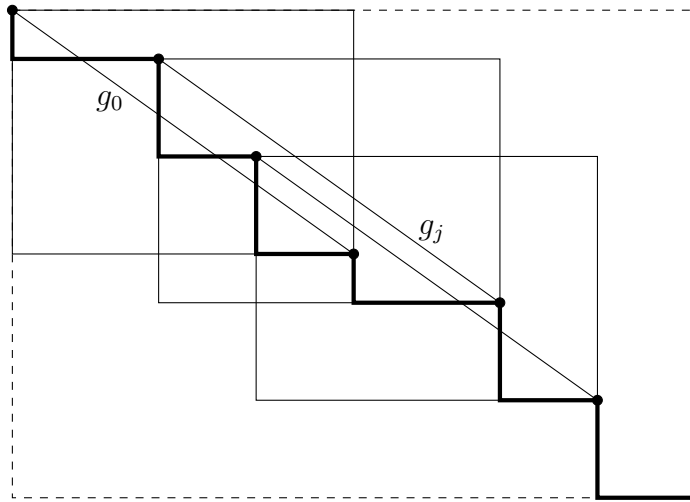
A *cyclic permutation* of the path is a path belonging to the matrix with cyclically permuted columns. The permuted matrix $\begin{pmatrix} 1 & 1 & 2 & 1 \\ 1 & 3 & 1 & 2 \end{pmatrix}$ yields the path



One can also imagine a cyclic permutation in a different way. We extend the path with turning points $P_i = (x_i, y_i)$ beyond $(\beta, 0)$ with points $Q_i = (x_i + \beta, y_i - \alpha)$, thus amending a second copy of the original path. The cyclic permutations are the paths from P_i to Q_i with turning points $P_{i+1}, \dots, P_r, (\beta, 0), Q_1, \dots, Q_{i-1}$:



A lattice path with r turning points admits $r + 1$ cyclic permutations. As we will show now there is always exactly one permutation staying below the diagonal: Again we consider the doubled path as described above. Let g_0 denote the line through $P_0 := (0, \alpha)$ and $Q_0 := (\beta, 0)$ and g_i the line through P_i and Q_i for $i = 1, \dots, r$. Note that all these lines are parallel and that, since α and β are coprime, there is no turning point between P_i and Q_i lying on g_i . Hence there is one line $g_j, j \in \{0, \dots, r\}$ namely the one with the greatest distance from the origin, such that the path stays below this line.



Since the line g_i yields the diagonal of the i -th cyclic permutation of the original path, indeed exactly one of the permuted paths stays below the diagonal; hence we have proven:

Proposition 3.5. *Let α and β be two coprime positive integers.*

1. *For every lattice path from $(0, \alpha)$ to $(\beta, 0)$ there is exactly one cyclic permutation staying below the diagonal.*
2. *The number of $\langle \alpha, \beta \rangle$ -lean sets with r gaps equals the number of lattice paths with r ES-turns from $(0, \alpha)$ to $(\beta, 0)$ staying below the diagonal, and this number is given by*

$$\frac{1}{r+1} \binom{\alpha-1}{r} \binom{\beta-1}{r}.$$

In combination with Corollary 2.3 and Lemma 3.4 this result yields the following theorem:

Theorem 3.6. *Let $\alpha, \beta, r \in \mathbb{N}$ with $\gcd(\alpha, \beta) = 1$. Then the following numbers*

- (1) *The number of isomorphism classes of $\langle \alpha, \beta \rangle$ -semimodules minimally generated by $r+1$ elements.*
- (2) *The number of $\langle \alpha, \beta \rangle$ -lean sets with r gaps.*
- (3) *The number of lattice paths with r ES-turns from $(0, \alpha)$ to $(\beta, 0)$ staying below the diagonal.*

equal

$$L_{\alpha, \beta}(r) := \frac{1}{r+1} \binom{\alpha-1}{r} \binom{\beta-1}{r}.$$

Using standard techniques one can also deduce a formula for $\sum_{r \geq 0} L_{\alpha, \beta}(r)$, recovering results of Bizley, resp. Beauville, Fantechi–Göttsche–van Straten, and Piontowski:

$$\begin{aligned} \sum_{r \geq 0} L_{\alpha, \beta}(r) &= \sum_{r \geq 0} \frac{1}{r+1} \binom{\alpha-1}{r} \binom{\beta-1}{r} \\ &= \sum_{r \geq 0} \frac{1}{r+1} \binom{\alpha-1}{r} \frac{r+1}{\beta} \binom{\beta}{r+1} \\ &= \dots \end{aligned}$$

$$\begin{aligned}
\cdots &= \frac{1}{\beta} \sum_{r \geq 0} \binom{\alpha-1}{r} \binom{\beta}{r+1} \\
&= \frac{1}{\beta} \sum_{r \geq 1} \binom{\alpha-1}{r-1} \binom{\beta}{r} = \frac{1}{\beta} \sum_{r \geq 0} \binom{\alpha-1}{r-1} \binom{\beta}{r} \\
&= \frac{1}{\beta} \sum_{r \geq 0} \binom{\alpha-1}{\alpha-r} \binom{\beta}{r}.
\end{aligned}$$

The Vandermonde convolution yields

$$\begin{aligned}
\frac{1}{\beta} \sum_{r \geq 0} \binom{\alpha-1}{\alpha-r} \binom{\beta}{r} &= \frac{1}{\beta} \binom{\alpha+\beta-1}{\alpha} = \frac{1}{\beta} \frac{(\alpha+\beta-1)!}{\alpha! \cdot (\beta-1)!} = \frac{1}{\alpha+\beta} \frac{(\alpha+\beta)!}{\alpha! \cdot \beta!} \\
&= \frac{1}{\alpha+\beta} \binom{\alpha+\beta}{\alpha},
\end{aligned}$$

which implies the following result.

Theorem 3.7. *Let $\alpha, \beta \in \mathbb{N}$ be coprime. Then the following numbers*

- (1) *The number of isomorphism classes of $\langle \alpha, \beta \rangle$ -semimodules (cf. [1], [3], [5]).*
- (2) *The number of $\langle \alpha, \beta \rangle$ -lean sets.*
- (3) *The number of lattice paths from $(0, \alpha)$ to $(\beta, 0)$ staying below the diagonal (cf. [2]).*

equal

$$L_{\alpha, \beta} := \sum_{r \geq 0} L_{\alpha, \beta}(r) = \frac{1}{\alpha + \beta} \binom{\alpha + \beta}{\alpha}.$$

Remark 3.8. In particular $L_{\alpha, \beta}$ gives the number of (α, β) -fundamental couples and hence the number of inequalities appearing in condition (\star) of Theorem 3.13 in [4], also see [4, Remark 3.12].

Remark 3.9. In the special case $\beta = \alpha + 1$ the numbers $L_{\alpha, \beta}(r)$ and $L_{\alpha, \beta}$ coincide with certain combinatorial numbers. We get

$$L_{\alpha, \alpha+1}(r) = \frac{1}{\alpha} \binom{\alpha}{r} \binom{\alpha}{r+1} = N(\alpha, r+1),$$

the so-called *Narayana number* (cf. [6]). Moreover, $L_{\alpha, \alpha+1}$ agrees with the *Catalan number* C_α since

$$L_{\alpha, \alpha+1} = \sum_{r \geq 0} L_{\alpha, \alpha+1}(r) = \sum_{r \geq 0} N(\alpha, r+1) = C_\alpha,$$

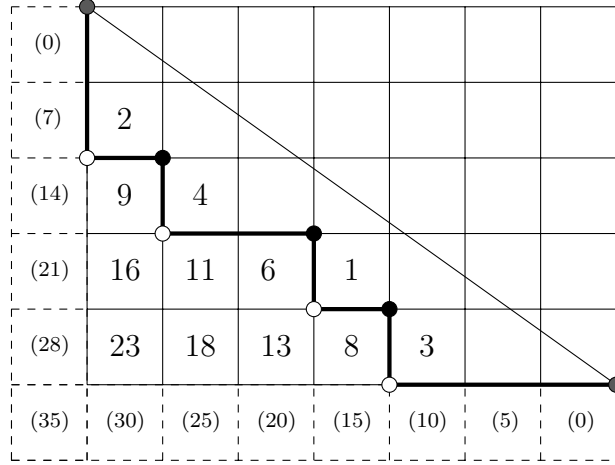
see [8, Exercise 6.36].

4. SYZYGIES OF $\langle \alpha, \beta \rangle$ -SEMIMODULES AND LATTICE PATHS

We consider now the sequences appearing in the second position of a fundamental couple. Let $[I, J]$ be a fundamental couple with sequences $I = [i_0 = 0, \dots, i_n]$ and $J = [j_0, \dots, j_n]$. By definition, the elements j_1, \dots, j_{n-1} are gaps of $\langle \alpha, \beta \rangle$ such that

$$j_k \equiv i_k \pmod{\alpha} \text{ and } j_k \equiv i_{k+1} \pmod{\beta}.$$

An inspection of the lattice path belonging to I shows that these gaps j_1, \dots, j_{n-1} correspond to the inner SE-turning points of the path. By extension of the labeling beyond the axis we can even identify j_0 and j_n with the remaining SE-turns. For illustration see again the example of the previous section:



$$I = [0, 8, 6, 9] \text{ and } J = [15, 13, 16, 14].$$

Next we explain the meaning of J in terms of $\langle \alpha, \beta \rangle$ -semimodules: Every $\langle \alpha, \beta \rangle$ -semimodule Δ yields another $\langle \alpha, \beta \rangle$ -semimodule $\text{Syz}(\Delta)$.

Definition 4.1. Let I be an $\langle \alpha, \beta \rangle$ -lean set, and let Δ be the $\langle \alpha, \beta \rangle$ -semimodule generated by I . The *syzygy* of Δ is the $\langle \alpha, \beta \rangle$ -semimodule

$$\text{Syz}(\Delta) := \bigcup_{\substack{i, i' \in I \\ i \neq i'}} ((i + \langle \alpha, \beta \rangle) \cap (i' + \langle \alpha, \beta \rangle)).$$

The semimodule $\text{Syz}(\Delta)$ consists of those elements in Δ which admit more than one presentation of the form $i + x$ with $i \in I, x \in \langle \alpha, \beta \rangle$. The name *syzygy* may be justified by considering an analogue of Δ in the setting of commutative algebra:

Let $R = \mathbb{F}[t^\alpha, t^\beta]$, then Δ can be identified with the R -submodule M of $\mathbb{F}[t]$ generated by $\{t^i \mid i \in I\}$. Let

$$\begin{aligned} \bigoplus_{i \in I} R(-i) &\xrightarrow{\varphi} M \\ (f_i) &\mapsto \sum_i f_i t^i \end{aligned}$$

be the first step in a graded minimal free resolution of M . By [5, Lemma 2.3] the kernel of φ is generated by (homogeneous) elements $v_{i,i'}$ of the form

$$(0, \dots, t^{\gamma_i}, 0, \dots, 0, -t^{\gamma_{i'}}, 0, \dots, 0),$$

with the non-zero entries in positions $i, i' \in I$. Since

$$\deg(v_{i,i'}) = \gamma_i + i = \gamma_{i'} + i' \in (i + \langle \alpha, \beta \rangle) \cap (i' + \langle \alpha, \beta \rangle)$$

the module $\ker \varphi$ is non-zero exactly in the degrees contained in $\text{Syz}(\Delta)$.

The connection between fundamental couples and syzygies is described in the following theorem:

Theorem 4.2. *Let $[I, J]$ be an $\langle \alpha, \beta \rangle$ -fundamental couple and let Δ be the $\langle \alpha, \beta \rangle$ -semimodule generated by the elements of I . Then*

$$\text{Syz}(\Delta) = \bigcup_{0 \leq k < m \leq n} \left((i_k + \langle \alpha, \beta \rangle) \cap (i_m + \langle \alpha, \beta \rangle) \right) = \bigcup_{k=0}^n (j_k + \langle \alpha, \beta \rangle).$$

Proof. By definition of a fundamental couple we have $j_k = i_k + r\alpha = i_{k+1} + s\beta$ with some $r, s \in \mathbb{N}$, hence the inclusion \supseteq is clear. In order to show the other inclusion, we consider $i_k + \langle \alpha, \beta \rangle \cap i_m + \langle \alpha, \beta \rangle$. For every $\gamma_m \in \langle \alpha, \beta \rangle$ we have $i_m + \gamma_m \in i_k + \langle \alpha, \beta \rangle$ if and only if $i_m - i_k + \gamma_m \in \langle \alpha, \beta \rangle$. As mentioned in the previous section, i_k and i_m can be written in the form

$$i_k = \alpha\beta - a_k\alpha - b_k\beta, \quad i_m = \alpha\beta - a_m\alpha - b_m\beta;$$

by Lemma 3.2 we may assume $a_k > a_m$ and $b_k < b_m$. Since

$$i_m - i_k = (a_k - a_m)\alpha + (b_k - b_m)\beta = \alpha\beta - (\beta - a_k + a_m)\alpha - (b_m - b_k)\beta$$

the characterization of $\mathbb{Z} \setminus \langle \alpha, \beta \rangle$ in Lemma 3.1 implies

$$\{\gamma \in \langle \alpha, \beta \rangle \mid \gamma + i_m - i_k \in \langle \alpha, \beta \rangle\} = ((\beta - a_k + a_m)\alpha + \langle \alpha, \beta \rangle) \cup ((b_m - b_k)\beta + \langle \alpha, \beta \rangle).$$

This means

$$\begin{aligned} &(i_m + \langle \alpha, \beta \rangle) \cap (i_k + \langle \alpha, \beta \rangle) \\ &= (i_m + (\beta - a_k + a_m)\alpha + \langle \alpha, \beta \rangle) \cup (i_m + (b_m - b_k)\beta + \langle \alpha, \beta \rangle). \end{aligned}$$

Moreover,

$$\begin{aligned}
i_m + (\beta - a_k + a_m)\alpha &= \alpha\beta - a_k\alpha - b_m\beta + \alpha\beta \\
&= (\beta - a_1)\alpha + (a_1 - a_k)\alpha + (\alpha - b_m)\beta \\
&= j_0 + (a_1 - a_k)\alpha + (\alpha - b_m)\beta \in j_0 + \langle \alpha, \beta \rangle,
\end{aligned}$$

and on the other hand

$$\begin{aligned}
i_m + (b_m - b_k)\beta &= \alpha\beta - a_m\alpha - b_m\beta + (b_m - b_k)\beta \\
&= \alpha\beta - a_m\alpha - b_k\beta \\
&= \alpha\beta - a_{k+1}\alpha - b_k\beta + (a_{k+1} - a_m)\alpha \\
&= j_k + (a_{k+1} - a_m)\alpha \in j_k + \langle \alpha, \beta \rangle,
\end{aligned}$$

hence $i_m + \langle \alpha, \beta \rangle \cap i_k + \langle \alpha, \beta \rangle \subseteq j_0 + \langle \alpha, \beta \rangle \cup j_k + \langle \alpha, \beta \rangle$. \square

Corollary 4.3. *Let $[I, J]$ be an $\langle \alpha, \beta \rangle$ -fundamental couple and let Δ be the $\langle \alpha, \beta \rangle$ -semimodule generated by the elements of I . We have*

$$\text{Syz}(\Delta) = \bigcup_{k=0}^{n-1} \left((i_k + \langle \alpha, \beta \rangle) \cap (i_{k+1} + \langle \alpha, \beta \rangle) \right) \cup \left((i_0 + \langle \alpha, \beta \rangle) \cap (i_n + \langle \alpha, \beta \rangle) \right).$$

Proof. This follows immediately from $j_k \in i_k + \langle \alpha, \beta \rangle \cap i_{k+1} + \langle \alpha, \beta \rangle$ for $k = 1, \dots, n-1$ resp. $j_n \in i_0 + \langle \alpha, \beta \rangle \cap i_n + \langle \alpha, \beta \rangle$ and the previous theorem. \square

5. ORBITS

Let $[I, J]$ a fundamental couple and let

$$\begin{pmatrix} y_0 & y_1 & \dots & y_n \\ x_0 & x_1 & \dots & x_n \end{pmatrix}$$

be the matrix describing the path for the semimodule Δ generated by I . We consider a second lattice path from $(0, b_n)$ (the point associated to j_n) to $(\beta, b_n - \alpha)$ with ES-turns in the SE-turning points of the first path (those points representing j_{n-1}, \dots, j_0). The matrix for this path is given by

$$\begin{pmatrix} y_1 & y_2 & \dots & y_n & y_0 \\ x_0 & x_1 & \dots & x_{n-1} & x_n \end{pmatrix}.$$

It is easily seen that—up to a cyclic permutation of columns—this matrix also describes the path belonging to the normalization Δ° of Δ : In terms of lattice paths normalizing Δ means translation of the path such that the ES-turn belonging to $\min J$ is moved to $(0, \alpha)$ and the part of the path left of this point will be appended behind the former end point.

The procedure of building a syzygy can be iterated; we set

$$\text{Syz}^{(k)}(\Delta) := \text{Syz}(\text{Syz}^{(k-1)}(\Delta)), \quad k \geq 2.$$

From the matrix description of the path for $\text{Syz}(\Delta)$ it is clear that $\text{Syz}^{(n+1)}(\Delta) \cong \Delta$. Now we consider under which conditions even lower syzygies of Δ are isomorphic with Δ .

Definition 5.1. A sequence $\Delta_1, \dots, \Delta_\ell$ of distinct $\langle \alpha, \beta \rangle$ -semimodules such that $\Delta_k = \text{Syz}(\Delta_{k-1})^\circ$ for $k = 2, \dots, \ell$, and $\Delta_1 = \text{Syz}(\Delta_\ell)^\circ$ is called an orbit of length ℓ or, for short, an ℓ -orbit (of $\langle \alpha, \beta \rangle$ -semimodules). The 1-orbits, i. e. $\langle \alpha, \beta \rangle$ -semimodules Δ with $\Delta \cong \text{Syz}(\Delta)$, are called $\langle \alpha, \beta \rangle$ -fixed points.

We want to count the number of ℓ -orbits of $\langle \alpha, \beta \rangle$ -semimodules with n generators. To this end we investigate the structure of a semimodule Δ with $\text{Syz}^{(\ell)}(\Delta) \cong \Delta$; we may restrict our attention to the case of ℓ dividing n , since the length of an orbit can be viewed as the order of an element in the cyclic group of order n . Let

$$\begin{pmatrix} y_0 & y_1 & \dots & y_{n-1} \\ x_0 & x_1 & \dots & x_{n-1} \end{pmatrix}$$

be the matrix for the path belonging to Δ . Then, as mentioned above, this matrix and the matrix

$$\begin{pmatrix} y_\ell & y_{\ell+1} & \dots & y_{\ell-2} & y_{\ell-1} \\ x_0 & x_1 & \dots & x_{n-1} & x_n \end{pmatrix},$$

have to be equal up to cyclic permutation of columns. This means that there exists a $k \in \{1, \dots, n-1\}$ such that

$$\begin{pmatrix} y_{k+\ell} & y_{k+\ell+1} & \dots \\ x_k & x_{k+1} & \dots \end{pmatrix} = \begin{pmatrix} y_0 & y_1 & \dots \\ x_0 & x_1 & \dots \end{pmatrix},$$

we may assume that k is minimal with this property. Since

$$\begin{pmatrix} y_{k+2\ell} & y_{k+2\ell+1} & \dots \\ x_k & x_{k+1} & \dots \end{pmatrix} = \begin{pmatrix} y_\ell & y_{\ell+1} & \dots \\ x_0 & x_1 & \dots \end{pmatrix}$$

we have

$$\begin{pmatrix} y_{2k+2\ell} & y_{2k+2\ell+1} & \dots \\ x_{2k} & x_{2k+1} & \dots \end{pmatrix} = \begin{pmatrix} y_{k+\ell} & y_{k+\ell+1} & \dots \\ x_k & x_{k+1} & \dots \end{pmatrix} = \begin{pmatrix} y_0 & y_1 & \dots \\ x_0 & x_1 & \dots \end{pmatrix}.$$

By induction we get $x_j = x_{rk+j}$ for $j \in \{0, \dots, k-1\}$, $r \geq 0$. Hence the bottom row of the matrix is of the form

$$[x_0 \ \dots \ x_{k-1}] [x_0 \ \dots \ x_{k-1}] \dots [x_0 \ \dots \ x_{k-1}].$$

On the other hand we can find a minimal $m \in \{2, \dots, n\}$ such that

$$\begin{pmatrix} y_{m-\ell} & y_{m-\ell+1} & \dots \\ x_m & x_{m+1} & \dots \end{pmatrix} = \begin{pmatrix} y_0 & y_1 & \dots \\ x_0 & x_1 & \dots \end{pmatrix},$$

and with the same reasoning as above, the top row of the matrix is of the form

$$[y_0 \ \dots \ y_{m-1}] [y_0 \ \dots \ y_{m-1}] \dots [y_0 \ \dots \ y_{m-1}].$$

Therefore the matrix for Δ looks like

$$\begin{pmatrix} [y_0 \ \dots \ y_{m-1}] & \dots & [y_0 \ \dots \ y_{m-1}] \\ [x_0 \ \dots \ x_{k-1}] & \dots & [x_0 \ \dots \ x_{k-1}] \end{pmatrix}$$

with m' blocks $[y_0 \ \dots \ y_{m-1}]$ and k' blocks $[x_0 \ \dots \ x_{k-1}]$. Since

$$m' \cdot \sum_{j=0}^{m-1} y_j = \alpha \quad \text{and} \quad k' \cdot \sum_{j=0}^{k-1} x_j = \beta, \quad (5.1)$$

the numbers m' and k' divide α resp. β , so in particular they are coprime. By assumption, ℓ is the least positive integer p such that the matrices

$$\begin{pmatrix} y_0 & y_1 & \dots \\ x_0 & x_1 & \dots \end{pmatrix} \quad \text{and} \quad \begin{pmatrix} y_p & y_{p+1} & \dots \\ x_0 & x_1 & \dots \end{pmatrix}$$

contain the same columns. This is the case if and only if there are $r, s \in \mathbb{N}$ with $p + sm = rk$. This implies that p has to be contained in the ideal generated by k and m . Hence, by minimality of ℓ , we get $\ell = \gcd(k, m)$, and so we may write $k = \tilde{k}\ell$ and $m = \tilde{m}\ell$. From $kk' = n = mm'$ we get $\tilde{k}k' = \tilde{m}m' = \frac{n}{\ell}$; by $\gcd(\tilde{k}, \tilde{m}) = 1$ this implies $\tilde{k} = m'$ and $\tilde{m} = k'$, and by $k' \mid \alpha$ and $m' \mid \beta$ moreover $k = \gcd(\beta, \frac{n}{\ell})$ and $m = \gcd(\alpha, \frac{n}{\ell})$, in particular $\frac{n}{\ell} \mid \alpha\beta$. By now we have shown the following proposition:

Proposition 5.2. *Let Δ be an $\langle \alpha, \beta \rangle$ -semimodule with n generators. If Δ is an element of an ℓ -orbit, then $\ell \mid n$ and $\frac{n}{\ell} \mid \alpha\beta$. The corresponding matrix is of the form*

$$\begin{pmatrix} [y_0 \ \dots \ y_{m-1}] & \dots & [y_0 \ \dots \ y_{m-1}] \\ [x_0 \ \dots \ x_{k-1}] & \dots & [x_0 \ \dots \ x_{k-1}] \end{pmatrix}, \quad (5.2)$$

where $k = \ell \cdot \gcd(\alpha, \frac{n}{\ell})$ and $m = \ell \cdot \gcd(\beta, \frac{n}{\ell})$.

In fact the structure described in the previous proposition is shared by all $\langle \alpha, \beta \rangle$ -semimodules Δ with n generators and $\text{Syz}^{(\ell)}(\Delta) \cong \Delta$ —not only by elements of ℓ -orbits:

Lemma 5.3. *Let Δ be an $\langle \alpha, \beta \rangle$ -semimodule with n generators, let $\ell \in \mathbb{N}$ be a divisor of n . If $\text{Syz}^{(\ell)}(\Delta) \cong \Delta$ then the matrix for Δ can be written in the form mentioned in Proposition 5.2.*

Proof. Let $d = \min\{t \in \mathbb{N} \mid \text{Syz}^{(t)}(\Delta) \cong \Delta\}$. Then $d \mid \ell$, and we only have to consider the case $d < \ell$. By Proposition 5.2 the matrix for Δ can be written in the form

$$\begin{pmatrix} [y_0 \ \dots \ y_{m_d-1}] & \dots & [y_0 \ \dots \ y_{m_d-1}] \\ [x_0 \ \dots \ x_{k_d-1}] & \dots & [x_0 \ \dots \ x_{k_d-1}] \end{pmatrix}$$

with $k'_d = \gcd(\beta, \frac{n}{d})$ blocks $[x_0 \ \dots \ x_{k_d-1}]$ and $m'_d = \gcd(\alpha, \frac{n}{d})$ blocks $[y_0 \ \dots \ y_{m_d-1}]$.

We want to obtain a matrix with $k'_\ell = \gcd(\beta, \frac{n}{\ell})$ blocks $[x_0 \dots x_{k'_\ell-1}]$ and $m'_\ell = \gcd(\alpha, \frac{n}{\ell})$ blocks $[y_0 \dots y_{m'_\ell-1}]$. Since $k'_\ell \mid k'_d$ and $m'_\ell \mid m'_d$, this is easily done by concatenating $\frac{k'_d}{k'_\ell}$ x -blocks resp. $\frac{m'_d}{m'_\ell}$ y -blocks. \square

Corollary 5.4. *Let $\ell \in \mathbb{N}$ be a divisor of $n < \alpha$. Then there exists an ℓ -orbit of $\langle \alpha, \beta \rangle$ -semimodules with n generators.*

Proof. Let k, k', m, m' be as in the proof of Prop. 5.2. Then $\sum y_i = \frac{\alpha}{m'} = m \frac{\alpha}{n} > m$ resp. $\sum x_i > k$. Hence $r := \frac{\alpha}{m'} - m + 1 > 1$ and $s := \frac{\beta}{k'} - k + 1 > 1$, so we may choose the matrix (5.2) to be built of blocks $[y_0 \dots] = [1 \ 1 \dots 1 \ r]$, $[x_0 \dots] = [1 \ 1 \dots 1 \ s]$. Since these blocks cannot be split into smaller ones, the corresponding semimodule cannot be part of a d -orbit with $d < \ell$. \square

Lemma 5.3 allows to count $\langle \alpha, \beta \rangle$ -semimodules Δ with $\text{Syz}^{(\ell)}(\Delta) \cong \Delta$ and n generators. Using the same notation as in the deduction of Proposition 5.2, we find the following: By (5.1) the steps in the y -block sum up to $\frac{\alpha}{m'}$, therefore the partial sums $\sum_{j=0}^r y_j$ for $r = 0, \dots, m-2$ (these are the y -coordinates of the first $m-1$ ES-turns in the corresponding path) have to be chosen in the range $1, \dots, \frac{\alpha}{m'} - 1$. Hence there are $\binom{\frac{\alpha}{m'}-1}{m-1}$ different y -blocks. Similarly there are $\binom{\frac{\beta}{k'}-1}{k-1}$ different x -blocks. Any combination of an x - and a y -block yields a matrix of the form (5.2), and so there are $\binom{\frac{\alpha}{m'}-1}{m-1} \binom{\frac{\beta}{k'}-1}{k-1}$ of them. But, as in the counting of lattice paths in section 3, only one of the n cyclic permutations of the matrix is admissible, hence we have to divide by n :

Theorem 5.5. *There are*

$$\frac{1}{n} \binom{\frac{\alpha}{\gcd(\frac{n}{\ell}, \alpha)} - 1}{\ell \cdot \gcd(\frac{n}{\ell}, \beta) - 1} \binom{\frac{\beta}{\gcd(\frac{n}{\ell}, \beta)} - 1}{\ell \cdot \gcd(\frac{n}{\ell}, \alpha) - 1} \quad (5.3)$$

$\langle \alpha, \beta \rangle$ -semimodules Δ with $\text{Syz}^{(\ell)}(\Delta) \cong \Delta$ generated by n elements.

In particular we get a formula for the number of $\langle \alpha, \beta \rangle$ -fixed points:

Corollary 5.6. *For any integer $n \leq \alpha$ with $n \mid \alpha\beta$ there are*

$$\frac{1}{n} \binom{\frac{\alpha}{\gcd(n, \alpha)} - 1}{\gcd(n, \beta) - 1} \binom{\frac{\beta}{\gcd(n, \beta)} - 1}{\gcd(n, \alpha) - 1} \quad (5.4)$$

$\langle \alpha, \beta \rangle$ -fixed points with n generators.

Remark 5.7.

- (1) In the case of $n = \ell$ the number provided by Theorem 5.5 agrees with that of all $\langle \alpha, \beta \rangle$ -semimodules with n generators (Thm. 3.6), in accordance to the fact that $\text{Syz}^{(n)}(\Delta) \cong \Delta$ for all these semimodules.

- (2) For $n = \alpha$ the formula (5.4) yields $\frac{1}{\alpha} \binom{\beta-1}{\alpha-1}$, which equals $L_{\alpha,\beta}(\alpha-1)$. Hence *all* $\langle \alpha, \beta \rangle$ -semimodules with maximal number of generators are fixed points—in this case there are only entries “1” in the top row of the matrix. Note that in the case of α and β being prime numbers there are no other fixed points.

One has to keep in mind that formula (5.3) does not only count the elements with n generators in the ℓ -orbits, but *all* semimodules with n generators such that $\text{Syz}^{(\ell)}(\Delta) \cong \Delta$, including those with $\text{Syz}^{(d)}(\Delta) \cong \Delta$ and $d < \ell$, in particular the fixed points. However, it is possible to compute the number of ℓ -orbits using the inclusion-exclusion principle, see the next and closing example.

Example 5.8. Let $\langle \alpha, \beta \rangle = \langle 15, 16 \rangle$. We want to compute how many orbits consisting of semimodules with 12 generators exist. Since 12 divides $15 \cdot 16$ there are ℓ -orbits for each divisor ℓ of 12. Denote the set of elements of those orbits by Orb_ℓ and the set of those semimodules Δ with n generators and $\text{Syz}^{(\ell)}(\Delta) \cong \Delta$ by A_ℓ . By Theorem 5.5 we get

$$|A_1| = 1, |A_2| = 7, |A_3| = 91, |A_4| = 455, |A_6| = 637, |A_{12}| = 41405.$$

We have $\text{Orb}_1 = A_1$, and one easily checks that

$$\begin{aligned} \text{Orb}_2 &= A_2 \setminus A_1 \\ \text{Orb}_3 &= A_3 \setminus A_1 \\ \text{Orb}_4 &= A_4 \setminus A_2 \\ \text{Orb}_6 &= A_6 \setminus (A_2 \cup A_3) \\ \text{Orb}_{12} &= A_{12} \setminus \cup_{i=1,2,3,4,6} \text{Orb}_i. \end{aligned}$$

Since $A_2 \cap A_3 = A_1$ we get

$$\begin{aligned} |\text{Orb}_1| &= 1 \\ |\text{Orb}_2| &= |A_2| - |A_1| = 6 \\ |\text{Orb}_3| &= |A_3| - |A_1| = 90 \\ |\text{Orb}_4| &= |A_4| - |A_2| = 448 \\ |\text{Orb}_6| &= |A_6 \setminus (A_2 \cup A_3)| = |A_6| - |A_2| - |A_3| + |A_1| = 540 \\ |\text{Orb}_{12}| &= 41405 - 540 - 448 - 90 - 6 - 1 = 40320, \end{aligned}$$

and thus the following numbers of ℓ -orbits:

$$\frac{\ell}{\frac{1}{\ell}|\text{Orb}_\ell|} \begin{array}{c|c|c|c|c|c|c} \hline \ell & 1 & 2 & 3 & 4 & 6 & 12 \\ \hline \frac{1}{\ell}|\text{Orb}_\ell| & 1 & 3 & 30 & 112 & 90 & 3360 \\ \hline \end{array}$$

Concluding the discussion of this example we determine the single fixed point. By Proposition 5.2 the rows of the corresponding matrix have to consist of three blocks $[y_0, y_1, y_2, y_3]$ resp. four blocks $[x_0, x_1, x_2]$. Since the entries in those blocks sum up

to $\frac{15}{3} = 5$ resp. $\frac{16}{4} = 4$ both blocks have to contain entries “1” and a single entry “2” i.e. up to cyclic permutation the matrix of the fixed point looks like

$$\begin{pmatrix} 1 & 1 & 1 & 2 & 1 & 1 & 1 & 2 & 1 & 1 & 1 & 2 \\ 1 & 1 & 2 & 1 & 1 & 2 & 1 & 1 & 2 & 1 & 1 & 2 \end{pmatrix}.$$

By considering the corresponding lattice path one can deduce that the admissible permutation of the path is described by

$$\begin{pmatrix} 2 & 1 & 1 & 1 & 2 & 1 & 1 & 1 & 2 & 1 & 1 & 1 \\ 1 & 1 & 2 & 1 & 1 & 2 & 1 & 1 & 2 & 1 & 1 & 2 \end{pmatrix},$$

and the minimal set of generators of the $\langle 15, 16 \rangle$ -semimodule Δ belonging to this path is given by $I = \{0, 14, 13, 12, 10, 9, 8, 22, 5, 4, 18, 17\}$; the first syzygy of Δ is generated by $J = \{30, 29, 28, 42, 25, 24, 38, 37, 20, 34, 33, 32\}$.

Acknowledgements. The authors wish to express their gratitude to Evgeny Gorsky and Carlos Marijuán López for many helpful suggestions as well as for their encouraging interest in our work.

The first author was partially supported by the Spanish Government Ministerio de Educación y Ciencia, grant MTM2007-64704 and Ministerio de Economía y Competitividad, grant MTM2012-36917-C03-03, in cooperation with the European Union in the framework of the funds “FEDER”.

REFERENCES

- [1] A. Beauville, *Counting rational curves on K3 surfaces*. Duke Math. J. **97** (1999), 99–108.
- [2] M. T. L. Bizley, *Derivation of a new formula for the number of minimal lattice paths from $(0, 0)$ to (km, kn) having just t contacts with the line $my = nx$ and having no points above this line; and a proof of Grossman’s formula for the number of paths which may touch but do not rise above this line*. J. Inst. Actuar. **80** (1954) 55–62.
- [3] B. Fantechi, L. Göttsche, D. van Straten, *Euler number of the compactified Jacobian and multiplicity of rational curves*. J. Alg. Geom. **8** (1999), 115–133.
- [4] J. J. Moyano-Fernández, J. Uliczka, *Hilbert depth of graded modules over polynomial rings in two variables*. J. of Algebra **373** (2013) 130–152.
- [5] J. Piontowski, *Topology of the Compactified Jacobians of Singular Curves*. Math. Z. **255**(1) (2007), 195–226.
- [6] H. Prodinger, *A correspondence between ordered tress and noncrossing partitions*. Discrete Mathematics **46** (1983), 205–206.
- [7] J. C. Rosales, *Fundamental gaps of numerical semigroups generated by two elements*. Linear Algebra and its Appl. **405** (2005) 200–208.
- [8] R. P. Stanley, *Enumerative Combinatorics* Vol. 2. Cambridge Studies in Adv. Math. 62, Cambridge U.P. 1999