

Sociedad Española de Historia Agraria - Documentos de Trabajo

DT-SEHA n. 1409

Julio 2014

www.seha.info

WINE HISTORICAL STATISTICS: A QUANTITATIVE APPROACH TO ITS CONSUMPTION, PRODUCTION AND TRADE, 1840-1938

S E H A

Vicente Pinilla*

* Universidad de Zaragoza, Department of Applied Economics and Economic History, Facultad de Economía y Empresa, Gran Vía 2, 50005 Zaragoza, Spain.

Contacto: vpinilla@unizar.es

Wine Historical Statistics: A Quantitative Approach to its Consumption, Production and Trade, 1840-1938

Resumen:

En este trabajo se ofrece una compilación de estadísticas sobre el consumo, la producción y el comercio internacional de vino desde mediados del siglo XIX hasta el inicio de la Segunda Guerra Mundial. Los datos estadísticos se organizan en tres partes: consumo, producción y comercio. Los datos corresponden tanto al conjunto del mundo, como a una amplia muestra de países. Dentro de estos, los que cuentan con mayor información son los más importantes en el mercado del vino: España, Francia e Italia.

Palabras clave: Comercio de vino, producción de vino, consumo de vino, comercio agrario, estadísticas históricas

Abstract:

This working paper provides a compilation of statistics on international wine consumption, production and trade from the mid-nineteenth century until the beginning of the Second World War. The statistical data is structured in three parts dealing with consumption, production and trade both at the world level and for a broad sample of countries. The data presented for Spain, France and Italy, the leading three nations in the wine market, are especially wide-ranging.

Key words: Wine trade, wine production, wine consumption, agricultural trade, historical statistics

JEL Codes: N50, N70, Q11, Q17.

INDEX

I. INTRODUCTION.....	6
II. CONSUMPTION.....	8
TABLE C.1. EVOLUTION OF ALCOHOLIC BEVERAGES CONSUMPTION, 1886-1929.....	8
TABLE C.2. PER CAPITA CONSUMPTION OF WINE AND BEER IN VARIOUS COUNTRIES, 1923-1927 (five year averages) (pure alcohol in liters)	10
TABLE C.3. AVERAGE PER CAPITA WINE CONSUMPTION AND DISTRIBUTION OF WINE CONSUMPTION AMONG THE DIFFERENT REGIONS OF THE WORLD	11
TABLE C.4. WINE CONSUMPTION IN FRANCE, 1850-1938.....	12
III. PRODUCTION	14
TABLE P.1. WORLD WINE PRODUCTION, 1900-1938 (annual production) (in thousands of hectoliters).....	14
TABLE P.2. WORLD WINE PRODUCTION, 1900-1938 ANNUAL PRODUCTION (in thousands of hectoliters) (five year averages).....	19
FIGURE P.1. WORLD WINE PRODUCTION, 1901-1938 (thousands of hectoliters) (annual data and moving averages)	20
TABLE P.3. FRENCH AND SPANISH WINE PRODUCTION (thousands of hectoliters)	21
IV. TRADE.....	24
TABLE T.1. WINE EXPORTS (World totals and selection of main exporting countries) (in thousands of hectoliters)	24

TABLE T.2. WINE IMPORTS. (World totals and selection of main importing countries) (in thousands of hectoliters).....	27
TABLE T.3. WORLD TRADE IN WINE, 1909-1938 (five year averages) (in thousands of hectoliters)	31
TABLE T.4. WINE EXPORTS. FRANCE, ITALY AND SPAIN (in hectoliters)	32
FIGURE T.1. WINE EXPORTS. FRANCE, ITALY AND SPAIN (in hectoliters).....	34
TABLE T.5. BRITISH WINE IMPORTS, 1855-1934 (gallons and pounds)	35
TABLE T.6. FRENCH EXPORTS OF TABLE WINE, 1855-1938 (commerce general)	37
'TABLE T.7. FRENCH IMPORTS OF TABLE WINE, 1847-1938 (in casks) (commerce general).....	39
TABLE T.8. FRENCH IMPORTS OF ORDINARY WINES (percentages) (in casks) (commerce general)	41
TABLE T.9. FRENCH IMPORTS OF TABLE WINE, 1847-1938 (in bottles) (hectoliters) (commerce general)	42
TABLE T.10. FRENCH IMPORTS OF LIQUOR WINE, 1847-1938 (in casks) (commerce general).....	44
TABLE T.11. FRENCH DUTIES ON ORDINARY WINE.....	46
TABLE T.12. SPANISH EXPORTS OF WINE (hectolitres)	48
TABLE T.13. SPANISH EXPORTS OF WINE (in pesetas at 1910 prices)	50
TABLE T.13. BREAKDOWN OF SPANISH EXPORTS OF TABLE WINE IN CASKS (Hectolitres).....	52
REFERENCES	53

I. INTRODUCTION

Wine was one of the three key products of Mediterranean agriculture in Spain, together with cereals (especially wheat) and olive oil, accounting for a significant part of cultivated land and agricultural output. It was also one of the key exports produced by Spanish farmers in the mid-nineteenth century. Wine exports grew exponentially in the second half of the nineteenth century as a consequence of the export opportunities opened up by the phylloxera plague in France. Vineyards spread and output rose in Spain. The end of the century would bring about a dual crisis for wine production however. On the one hand, access to the French market became extraordinary difficult, while on the other the phylloxera plague finally arrived in Spain, devastating the country's vineyards. The first three decades of the twentieth century was therefore a difficult time both in foreign markets, where Spanish wines faced high entry barriers, and domestically, given the need for capital to replant vineyards, overproduction and very high prices, creating an extraordinarily difficult combination of problems.

In this light, it need hardly surprise us that the development of viticulture should have attracted the interest of researchers. In the case of foreign markets (our research focus) the literature initially attributed the success of Spanish wine exports and their subsequent collapse as the exclusive consequence of exceptional demand in France between 1875 and 1891, when French vineyards were devastated by the phylloxera plague (Carnero, 1980). However, subsequent broader approaches to the phenomenon explained the growth of Spain's wine exports to France in the general context of the unequal progress made by Spanish winemakers in other markets (Pan-Montojo, 1994), or in terms of the low entry barriers to table wines, making this segment vulnerable to the attentions of new producers, despite the difficulties encountered by exporters in penetrating the markets of non-winegrowing countries (Simpson, 1995).

In recent years, a number of studies have to examine these lines of research in greater depth, broadening and varying the approach with the help of econometric models allowing empirical verification of hypotheses. Key research in this regard includes the examination of the detrimental impacts of French and other countries' tariff policies on Spanish wine exports (Pinilla and Ayuda, 2002; and Pinilla and Serrano, 2008), and the investigation of the difficult penetration of markets in high-income

nations (Ayuda, Aparicio and Pinilla 1998; and Pinilla and Ayuda, 2007 and 2008). Furthermore, the rise and subsequent decline in exports of sherry wines from Jerez has aroused much discussion, both from the standpoint of the product's standing and problems in the British market, and from the perspective of exporters' strategies, conduct and results (Fernández, 2010; Montañés, 2000; Simpson, 2004, 2005, 2010 and 2011).

In this context, the present work provides a compilation of the statistical data on Spanish wine exports and the international market which I have used and generated over the course of a research project undertaken with a number of different co-authors. My initial interest in Spanish wine exports arose out of broader research into Spain's trade in agricultural trade undertaken in collaboration with Domingo Gallego (Pinilla, 1995; Gallego and Pinilla, 1996; Gallego, 2001 and 2003). Agricultural exports, and in particular the wine and Mediterranean horticultural products trade were my contribution to this project (Aparicio, Ayuda and Pinilla, 2002; Ayuda, Aparicio and Pinilla, 1998; Pinilla and Ayuda, 2002, 2007, 2008, 2009 and 2010; Serrano and Pinilla, 2008). My research into wine exports really took off in 1996-1997 during a stay at the University of California at Davis, where I was able to use the magnificent library, which contains a wealth of specialist material. Since then, I have continued my research in this area, which I believe has contributed to our knowledge of the Spanish wine industry and of the international market, given Spain's major role in its development.

Much of the statistical data presented here has already been published in the course of this research described, although the present work also contains a trove of as yet unpublished data. Most of the statistics focus on the international market or on the export trade carried on by Spain, France and Italy, the three key players.

The statistics have not been harmonized, and their use requires some attention in order to sort out the data provided. The principal sources used in the case of the international market comprise the statistical year books published by the International Institute of Agriculture based in Rome, and Spanish and French foreign trade statistics. Some of the tables embody considerable preparatory work by the author and co-authors, like the annual series presented for world wine output, exports of Spanish table wines and their destinations, and the trade in French wine exports. In other cases, the data are provided direct from the sources.

II. CONSUMPTION

TABLE C.1. EVOLUTION OF ALCOHOLIC BEVERAGES CONSUMPTION, 1886-1929

WINE CONSUMPTION (liters per head)

	U.K.	Denmark	Norway	Austria	Hungary	Switzerland	Germany	Netherlands	Belgium	France	Portugal	Spain	Italy	U.S.A.
1886-1890	1.7		0.8	24.0	19.0		5.8	2.0	3.3	91.0		72.0	99.0	2.0
1891-1895	1.7		1.2	17.0	10.0		5.4	1.9	3.8	108.0		85.0	91.0	1.5
1896-1900	1.8	1.8	2.5	18.0	11.0	75.0	6.3	1.8	4.2	130.0	92.0	87.0	92.0	1.4
1901-1905	1.5	1.6	1.5	18.0	18.0	75.0	7.0	1.7	4.6	139.0	92.0	88.0	112.0	1.8
1906-1910	1.2	1.5	1.1	19.0	22.0	55.0	4.9	1.5	5.1	144.0		77.0	128.0	2.3
1911-1913	1.1	1.4	1.5	18.0	13.0	57.0	4.7	1.3	4.2	142.0		92.0	128.0	2.3
1920-1924	1.3	1.6	2.7	17.0	36.0	50.0	4.5	1.5	7.7	168.0		96.0	92.0	0.5
1925-1929	1.5	1.6	2.5	15.0	22.0	44.0		1.7	6.0	160.0		88.0	97.0	

BEER CONSUMPTION (liters per head)

	U.K.	Denmark	Norway	Austria	Hungary	Switzerland	Germany	Netherlands	Belgium	France	Portugal	Spain	Italy	U.S.A.
1886-1890	127.0		16.9	52.0	3.6	40.0	95.0		171.0	21.9			0.8	48.0
1891-1895	135.0		22.8	62.0	7.8	51.0	103.0		183.0	22.9			0.6	58.0
1896-1900	144.0	97.6	24.4	71.0	9.0	67.0	116.0	31.2	208.0	25.3			0.6	59.0
1901-1905	134.0	95.8	21.0	68.0	7.6	64.0	112.0	30.6	218.0	27.1			0.9	66.0
1906-1910	123.0	92.0	18.6	70.0	10.0	69.0	105.0	27.4	220.0	29.7			1.6	75.0
1911-1913	124.0	86.2	21.3	72.0	14.7	80.0	104.0	28.5	226.0	33.6			2.2	78.0
1920-1924	81.0	68.3	30.9	52.0	7.0	36.0	50.0	23.5	177.0	24.6			3.2	9.0
1925-1929	75.0	59.0	21.5	78.0	6.7	54.0	81.0	25.9	183.0	29.6			2.8	4.0

SPIRITS CONSUMPTION (pure alcohol per head)

	U.K.	Denmark	Norway	Austria	Hungary	Switzerland	Germany	Netherlands	Belgium	France	Portugal	Spain	Italy	U.S.A.
1886-1890	2.5	6.8	1.5					4.5	4.5	3.9			0.6	2.5
1891-1895	2.6	7.3	1.7			2.5	4.4	4.4	4.8	4.2			0.6	2.6
1896-1900	2.7	7.1	1.3			2.4	4.3	3.3	4.2	4.4			0.6	2.1
1901-1905	2.6	6.7	1.5			1.9	4.0	3.9	3.5	3.5			0.7	2.6
1906-1910	2.2	5.8	1.4			2.1	3.7	3.4	2.7	3.4			0.5	2.7
1911-1913	1.7	5.3	1.7			1.6	2.2	2.6	2.9	3.9			0.7	2.8
1920-1924	1.0	1.7	0.4			0.5	1.1	1.6	1.2	2.3			0.8	
1925-1929	0.8	2.0	0.7			1.0	1.2	1.1	1.3	2.6			0.6	

Source: Annuaire Statistique de la France (1938)

Published in: Aparicio, Ayuda and Pinilla (2002): 685-686.

TABLE C.2. PER CAPITA CONSUMPTION OF WINE AND BEER IN VARIOUS COUNTRIES, 1923-1927 (five year averages) (pure alcohol in liters)

		WINE	BEER
High wine consumption countries	ITALY	12.60	0.12
	FRANCE	12.40	1.47
	SPAIN	12.29	0.09
Medium wine consumption countries	ARGENTINA	5.80	0.72
	GREECE	4.62	0.01
	SWITZERLAND	4.52	1.85
Low wine consumption countries	HUNGARY	3.24	0.24
	BULGARIA	2.28	0.12
	ROMANIA	1.48	0.18
	AUSTRIA	1.45	2.53
Very low wine consumption countries	YUGOSLAVIA	1.16	0.20
	BELGIUM	0.82	7.39
	NORWAY	0.45	1.12
	GERMANY	0.44	2.36
	CZECHOSLOVAKIA	0.34	2.47
	AUSTRALIA	0.29	2.29
	UNITED KINGDOM	0.22	3.87
	DENMARK	0.21	2.04
	NETHERLANDS	0.21	1.75
	IRELAND	0.15	2.02
	CANADA	0.13	0.95
	ESTONIA	0.09	0.30
	NEW ZEALAND	0.08	1.94
	SWEDEN	0.07	0.98
	RUSSIA	0.06	0.12
LATVIA	0.03	0.19	
LITHUANIA	0.01	0.18	

Source: Imperial Economic Committee (1932)

Published in: Pinilla and Ayuda (2007): 182.

TABLE C.3. AVERAGE PER CAPITA WINE CONSUMPTION AND DISTRIBUTION OF WINE CONSUMPTION AMONG THE DIFFERENT REGIONS OF THE WORLD

	Per capita consumption (in liters)	Distribution of consumption (in percentages)
Europe	42.0	83.3
USSR	3.0	2.5
North America	4.5	3.1
Central and S. America	9.5	6.0
Asia	0.1	0.6
Africa	5.3	4.1
Oceania	6.8	0.4
Total	9.5	100.0

Source: International Institute of Agriculture (1944): 30, 56

Published in: Aparicio, Ayuda and Pinilla (2002): 684

TABLE C.4. WINE CONSUMPTION IN FRANCE, 1850-1938

	TOTAL CONSUMPTION (thousands hl.)	CONSUMPTION PER CAPITA (liters)
1850	20,832	58
1851	21,167	59
1852	19,772	55
1853	16,673	46
1854	12,811	35
1855	10,342	29
1856	12,315	34
1857	13,642	38
1858	18,569	51
1859	21,592	59
1860	17,041	47
1861	18,535	50
1862	20,617	55
1863	22,339	59
1864	22,639	60
1865	25,280	66
1866	28,466	75
1867	26,056	68
1868	27,059	71
1869	27,488	75
1870	24,594	67
1871	23,847	66
1872	27,754	77
1873	27,277	75
1874	23,918	66
1875	29,416	80
1876	32,071	87
1877	29,904	81
1878	28,746	77
1879	28,816	77
1880	26,172	70
1881	28,578	76
1882	27,710	73
1883	27,906	74
1884	28,887	76
1885	28,087	74
1886	26,583	70
1887	26,189	69
1888	26,109	68
1889	27,228	71
1890	28,022	73
1891	27,802	72
1892	28,930	75
1893	30,100	78
1894	32,843	85
1895	34,142	89
1896	33,292	86
1897	34,379	89

1898	34,938	90
1899	35,270	91
1900	35,895	92
1901	43,444	111
1902	45,906	118
1903	42,048	107
1904	40,355	103
1905	43,680	111
1906	47,138	120
1907	47,405	121
1908	48,430	123
1909	49,251	125
1910	46,319	117
1911	36,613	92
1912	41,293	104
1913	39,876	100
1914	35,065	106
1915	47,701	143
1916	33,983	103
1917	35,892	110
1918	34,740	106
1919	43,100	135
1920	40,150	103
1921	45,040	115
1922	44,512	113
1923	48,779	122
1924	49,914	124
1925	51,533	127
1926	55,491	136
1927	42,098	103
1928	45,409	111
1929	47,700	116
1930	50,384	121
1931	48,646	116
1932	49,107	117
1933	49,071	117
1934	48,759	116
1935	49,629	118
1936	51,799	124
1937	49,468	118
1938	48,900	117

Source: Annuaire Statistique de la France (1938).

III.PRODUCTION

TABLE P.1. WORLD WINE PRODUCTION, 1900-1938 (annual production) (in thousands of hectoliters)

	1901	1902	1903	1904	1905	1906	1907	1908	1909	1910	1911	1912	1913	1914
Germany	1,800	2,228	3,407	3,820	3,470	1,472	2,243	2,822	1,819	762	2,631	1,817	904	829
Austria	4,796	4,857	3,766	4,484	5,337	4,298	4,250	8,142	6,253	2,547	3,837	3,970	4,373	3,615
Bulgaria	1,214	1,214	970	1,457	1,316	701	780	1,479	1,187	694	496	644	548	313
Spain	20,159	10,965	13,365	19,670	15,933	12,217	16,546	16,701	13,245	10,155	13,272	14,819	15,395	14,551
France	60,074	42,257	35,240	68,883	57,857	52,241	66,070	60,799	54,640	28,723	45,044	59,531	44,337	59,981
Greece	990	1,800	1,170	1,620	990	1,949	1,949	1,949	1,949	1,949	2,908	3,184	3,184	3,461
Hungary	2,793	2,907	2,654	3,831	3,453	3,284	3,413	7,221	4,363	2,765	4,939	3,192	3,971	2,905
Italy	44,180	41,440	35,100	40,878	29,289	29,784	53,903	51,749	61,773	29,293	42,654	44,123	52,240	43,046
Luxemburg	151.2	0	0	0	0	24	36	128	27	29	123	36	3	43
Malta	10	10	10	10	10	10	10	10	10	10	10	10	10	10
Portugal	6,000	4,800	3,523	6,200	4,100	4,568	5,719	6,869	4,816	4,484	4,151	4,008	4,455	4,455
P. Madeira	49	49	49	49	49	49	49	49	49	49	49	49	49	49
Romania	891	1,043	1,854	836	1,760	1,761	968	2,284	1,270	1,713	993	1,590	1,519	661
Switzerland	1,356	1,191	989	1,267	1,290	1,285	682	925	409	244	749	659	181	368
Czechoslovakia	201	179	179	179	179	179	179	179	179	179	158	116	74	98
URSS	2,310	2,310	2,310	2,310	2,310	2,310	2,310	2,310	2,310	2,310	1,164	1,164	1,164	3,252
Yugoslavia	120	232	227	367	396	574	536	856	394	154				
Canada												45		
United States	934	914	1,692	1,186	1,266	1,068	1,501	1,804	1,585	1,780	1,787	2,122	1,801	1,808
Mexico	12	8	19	30	3	6	7	4	5	5	6	7	8	6
Cyprus	150	175	175	175	175	175	175	175	175	175	175	175	175	175
I.I. Egeo														
Japan	7	7	7	8	8	14	22	14	16	15	15	15	15	15
Palestine														
Syria														
Turkey	490	490	490	490	490	490	490	490	490	490	490	490	490	490

Algeria	5,738	4,354	6,589	7,630	7,052	7,347	7,853	7,804	8,229	8,414	8,834	6,671	7,370	9,311
Cirenaica														
French Morocco														
Tripolitana														
Tunisia	170	100	300	280	300	410	357	345	350	350	440	290	300	200
Argentina	1,360	1,891	1,741	1,838	2,426	2,621	2,843	3,350	3,900	3,818	4,200	5,000	5,144	4,823
Brazil	480	480	480	480	480	480	480	480	480	480	480	480	480	480
Chile	1,349	903	1,362	1,124	1,141	1,517	1,894	2,261	2,227	1,332	1,964	2,263	2,952	3,081
Peru	109	109	109	109	109	109	109	109	109	109	109	109	109	109
Uruguay	70	89	105	116	105	85	100	162	170	147	106	194	165	114
Madagascar														
Union of South Africa	163	242	259	259	259	259	271	247	159	341	341	437	437	437
Australia	264	236	285	266	254	270	202	251	209	267	226	277	214	131
New Zeland												2	4	4
WORLD TOTAL	158,391	127,482	118,428	169,854	141,810	131,560	175,948	181,969	172,797	103,780	142,350	157,490	152,072	158,331

Estimated production without annual data	2,509	2,802	1,511	1,751	1,751	5,218	9,160	3,392	2,956	7,444	2,002	5,739	6,894	5,827
--	-------	-------	-------	-------	-------	-------	-------	-------	-------	-------	-------	-------	-------	-------

	1915	1916	1917	1918	1919	1920	1921	1922	1923	1924	1925	1926	1927	1928
Germany	2,429	968	1,760	2,456	1,567	2,196	1,579	3,066	712	1,624	1,432	890	1,285	1,848
Austria	3,199	1,697	2,506	1,213	288	292	397	938	822	305	860	462	226	775
Bulgaria	429	540	594	610	703	356	548	602	813	1,153	1,037	1,373	1,375	1,482
Spain	7,911	21,056	21,386	20,311	18,472	24,094	17,284	23,105	19,870	19,570	24,028	14,178	25,493	19,876
France	20,443	36,068	38,273	45,160	55,248	56,759	47,903	76,781	59,911	67,949	65,065	42,612	51,210	60,321
Greece	3,053	2,473	2,724	2,856	2,400	1,635	1,686	1,715	1,890	2,132	2,126	2,423	2,043	2,768
Hungary	2,735	2,892	5,048	5,131	0	2,538	3,129	4,153	4,176	1,231	3,097	1,164	1,644	2,831
Italy	19,055	38,960	48,715	36,408	35,002	42,294	31,908	35,585	53,948	44,714	45,367	37,076	35,650	46,823
Luxemburg	228	22	71	92	79	153	26	221	7	123	19	31	40	27
Malta	10	10	10	10	10	10	3	13	40	41	42	30	39	51
Portugal	4,902	4,675	4,434	4,324	5,214	3,453	4,607	5,793	6,131	5,315	5,672	3,666	9,267	4,525
P. Madeira	49	49	49	49	49	49	49	59	66	98	89	55	106	88
Romania	1,997	1,861	1,861	1,724	2,209	2,371	3,903	3,903	5,435	6,114	7,585	5,065	7,101	7,123
Switzerland	666	331	608	765	590	389	479	1,080	782	375	550	455	327	660
Czechoslovakia	98	98	121	95	69	333	454	595	330	262	313	140	106	323
URSS	2,478	2,478	2,478	2,478	2,478	2,478	2,478	2,478	2,478	2,478	2,478	2,478	1,705	3,107
Yugoslavia	437	521	833			3,460	3,150	4,565	4,414	2,918	4,097	2,912	2,855	4,318
Canada														
United States	1,700	1,176	1,528	1,472	1,326	760	777	241	557	343	138	221	167	186
Mexico	4	1	5	5	5	5	5	8	8	8	8	8	8	8
Cyprus	175	175	200	190	247	381	88	107	261	134	135	249	239	241
I.I. Egeo														
Japan	15	15	15	15	15	15	13	14	11	10	9	5	5	5
Palestine							32	28	25	27	29	19	26	25
Syria							19	13	21	39	29	29	29	29
Turkey						13	19			195	195	195	33	27
Algeria	5,139	8,781	6,233	6,343	7,783	7,041	5,002	7,490	10,186	9,449	12,366	8,379	8,041	13,667
Cirenaica														
French Morocco								40	70	60	130	120	200	120
Tripolitana														

Tunisia	125	450	432	608	444	498	284	618	781	839	919	737	627	934
Argentina	4,515	4,752	4,313	4,071	4,524	6,155	4,968	5,440	5,521	6,504	5,284	4,085	7,287	8,368
Brazil	480	480	480	480	480	480	473	750	442	707	819	857	841	753
Chile	1,614	2,243	2,066	1,658	1,733	2,202	2,137	2,353	2,147	2,225	1,966	3,085	3,471	3,278
Peru	109	109	111	92	74	76	78	80	88	88	88	95	95	95
Uruguay	206	192	256	194	194	361	230	320	350	362	293	399	359	409
Madagascar														
Union of South Africa	437	437	533	571	706	700	606	609	341	608	611	584	717	657
Australia	268	233	312	395	348	501	389	520	667	605	738	930	787	837
New Zeland											3	3		
WORLD TOTAL	84,906	133,746	147,955	139,779	142,257	162,048	134,702	183,282	183,302	178,604	187,620	135,012	163,402	186,585

Estimated production without annual data	3,854	5,602	6,817	3,224	3,036	2,546	6,464	6,381	2,507	2,611	2,516	2,610	132	3,332
--	-------	-------	-------	-------	-------	-------	-------	-------	-------	-------	-------	-------	-----	-------

	1929	1930	1931	1932	1933	1934	1935	1936	1937	1938
Germany	1,817	2,532	2,556	1,550	1,503	3,789	3,492	2,772	2,115	2,043
Austria	573	1,202	1,385	1,078	930	909	1,379	984	853	853
Bulgaria	1,471	1,400	1,944	2,011	1,371	1,359	1,821	743	1,301	2,111
Spain	22,498	16,405	17,167	19,069	17,343	19,062	14,949	13,500	15,480	15,480
France	65,016	45,638	59,331	49,820	51,766	78,144	76,066	43,685	54,331	61,000
Greece	2,292	1,989	1,751	3,433	3,519	3,240	4,590	1,746	3,060	3,726
Hungary	2,241	3,619	3,510	3,201	2,610	2,142	2,421	3,843	3,780	2,754
Italy	41,050	36,333	36,332	45,412	33,035	30,873	46,658	33,644	34,001	41,400
Luxemburg	100	35	77	0	48	118	60	59	49	69
Malta	44	31	33	52	35	23	26	18	21	54
Portugal	6,600	5,785	7,380	6,150	9,200	10,805	5,924	3,709	8,049	10,955
P. Madeira	71	108	128	114	100	92	90	32	113	113
Romania	5,046	8,385	8,748	7,815	7,514	8,704	10,458	6,707	10,663	9,924
Switzerland	746	572	525	388	240	847	1,100	488	469	338
Czechoslovakia	224	474	456	434	338	329	601	525	545	545
URSS	4,509	4,509	4,750	4,750	5,000	5,000	5,000	5,000	5,000	5,000
Yugoslavia	2,910	4,016	4,494	4,387	2,853	3,867	5,418	3,865	2,903	4,672

Canada	281	260	306	197	87	168	116	74	74	74
United States	431	119	252	197	710	1,546	1,709	2,808	2,124	3,757
Mexico	8	8	8	8	8	8	8	8	8	8
Cyprus	215	176	87	165	107	121	167	158	93	227
I.I. Egeo	15	17	6	12	15	13	16	6	12	12
Japan	5	15	15	15	15	25	25	25	25	25
Palestine	36	43	28	22	16	24	25	23	25	30
Syria	20	20	19	23	12	29	34	56	38	43
Turkey	32	22	38	53	51	45	87	54	71	121
Algeria	12,809	13,744	15,857	18,315	16,731	22,043	18,910	11,527	15,424	21,490
Cirenaica	0	0	0	0						
French Morocco	155	125	300	377	440	580	520	265	582	778
Tripolitana				16	19	25	31	32	32	32
Tunisia	1,079	1,000	712	1,710	1,420	1,700	1,700	1,420	1,454	1,976
Argentina	5,465	5,176	2,101	6,500	7,500	4,417	5,750	7,936	9,262	6,631
Brazil	1,637	1,209	933	686	526	762	854	898	828	802
Chile	3,202	2,424	2,411	2,370	2,925	2,220	3,438	3,547	4,000	2,818
Peru	95	95	95	95	101	113	112	110	110	110
Uruguay	495	379	533	473	583	357	561	725	200	599
Madagascar					2	3		3		
Union of South Africa	749	658	885	815	1,154	1,106	1,309	1,255	1,411	1,784
Australia	730	595	645	741	636	739	806	917	929	900
New Zeland										
WORLD TOTAL	184,665	159,115	175,797	182,452	170,462	205,347	216,231	153,166	179,435	203,255

Estimated production without annual data	103	118	4,868	5,200	23	8	5,033	5,065	5,217	21,594
--	-----	-----	-------	-------	----	---	-------	-------	-------	--------

Bold type: Estimations.

We have made our calculation of world wine production on the basis of data collected from the International Institute of Agriculture (1911-1939). Data missing from the above source has been completed using the following sources: Mitchell (1986), (1992), and (1993); United States Tariff Commission (1939); and Office International du Vin (1928-1939). Data that could not be obtained from any of the above sources has been estimated as an average of the available data on previous and subsequent years. The percentages of estimated production of total world production in each period are: 1.5 (1900-04); 2.8 (1905-09); 3.9 (1910-14); 3.5 (1915-19); 2.4 (1920-24); 1.0 (1925-29); 1.1 (1930-34); 4.9 (1935-38).

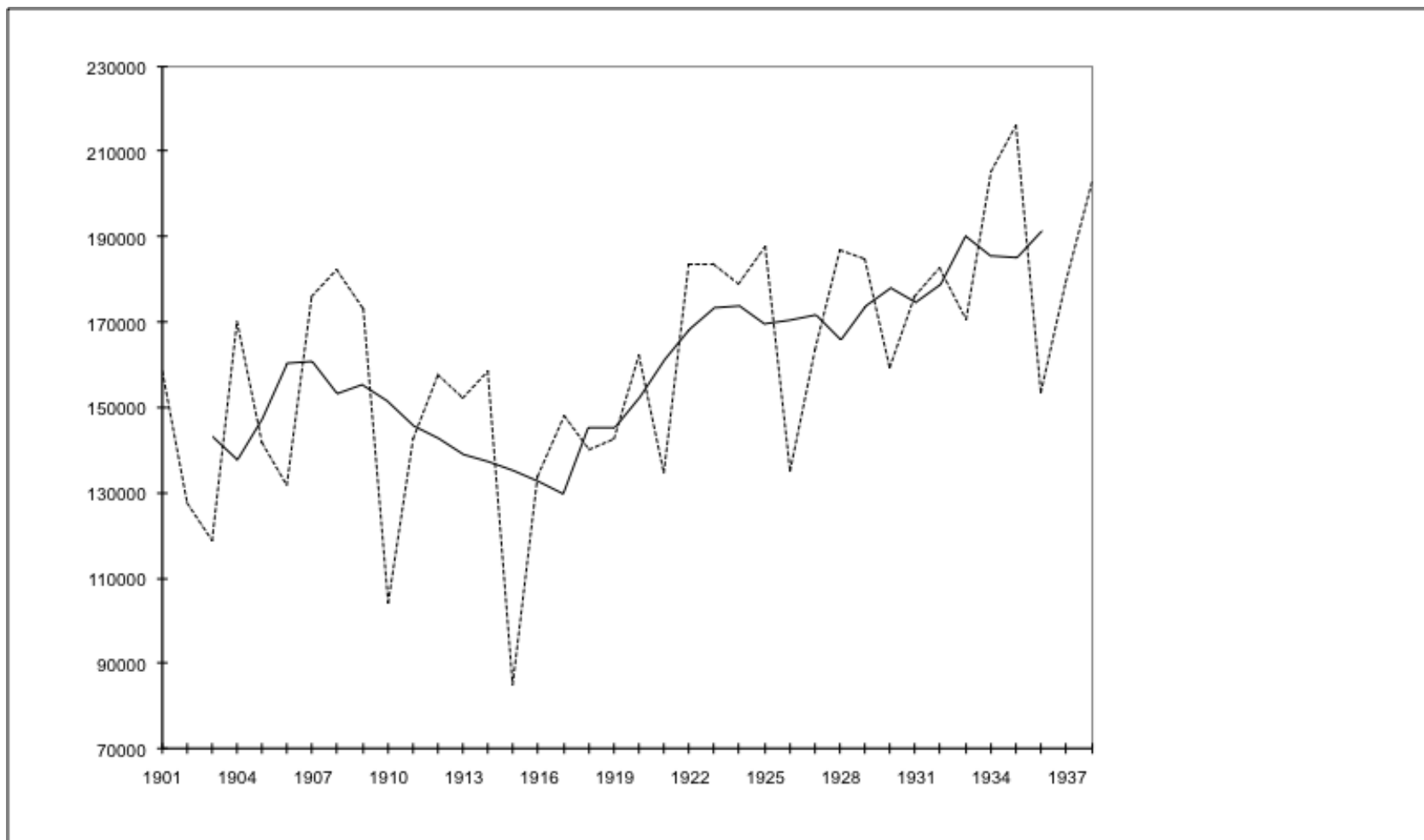
TABLE P.2. WORLD WINE PRODUCTION, 1900-1938 (annual production) (in thousands of hectoliters) (five year averages)

	1900-04	1905-09	1910-14	1915-19	1920-24	1925-29	1930-34	1935-38
France	51,614	58,322	47,524	39,038	61,861	56,845	56,940	58,771
Italy	40,400	45,299	42,271	35,628	41,690	41,193	36,397	38,926
Spain	16,040	14,928	13,638	17,827	20,785	21,215	17,809	14,852
Algeria	6,078	7,657	8,120	6,856	7,834	11,052	17,338	16,838
Portugal	5,131	5,214	4,311	4,710	5,060	5,946	7,864	7,159
Argentina	1,708	3,028	4,597	4,435	5,718	6,098	5,139	7,395
Romania	1,156	1,608	1,295	1,930	4,345	6,384	8,233	9,438
Southern Europe	62,965	67,199	63,157	60,867	69,346	70,684	64,856	64,218
Central/East. Europe	16,675	19,072	12,899	12,907	17,773	19,047	26,054	28,181
North Africa	6,290	8,009	8,436	7,268	8,472	12,056	19,023	19,043
South America	3,577	5,550	7,650	7,085	8,907	10,564	8,996	12,323
World	143,539	160,817	142,805	129,729	168,388	171,457	178,635	188,022

Source: Table P.1.

Southern Europe: Greece, Italy, Portugal and Spain; Central/Eastern Europe: Germany, Austria, Bulgaria, Hungary, Luxemburg, Romania, Czechoslovakia, Switzerland, USSR and Yugoslavia;
North Africa: Algeria, Cirenaica, French Morocco, Tripolitana and Tunisia; South America: Argentina, Chile, Brazil, Uruguay and Peru.

FIGURE P.1. WORLD WINE PRODUCTION, 1901-1938 (thousands of hectoliters) (annual data and moving averages)



Source: Table P.1.

Published: Pinilla and Ayuda (2007): 186.

TABLE P.3. FRENCH AND SPANISH WINE PRODUCTION (thousands of hectoliters)

	FRANCE	SPAIN	ITALY
1830	15,200		
1831	22,000		
1832	26,800		
1833	40,000		
1834	39,600		
1835	26,500		
1836	31,200		
1837	38,000		
1838	24,400		
1839	26,400		
1840	27,700		
1841	33,600		
1842	34,400		
1843	19,200		
1844	29,200		
1845	30,130		
1846	32,400		
1847	54,400		
1848	51,600		
1849	35,555		
1850	45,266		
1851	39,429		
1852	28,636		
1853	22,062		
1854	10,284		
1855	15,175		
1856	21,294		
1857	35,410		
1858	53,919		
1859	29,891		
1860	39,558		
1861	29,738		19,200
1862	37,110		22,460
1863	51,362		19,800
1864	50,653		21,486
1865	68,943		22,696
1866	63,838		23,906
1867	39,128		25,116
1868	52,098		26,326
1869	70,000		27,536
1870	54,535		25,800
1871	56,901		28,500
1872	50,155		26,400
1873	36,000		28,900
1874	69,900		28,095

1875	78,200		28,260
1876	44,300		22,500
1877	56,400		25,440
1878	48,700		26,520
1879	25,800		26,081
1880	29,700		28,643
1881	34,100		25,832
1882	30,900		33,500
1883	36,300		35,934
1884	35,000		28,728
1885	28,800		31,918
1886	25,300		38,227
1887	24,500		34,532
1888	30,300		32,846
1889	23,400		21,757
1890	27,600	24,351	29,457
1891	30,400	24,271	37,177
1892	29,300	n.a.	34,346
1893	50,400	36,599	32,679
1894	39,300	21,790	26,385
1895	26,900	n.a.	24,901
1896	45,000	15,129	29,544
1897	32,600	15,411	29,427
1898	32,500	20,004	34,389
1899	48,300	21,148	34,093
1900	67,900	22,823	36,648
1901	60,074	22,399	46,513
1902	42,257	12,184	43,628
1903	35,240	14,850	36,953
1904	68,883	21,856	43,036
1905	57,857	17,704	30,836
1906	52,241	13,575	31,357
1907	66,070	18,384	56,749
1908	60,799	18,557	54,481
1909	54,640	14,716	65,035
1910	28,723	11,283	32,642
1911	45,044	14,747	47,527
1912	59,531	16,465	49,164
1913	44,337	17,105	58,210
1914	59,981	16,168	47,965
1915	20,443	8,790	21,233
1916	36,068	23,396	43,412
1917	38,273	23,763	54,279
1918	45,160	22,568	40,657
1919	55,248	20,525	38,999
1920	56,759	26,771	47,123
1921	47,903	19,204	35,551
1922	76,781	25,672	38,247
1923	59,911	22,078	57,993
1924	67,949	21,745	48,089
1925	65,065	26,698	48,876
1926	42,612	15,754	40,940
1927	51,210	28,325	39,151
1928	60,321	21,763	52,460

1929	65,016	24,593	46,910
1930	45,638	17,983	40,761
1931	59,331	19,074	40,025
1932	49,820	21,188	49,103
1933	51,766	19,764	35,035
1934	78,144	21,719	32,146
1935	75,810	17,037	47,416
1936	43,555	n.a.	34,110
1937	54,135	n.a.	36,582
1938	61,000	n.a.	41,780

Source: Annuaire Statistique de la France (1938); Grupo de Estudios de Historia Rural (1991); Sommario di Statische Storiche Italiane (1861-1955)

IV. TRADE

TABLE T.1. WORLD WINE EXPORTS (World totals and selection of main exporting countries) (in thousands of hectoliters)

	1909-13	1924-28	1928-32	1934-38
Europe	9,406	9,412	8,129	4,735
N & C Amer	78	1	3	3
S. America	3	33	55	94
Asia	59	83	112	97
Africa	6,951	8,470	11,627	14,127
Oceania	43	99	110	168
WORLD TOTAL	16,541	18,100	20,092	19,223
EUROPE				
Spain	3,106	4,078	3,712	575
France	1,978	1,664	1,075	833
Greece	570	930	850	416
Italy	1,553	1,395	1,081	1,337
Portugal	1,082	1,080	957	822
Romania	0	12	3	4
Total	9,406	9,412	8,129	4,735
N&C AMERICA				
Total	78	1	3	3
S. AMERICA				
Chile	2	24	51	89
Total	3	33	55	94
ASIA				
Cyprus	54	60	69	44
Total	59	83	112	97
AFRICA				
Algeria	6,764	7,939	10,876	12,885
Tunisia	180	515	714	1,114
Total	6,951	8,470	11,627	14,127
OCEANIA				
Australia	41	97	108	167
Total	43	99	110	168
WORLD TOTAL	16,541	18,100	20,092	19,227

	1925	1926	1927	1928	1929	1930	1931	1932	1933	1934	1935	1936	1937	1938
Europe	7,707	8,082	9,899	10,864	8,933	7,695	7,583	5,053	6,115	4,761	4,496	5,223	4,803	4,394
N & C Amer	1	2	2	2	2	2	1	1	0	4	1	1	4	3
S. America	16	13	48	59	43	63	52	62	66	79	54	75	140	123
Asia	76	65	86	67	98	92	120	101	93	79	95	96	112	102
Africa	8,458	10,438	7,614	7,996	9,825	12,249	13,395	14,533	16,026	12,781	13,312	12,650	13,506	18,384
Oceania	63	96	211	81	102	98	133	136	166	141	173	172	177	175
Total	16,321	18,696	17,860	19,069	19,003	20,199	21,284	19,886	22,466	17,845	18,131	18,217	18,742	23,181
EUROPE														
Spain	2,898	2,990	5,078	5,954	3,787	3,490	3,351	1,977	2,505	1,558	1,317
France	1,566	1,837	1,283	1,377	1,388	1,088	820	702	725	725	721	825	862	1,032
Greece	612	1,066	1,388	1,226	1,392	722	445	437	760	409	350	411	461	449
Italy	1,455	1,051	1,036	922	940	1,032	1,672	801	999	993	955	1,437	1,872	1,430
Portugal	1,024	926	771	...	945	818	756	756	768	743	854	879	799	833
Romania	16	7	22	...	4	1	1	1	0	0	3	2	3	12
Total	7,707	8,082	9,899	10,864	8,933	7,695	7,583	5,053	6,115	4,761	4,496	5,223	4,803	4,394
N&C AMERICA														
Total	1	2	2	2	2	2	1	1	0	4	1	1	4	3
S. AMERICA														
Chile	6	5	44	55	38	57	46	59	63	72	50	71	133	119
Total	16	13	48	59	43	63	52	62	66	79	54	75	140	123
ASIA														
Cyprus	53	43	66	...	69	62	92	67	52	35	54	59	73	...
Total	76	65	86	67	98	92	120	101	93	79	95	96	112	102
AFRICA														
Algeria	7,796	9,730	7,266	7,459	9,274	11,247	12,935	13,492	15,250	11,998	12,255	11,006	12,284	16,883
Tunisia	653	699	329	518	522	971	418	1,002	707	712	980	1,498	1,095	1,285
Total	8,458	10,438	7,614	7,996	9,825	12,249	13,395	14,533	16,026	12,781	13,312	12,650	13,506	18,384
OCEANIA														
Australia	62	93	208	79	99	97	132	135	166	141	173	172	177	175
Total	63	96	211	81	102	98	133	136	166	141	173	172	177	175

WORLD TOTAL	16,322	18,697	17,862	19,069	19,057	20,275	21,368	19,947	22,523	17,854	18,134	18,219	18,744	23,182
--------------------	--------	--------	--------	--------	--------	--------	--------	--------	--------	--------	--------	--------	--------	--------

Source: Export averages made by the International Institute of Agriculture (1911-1938) with the exception of the last one period which has been calculated by ourselves with the annual data.

TABLE T.2. WORLD WINE IMPORTS (World totals and selection of main importing countries) (in thousands of hectoliters)

	1909-13	1924-28	1928-32	1934-38
Europe	13,079	15,375	17,696	16,823
N &C Amer	770	279	212	267
S. America	1,526	487	314	143
Asia	181	210	198	175
Africa	542	890	992	915
Oceania	80	38	32	31
WORLD TOTAL	16,178	17,279	19,444	18,353
EUROPE				
Germany	1,103	950	844	937
Austria	41	392	347	61
Bel-Luxemb.	358	562	389	344
France	8,237	10,565	13,603	14,343
U.K.	574	778	635	745
Switzerland	1,561	1,364	1,187	942
Total	13,079	15,375	17,696	16,823
N&C AMERICA				
Canada	41	41	48	22
Cuba	219	123	58	13
USA	331	2	1	131
Martinique	13	12	12	20
Mexico	96	47	37	28
Total	770	279	212	267
S. AMERICA				
Argentina	589	62	47	11
Brazil	689	287	167	82

Venezuela	n.a.	32	27	12
Total	1,526	487	314	143
ASIA				
Dutch Indies	20	20	22	19
Indochina	82	89	85	70
Total	181	210	198	175
AFRICA				
Western Africa	41	103	96	96
Egypt	120	150	143	60
Algeria	24	22	31	35
Angola	49	72	78	51
French Morocco	44	229	218	19
Mozambique	79	45	73	96
Total	542	890	992	915
OCEANIA				
New Caledonie	31	19	17	13
Total	80	38	32	31
WORLD TOTAL	16,178	17,279	19,444	18,354

	1,925	1,926	1,927	1,928	1,929	1,930	1,931	1,932	1,933	1,934	1,935	1,936	1,937	1,938
Europe	14,058	15,697	15,680	16,905	16,978	17,440	19,615	17,385	20,981	16,129	15,941	15,701	16,186	20,158
N &C Amer	292	288	259	273	232	162	174	154	175	299	250	265	274	247
S. America	473	550	452	247	442	338	187	117	130	111	128	130	147	200
Asia	190	230	186	206	235	184	156	153	151	167	170	181	190	167
Africa	888	1,013	915	845	967	954	836	750	768	680	782	1,118	1,016	979
Oceania	38	43	36	35	40	36	26	21	22	30	28	30	32	33
WORLD TOTAL	15,939	17,821	17,528	18,511	18,894	19,114	20,994	18,580	22,227	17,416	17,299	17,425	17,845	21,784
EUROPE														
Germany	1,121	592	1,159	1,167	1,028	730	610	640	640	842	828	860	982	1,172
Austria	320	328	429	482	425	373	282	171	65	49	65	67	59	66
Bel-Luxemb.	581	635	433	416	449	410	350	287	274	253	325	338	410	394
France	9,005	11,110	10,841	12,209	12,406	13,354	15,932	14,057	13,603	17,537	12,745	12,627	12,488	16,317
U.K.	808	819	842	620	696	629	668	565	664	661	731	793	818	724
Switzerland	1,455	1,455	1,206	1,238	1,170	1,164	1,157	1,199	1,378	1,144	869	813	928	957
Total	14,057	15,694	15,680	16,905	16,978	17,440	19,615	17,385	20,981	16,129	15,941	15,700	16,186	20,158
N&C AMERICA														
Canada	31	38	52	54	61	51	42	32	25	24	24	21	23	20
Cuba	136	122	106	n.a.	72	58	n.a.	n.a.	14	21	27	16	n.a.	n.a.
USA	3	2	1	2	1	2	1	1	52	142	104	137	144	130
Martinique	12	15	9	12	11	8	n.a.	n.a.	21	29	26	25	18	n.a.
Mexico	52	50	39	n.a.	45	1	28	27	27	40	30	25	29	17
Total	292	288	259	273	232	162	174	154	175	299	250	265	274	247
S. AMERICA														
Argentina	62	60	67	n.a.	61	57	35	18	15	10	9	10	14	13
Brazil	275	328	248	86	247	161	70	52	75	65	68	69	77	131
Venezuela	33	43	31	n.a.	34	33	22	13	10	7	20	14	22	n.a.
Total	473	550	452	247	442	338	187	117	130	111	128	130	147	200
ASIA														
Dutch Indies	19	22	23	19	28	24	18	14	16	17	16	17	23	20
Indochina	78	107	80	101	99	76	75	75	69	77	79	96	97	n.a.
Total	190	230	186	206	235	184	156	153	151	167	170	181	190	167
AFRICA														

Western Africa	104	148	90	89	106	116	78	89	74	68	84	107	109	111
Egypt	147	146	159	168	190	147	103	99	70	48	62	65	67	58
Algeria	18	26	33	20	35	32	29	32	74	58	26	46	21	23
Angola	71	67	60	72	88	84	70	74	76	73	67	62	54	n.a.
French Morocco	237	274	255	180	225	263	263	156	74	50	14	12	11	10
Mozambique	35	31	31	52	66	75	77	87	88	87	90	98	97	109
Total	888	1,013	915	845	967	954	836	750	768	680	782	1,118	1,016	979
OCEANIA														
New Caledonie	17	22	20	18	22	18	16	12	13	13	12	12	13	14
Total	38	43	36	35	40	36	26	21	22	30	28	30	32	33
WORLD TOTAL	15,939	17,821	17,528	18,511	18,894	19,114	20,994	18,580	22,227	17,416	17,299	17,425	17,845	21,784

Source: Import averages made by the International Institute of Agriculture (1911-1938) with the exception of the last one period which has been calculated by ourselves with the annual data.

TABLE T.3. WORLD TRADE IN WINE, 1909-1938 (five year averages) (in thousands of hectoliters)

WINE IMPORTS	Thousands of hectoliters				Percentages of total world imports			
Germany	1,103	950	844	937	6.8	5.5	4.3	5.1
France	8,237	10,565	13,603	14,343	50.9	61.1	70.0	78.1
U.K.	574	778	635	745	3.5	4.5	3.3	4.1
Switzerland	1,561	1,364	1,187	942	9.6	7.9	6.1	5.1
EUROPE	13,079	15,375	17,696	16,823	80.8	89.0	91.0	91.7
USA	331	2	1	131	2.0	0.0	0.0	0.7
N&C AMERICA	770	279	212	267	4.8	1.6	1.1	1.5
Argentina	589	62	47	11	3.6	0.4	0.2	0.1
Brazil	689	287	167	82	4.3	1.7	0.9	0.4
S. AMERICA	1,526	487	314	143	9.4	2.8	1.6	0.8
ASIA	181	210	198	175	1.1	1.2	1.0	1.0
AFRICA	542	890	992	915	3.4	5.2	5.1	5.0
OCEANIA	80	38	32	31	0.5	0.2	0.2	0.2
WORLD TOTAL	16,178	17,279	19,444	18,354	100.0	100.0	100.0	100.0

WINE EXPORTS	Thousands of hectoliters				Percentages of total world exports			
Spain	3,106	4,078	3,712	575	18.8	22.5	18.5	3.0
France	1,978	1,664	1,075	833	12.0	9.2	5.4	4.3
Greece	570	930	850	416	3.4	5.1	4.2	2.2
Italy	1,553	1,395	1,081	1,337	9.4	7.7	5.4	7.0
Portugal	1,082	1,080	957	822	6.5	6.0	4.8	4.3
EUROPE	9,406	9,412	8,129	4,735	56.9	52.0	40.5	24.6
N&C AMERICA	78	1	3	3	0.5	0.0	0.0	0.0
S. AMERICA	3	33	55	94	0.0	0.2	0.3	0.5
ASIA	59	83	112	97	0.4	0.5	0.6	0.5
Algeria	6,764	7,939	10,876	12,885	40.9	43.9	54.1	67.0
Tunisia	180	515	714	1,114	1.1	2.8	3.6	5.8
AFRICA	6,951	8,470	11,627	14,127	42.0	46.8	57.9	73.5
Australia	43	99	110	168	0.3	0.5	0.5	0.9
OCEANIA	43	99	110	168	0.3	0.5	0.5	0.9
WORLD TOTAL	16,541	18,100	20,092	19,227	100.0	100.0	100.0	100.0

Source: Import and export averages made by the International Institute of Agriculture (1911-1939) with the exception of the last one period which has been calculated by ourselves with the annual data.

Published: Pinilla and Ayuda (2007): 192-193

TABLE T.4. WINE EXPORTS. FRANCE, ITALY AND SPAIN (in hectoliters)

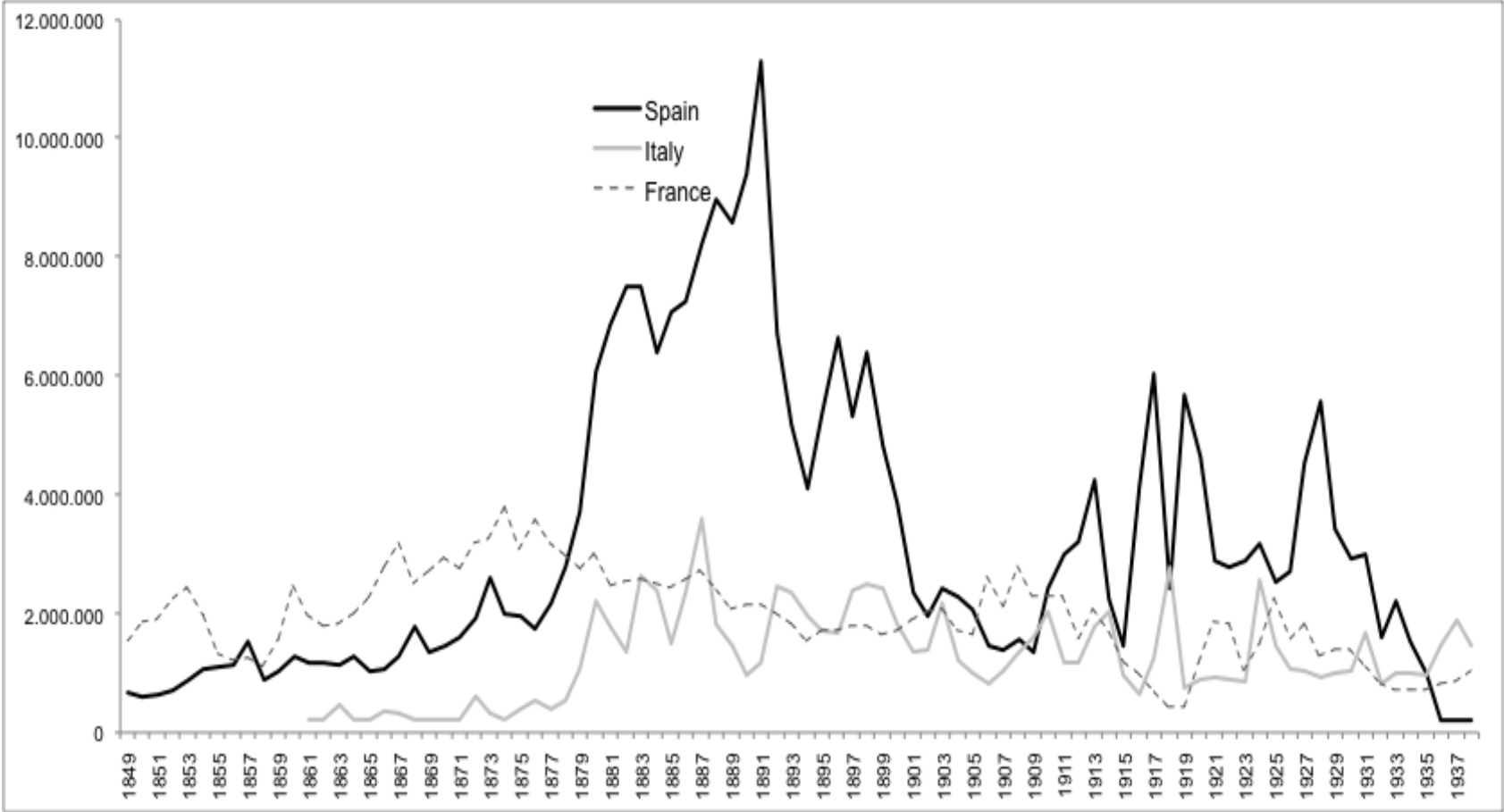
	Spain	Italy	France (+)
1849	679,395		1,533,339
1850	590,280		1,852,546
1851	650,497		1,884,450
1852	712,063		2,252,159
1853	876,984		2,419,604
1854	1,075,465		1,956,184
1855	1,082,454		1,315,161
1856	1,149,386		1,194,901
1857	1,542,540		1,249,735
1858	868,410		1,098,102
1859	1,020,266		1,580,299
1860	1,281,920		2,452,033
1861	1,177,478	255,000	1,949,979
1862	1,154,384	217,000	1,781,176
1863	1,137,331	468,000	1,811,723
1864	1,288,493	236,000	1,979,768
1865	1,031,424	275,000	2,237,110
1866	1,062,065	359,000	2,768,003
1867	1,269,289	299,000	3,162,773
1868	1,764,464	241,000	2,495,894
1869	1,360,290	287,000	2,703,994
1870	1,442,422	240,000	2,944,354
1871	1,613,626	243,000	2,747,103
1872	1,934,314	609,000	3,173,802
1873	2,607,663	309,000	3,240,787
1874	2,010,324	272,000	3,804,986
1875	1,968,869	363,000	3,058,756
1876	1,746,201	507,000	3,568,185
1877	2,168,739	363,000	3,174,910
1878	2,792,625	537,000	2,960,685
1879	3,699,127	1,077,000	2,765,754
1880	6,079,489	2,206,000	3,001,924
1881	6,872,264	1,760,000	2,447,900
1882	7,514,059	1,332,000	2,535,630
1883	7,523,958	2,629,000	2,579,853
1884	6,400,393	2,381,000	2,500,112
1885	7,078,349	1,481,000	2,438,149
1886	7,266,223	2,354,000	2,572,710
1887	8,233,639	3,603,000	2,721,759
1888	8,979,106	1,829,000	2,373,896
1889	8,589,191	1,439,000	2,082,029
1890	9,418,008	936,000	2,130,197
1891	11,306,772	1,179,000	2,121,926
1892	6,736,298	2,449,000	2,002,379
1893	5,164,989	2,363,000	1,813,474
1894	4,125,704	1,943,000	1,534,610
1895	5,348,174	1,711,000	1,724,468
1896	6,664,787	1,656,000	1,696,743
1897	5,343,055	2,396,000	1,783,825
1898	6,409,359	2,503,000	1,774,862
1899	4,841,675	2,430,000	1,636,209
1900	3,868,571	1,827,000	1,716,520

1901	2,338,995	1,335,000	1,904,831
1902	1,967,768	1,389,000	2,022,321
1903	2,430,734	2,163,000	2,051,588
1904	2,285,390	1,211,000	1,725,849
1905	2,072,200	987,000	1,642,568
1906	1,462,846	814,000	2,605,316
1907	1,386,981	1,041,000	2,110,078
1908	1,567,522	1,364,000	2,786,427
1909	1,346,085	1,588,000	2,273,328
1910	2,423,347	2,033,000	2,280,049
1911	2,987,268	1,179,000	2,291,744
1912	3,202,929	1,177,000	1,568,871
1913	4,243,218	1,787,000	2,058,146
1914	2,252,920	2,045,000	1,658,977
1915	1,443,843	961,000	1,155,034
1916	4,159,287	623,000	1,002,820
1917	6,037,145	1,230,000	688,618
1918	2,441,431	2,780,000	482,173
1919	5,685,258	725,000	434,266
1920	4,635,792	874,000	1,179,753
1921	2,887,441	913,000	1,870,388
1922	2,789,559	891,000	1,800,846
1923	2,898,887	830,000	1,033,538
1924	3,180,094	2,559,000	1,502,694
1925	2,544,783	1,455,000	2,250,493
1926	2,697,780	1,051,000	1,561,231
1927	4,534,402	1,036,000	1,834,224
1928	5,580,118	922,000	1,279,295
1929	3,439,903	974,000	1,374,816
1930	2,941,858	1,032,000	1,382,229
1931	2,995,503	1,672,000	1,087,995
1932	1,618,474	803,000	818,176
1933	2,208,186	999,000	700,289
1934	1,546,448	993,000	717,476
1935	997,493	944,000	721,191
1936	223,991	1,438,000	821,900
1937	245,179	1,872,000	859,900
1938	206,366	1,441,000	1,028,600

(*) Including Champagne and liquor wines

Source: Direction General des Douanes (1850-1938) (France); Estadísticas del Comercio Exterior de España (Spain); Sommario di Statistiche Storiche Italiane (Italy)

FIGURE T.1. WINE EXPORTS. FRANCE, ITALY AND SPAIN (in hectoliters)



Source: Table T.4. Published in: Fernández and Pinilla (2014)

TABLE T.5. BRITISH WINE IMPORTS, 1855-1934 (gallons and pounds)

	Gallons	£
1854	10,875,855	3,616,369
1855	8,946,766	3,072,747
1856	9,481,880	3,740,767
1857	10,336,845	4,080,744
1858	5,791,636	2,040,552
1859	8,195,513	2,781,040
1860	12,475,001	4,200,929
1861	11,052,436	3,862,233
1862	11,960,676	3,649,067
1863	14,185,195	4,497,343
1864	15,451,593	5,002,884
1865	14,269,752	3,914,196
1866	15,321,029	4,733,745
1867	15,442,581	4,835,251
1868	16,953,429	5,440,991
1869	17,184,330	5,265,600
1870	17,774,782	4,817,294
1871	18,224,900	7,072,099
1872	19,660,127	7,718,848
1873	21,682,356	8,267,326
1874	18,234,972	6,863,465
1875	18,429,305	4,801,015
1876	19,950,723	6,993,399
1877	19,568,807	7,138,966
1878	16,452,538	5,988,685
1879	15,162,857	5,365,250
1880	17,385,496	6,465,944
1881	16,297,033	5,651,107
1882	15,715,813	5,458,923
1883	15,559,795	5,451,953
1884	15,106,271	5,341,117
1885	14,629,738	5,126,392
1886	14,552,864	5,115,381
1887	15,383,641	5,466,266
1888	14,745,161	5,385,032
1889	15,900,749	5,905,473
1890	16,194,107	5,886,867
1891	16,782,631	5,984,701
1892	17,319,477	6,019,559
1893	14,675,201	5,302,202
1894	14,368,621	5,018,108
1895	15,864,323	5,448,088
1896	16,695,560	5,946,296
1897	17,559,284	6,433,934
1898	18,139,652	6,575,691
1899	17,387,744	5,630,406
1900	16,803,829	5,192,909
1901	16,546,206	4,931,335
1902	16,430,414	4,941,716
1903	14,710,588	4,697,598

1904	12,347,194	3,822,206
1905	12,731,050	4,072,199
1906	13,103,304	4,214,878
1907	13,178,733	4,010,333
1908	11,877,155	3,502,702
1909	12,334,473	3,746,489
1910	13,732,640	4,248,814
1911	12,570,328	4,159,756
1912	12,191,218	4,287,426
1913	12,332,912	4,078,143
1914	11,477,362	3,630,313
1915	11,154,806	2,917,276
1916	12,959,721	3,511,822
1917	6,696,558	2,403,461
1918	13,155,760	7,250,192
1919	25,252,387	18,167,077
1920	17,735,418	12,773,411
1921	9,533,058	5,317,975
1922	12,279,370	5,631,691
1923	13,237,487	5,742,721
1924	17,650,859	6,900,653
1925	17,767,293	6,994,623
1926	17,976,007	7,307,343
1927	18,526,222	7,032,320
1928	13,644,256	5,739,999
1929	15,240,111	6,198,889
1930	13,838,658	5,294,198
1931	14,705,137	5,226,339
1932	12,419,240	3,725,778
1933	14,602,882	4,722,024
1934	14,528,395	5,004,896
1935	16,086,229	5,541,795

Source: Statistical Abstract for the United Kingdom

Published in: Pinilla and Ayuda (2008)

TABLE T.6. FRENCH EXPORTS OF TABLE WINE, 1855-1938 (commerce general)

	In casks		In bottles	
	from the Gironde	from other regions	from the Gironde	from other regions
	Hl.	Hl.	Hl.	Hl.
1855	326,931	735,170	58,739	84,647
1856	359,698	742,203	66,725	90,787
1857	371,342	593,437	57,476	85,311
1858	458,761	1,019,290	45,065	64,541
1859	643,921	1,668,548	62,296	69,164
1860	556,179	1,277,243	65,944	70,527
1861	509,410	1,181,480	49,302	49,125
1862	550,404	1,164,160	49,217	54,382
1863	635,215	1,223,152	62,074	69,464
1864	684,376	1,430,257	67,006	69,550
1865	978,830	1,674,404	58,494	69,329
1866	1,081,662	1,923,809	92,383	81,074
1867	1,010,809	1,348,311	69,145	78,058
1868	1,092,566	1,466,122	67,627	93,054
1869	1,229,845	1,530,542	93,862	107,593
1870	1,176,405	1,433,695	86,698	68,234
1871	1,361,780	1,664,112	87,635	81,222
1872	1,343,218	1,735,052	109,026	117,077
1873	1,326,188	2,332,013	109,783	123,418
1874	1,113,444	1,867,351	106,363	113,272
1875	1,413,284	2,008,261	106,670	110,730
1876	1,163,569	1,887,733	101,084	104,588
1877	1,130,654	1,683,799	97,955	126,333
1878	946,342	1,611,384	91,438	212,958
1879	1,334,199	1,491,222	103,635	205,769
1880	1,033,393	1,218,629	106,844	251,037
1881	1,060,917	1,324,913	104,658	222,576
1882	1,090,902	1,376,882	95,134	229,465
1883	1,000,245	1,272,513	100,447	241,746
1884	1,130,659	1,119,032	96,195	231,445
1885	1,058,797	1,277,034	96,223	220,988
1886	1,160,257	1,248,511	100,835	214,927
1887	1,218,830	1,028,097	83,555	229,557
1888	1,040,689	1,096,876	72,388	238,326
1889	1,101,832	1,117,291	79,441	235,858
1890	967,549	1,122,367	81,269	256,272
1891	787,854	1,247,317	73,389	266,444
1892	769,378	1,195,195	63,938	231,862
1893	678,234	1,090,384	52,956	222,587
1894	872,027	1,197,432	47,566	59,331
1895	651,757	1,460,531	46,782	65,327
1896	637,842	1,539,460	58,735	62,184
1897	665,814	1,481,881	55,779	55,531
1898	567,883	1,467,122	43,082	50,005

1899	635,535	1,530,482		47,207	46,539
1900	695,315	1,455,539		40,127	48,421
1901	677,226	1,499,263		43,708	49,973
1902	664,591	1,530,778		56,799	41,499
1903	639,483	1,264,441		45,481	39,795
1904	594,483	1,285,785		42,091	39,967
1905	741,677	2,070,009		61,964	48,916
1906	693,078	1,315,746		54,354	48,824
1907	816,066	1,804,719		56,841	47,450
1908	698,755	1,649,901		40,376	42,954
1909	697,220	1,528,749		43,350	43,406
1910	842,503	1,621,216		41,963	47,885
1911	552,324	1,543,493		40,470	46,317
1912	727,442	1,896,293		41,135	47,182
1913	545,731	1,999,495		40,767	48,724
1914	398,853	1,123,766		33,523	34,351
1915	207,780	1,186,709		20,391	21,147
1916	212,564	976,220		27,862	26,602
1917	102,284	990,748		18,396	26,662
1918	155,292	787,448		20,267	20,180
1919	444,672	1,253,340		58,685	42,931
1920	338,098	1,777,887		71,957	84,146
1921	229,179	2,140,069		35,202	53,299
1922	223,317	1,379,425		29,091	39,560
1923	326,592	1,566,152		37,720	49,037
1924	692,745	1,808,177		60,061	65,274
1925	400,058	1,562,314		44,683	37,548
1926	500,602	1,785,169		56,779	49,730
1927	431,290	508,048		47,410	38,362
1928	433,164	588,050		50,083	35,605
1929	466,195	556,575		50,918	35,972
1930	377,749	395,139		37,101	30,946
1931	279,569	295,465		31,345	19,785
1932	217,807	312,687		21,274	14,346
1933	182,820	352,246		21,855	15,988
1934	173,437	343,145		33,122	22,047
1935	205,974	338,271		18,621	14,053
1936	240,283	360,336		26,060	16,933
1937	263,802	318,148		40,700	23,498
1938	278,388	482,038		38,825	27,842

Source: Direction General des Douanes (1850-1938)

(1) This data relates to the "Commerce General", and includes French re-exports. The only significant re-exports were the Spanish wines that crossed France on their way to Switzerland. From approximately 1890 these re-exports oscillated between 100 and 500 thousand hectoliters.

(2) Until 1894, the French statistics mixed bottled wine from "other regions" with champagne and sparkling wines, but from 1894 the data is differentiated. To maintain the homogeneity of the series, we have subtracted from the pre-1894 data the percentage of champagne and sparkling wine that was exported, which has been estimated using the data from 1895 to 1899.

Published in: Ayuda, Aparicio and Pinilla (1998)

**TABLE T.7. FRENCH IMPORTS OF TABLE WINE IN CASKS, 1847-1938
(commerce general)**

	SPAIN	ALGERIA	ITALY	TOTAL
	Hl.	Hl.	Hl.	Hl.
1847	2,622		429	4,399
1848	1,614		10	2,625
1849	1,575		8	2,843
1850	1,943		23	3,779
1851	1,709		29	3,827
1852	5,386		529	8,506
1853	22,142		4,366	26,013
1854	154,158		2,765	182,552
1855	355,764		26,585	400,881
1856	242,509		14,352	327,204
1857	541,110		47,041	615,808
1858	84,788		11,349	106,125
1859	92,918		12,859	121,521
1860	137,054		21,187	177,061
1861	204,964		17,615	238,676
1862	82,705		10,622	106,282
1863	53,064		17,377	87,137
1864	78,955		6,651	101,176
1865	62,804		3,831	82,437
1866	44,045		4,085	66,978
1867	144,065		9,569	175,871
1868	342,982		7,891	370,043
1869	305,726		7,043	349,908
1870	86,830		15,067	116,141
1871	69,811		21,653	126,113
1872	218,376		307,325	549,886
1873	607,639		54,822	701,108
1874	659,683		68,631	770,511
1875	166,315		70,668	300,136
1876	316,768		278,850	694,307
1877	479,559	2,178	148,784	733,588
1878	1,381,625	1,071	190,888	1,616,410
1879	2,276,899	5,415	569,163	2,931,861
1880	5,049,149	17,049	1,670,002	7,206,919
1881	5,738,115	10,868	1,604,304	7,895,444
1882	6,253,950	9,236	845,857	7,569,313
1883	6,200,080	83,878	1,959,938	8,890,192
1884	5,160,549	190,076	2,211,008	8,122,974
1885	5,649,361	324,289	889,190	8,112,196
1886	6,384,017	490,393	1,963,773	11,044,798
1887	7,244,916	765,199	2,778,825	12,313,091
1888	7,913,381	1,234,319	1,260,800	12,305,773
1889	7,008,629	1,591,952	337,263	10,630,444
1890	7,825,317	1,971,347	99,665	10,815,314
1891	9,604,451	1,860,950	138,186	12,235,330
1892	5,651,701	2,840,632	439,957	9,495,867

1893	3,829,352	1,828,289	236,269	6,206,076
1894	2,571,712	2,019,867	80,226	4,853,765
1895	3,517,528	2,902,054	66,785	6,756,717
1896	5,723,663	3,136,669	65,664	9,214,168
1897	3,879,924	3,600,321	56,336	7,724,326
1898	5,336,950	3,293,818	69,269	8,859,292
1899	3,842,702	4,676,047	99,981	8,820,653
1900	2,700,638	2,351,421	137,908	5,399,497
1901	1,078,848	2,648,962	48,188	3,835,043
1902	769,880	3,913,076	47,260	4,770,844
1903	1,302,011	4,782,785	211,588	6,485,234
1904	1,262,177	5,232,849	138,283	7,079,120
1905	631,816	4,823,664	52,746	5,560,754
1906	317,971	5,404,918	26,031	5,795,655
1907	199,520	5,719,835	24,098	5,989,253
1908	417,358	6,629,872	41,418	7,172,782
1909	331,410	5,865,523	39,203	6,363,517
1910	1,307,308	6,666,737	42,922	8,407,194
1911	2,080,149	7,317,900	34,200	9,948,121
1912	1,831,597	7,627,663	19,789	9,976,457
1913	3,296,351	4,664,254	190,478	8,633,695
1914	1,513,957	5,012,080	446,644	7,305,345
1915	626,591	8,005,681	9,262	8,857,182
1916	3,252,282	4,562,411	7,444	9,105,769
1917	5,069,168	4,848,743	272,747	10,945,010
1918	1,750,610	2,248,169	1,816,336	6,482,421
1919	2,684,456	2,795,746	234,202	6,745,595
1920	3,414,351	1,958,324	50,883	6,044,710
1921	1,752,561	4,162,700	27,442	6,190,092
1922	2,184,441	4,163,011	266,380	8,691,994
1923	2,217,474	5,405,139	82,322	8,700,478
1924	2,227,944	6,115,411	842,331	9,747,868
1925	1,268,858	7,124,692	51,700	9,214,634
1926	1,454,072	8,780,444	34,150	11,344,283
1927	2,739,892	6,998,333	76,511	10,523,319
1928	3,606,712	6,883,500	18,137	11,771,667
1929	1,728,268	9,220,938	22,775	11,800,509
1930	1,477,186	10,009,714	137,996	12,523,834
1931	2,058,496	11,858,265	845,860	15,311,381
1932	540,228	11,938,652	14,322	13,285,657
1933	1,246,558	14,531,903	36,272	16,856,387
1934	253,189	11,387,333	16,485	12,219,753
1935	110,182	11,207,178	6,840	12,022,133
1936	99,620	10,476,340	14,976	11,704,507
1937	20,497	10,885,781	39,770	11,929,658
1938	6,042	14,678,921	6,368	15,699,203

Source: Direction General des Douanes (1850-1938)

(1) This data relates to the "Commerce General", and includes French re-exports. The Orly significant re-exports were the Spanish wines that crossed France on their way to Switzerland. From approximately 1890 these re-exports oscillated between 100 and 500 thousand hectoliters.

Published in: Ayuda, Aparicio and Pinilla (1998)

TABLE T.8. FRENCH IMPORTS OF ORDINARY WINES (in casks)

	Origin of imports (%)			% over French Production
	Spain	Algeria	Others	
1847-49	32.3	0.0	67.7	0.0
1850-54	83.4	0.0	16.6	0.1
1855-59	85.0	0.0	15.0	1.0
1860-64	81.0	0.0	19.0	0.3
1865-69	87.0	0.0	13.0	0.3
1870-74	69.8	0.0	30.2	0.7
1875-79	73.4	0.1	26.4	2.3
1880-84	72.0	0.8	27.2	23.6
1885-89	63.4	8.2	28.4	40.5
1890-94	67.5	25.3	7.3	23.5
1895-99	50.5	46.6	3.0	20.5
1900-04	19.7	75.8	4.4	9.4
1905-09	0.8	97.7	1.5	10.4
1910-14	15.0	78.4	6.6	16.8
1915-19	26.4	58.3	15.3	19.8
1920-24	23.4	61.1	15.5	11.3
1925-29	17.5	73.7	8.8	18.6
1930-34	7.9	85.2	6.9	24.7
1935-38	0.5	92.1	7.5	21.9

Source: Direction General des Douanes (1850-1938).

Published in: Pinilla and Ayuda (2002)

**TABLE T.9. FRENCH IMPORTS OF TABLE WINE, 1847-1938 (in bottles)
(hectoliters) (commerce general)**

1847	369
1848	518
1849	376
1850	562
1851	602
1852	894
1853	756
1854	1,203
1855	2,636
1856	3,092
1857	3,104
1858	2,224
1859	2,141
1860	2,494
1861	1,675
1862	1,428
1863	2,005
1864	2,198
1865	2,081
1866	2,597
1867	3,205
1868	3,507
1869	3,249
1870	2,344
1871	1,747
1872	2,792
1873	2,558
1874	3,612
1875	3,647
1876	3,009
1877	2,833
1878	3,903
1879	3,706
1880	4,619
1881	4,626
1882	4,801
1883	5,315
1884	7,132
1885	5,094
1886	5,457
1887	7,851
1888	7,728
1889	5,531
1890	7,490
1891	6,003
1892	7,113
1893	6,007
1894	6,624

1895	6,042
1896	7,687
1897	6,198
1898	6,867
1899	7,357
1900	8,177
1901	5,440
1902	5,372
1903	6,806
1904	5,928
1905	7,403
1906	8,342
1907	8,061
1908	9,121
1909	9,616
1910	9,217
1911	9,077
1912	8,608
1913	10,945
1914	10,996
1915	4,538
1916	3,811
1917	7,986
1918	12,140
1919	10,339
1920	15,269
1921	7,323
1922	13,352
1923	14,874
1924	17,503
1925	14,876
1926	12,875
1927	7,411
1928	19,254
1929	6,427
1930	8,487
1931	8,550
1932	2,085
1933	3,181
1934	3,137
1935	3,547
1936	4,244
1937	6,336
1938	4,994

Source: Direction General des Douannes (1850-1938)

(1) This data relates to the "Commerce General", and includes French re-exports.

**TABLE T.10. FRENCH IMPORTS OF LIQUOR WINE , 1847-1938 (in casks)
(commerce general)**

	SPAIN	ALGERIA	TOTAL
	Hl.	Hl.	Hl.
1847	1,859		3,478
1848	2,193		2,908
1849	1,405		2,161
1850	2,457		4,228
1851	1,898		3,607
1852	1,281		3,497
1853	1,923		4,485
1854	4,019		8,578
1855	9,546		19,891
1856	8,498		16,375
1857	8,049		15,500
1858	4,752		13,720
1859	6,961		19,566
1860	7,524		24,860
1861	6,749		22,862
1862	7,840		21,697
1863	12,441		26,153
1864	11,898		28,934
1865	15,794		29,575
1866	20,622		34,476
1867	22,565		38,221
1868	25,070		42,713
1869	33,149		52,022
1870	21,077		34,004
1871	29,280		47,561
1872	34,886		56,054
1873	37,122		55,844
1874	34,618		55,973
1875	36,851		59,981
1876	43,581		73,910
1877	42,889		75,101
1878	37,753		93,789
1879	74,629		120,493
1880	80,576		136,165
1881	94,058		150,780
1882	111,481		167,325
1883	114,886		168,183
1884	96,087		147,168
1885	111,494		163,291
1886	118,109		170,336
1887	112,601		165,437
1888	146,286		191,141
1889	187,042		247,789
1890	227,457		329,002
1891	323,689		425,535
1892	214,987		316,593

1893	176,828		257,434
1894	181,957		283,037
1895	208,234		334,976
1896	238,989		446,719
1897	215,010	183,884	532,892
1898	212,223	97,546	467,257
1899	193,580	104,532	422,006
1900	189,450	104,551	435,295
1901	138,924	150,290	383,376
1902	138,321	3,863	207,483
1903	147,619	717	272,894
1904	115,088	1,441	235,613
1905	134,595	13,019	218,122
1906	165,772	22,324	260,452
1907	119,299	23,991	226,891
1908	170,487	13,686	247,769
1909	152,825	8,363	256,959
1910	151,181	8,966	285,063
1911	216,698	2,472	343,678
1912	96,301	1,789	282,585
1913	161,203	1,980	348,090
1914	107,392	5,338	269,188
1915	63,198	680	172,060
1916	137,525	521	242,839
1917	178,304	0	242,000
1918	74,414	0	150,590
1919	51,173	125	184,584
1920	23,711	6,602	108,869
1921	40,316	1,037	73,131
1922	35,313	4,002	138,379
1923	39,366	303	152,030
1924	69,204	501	116,529
1925	79,080	300	166,916
1926	66,601	919	140,273
1927	4,825	4,755	37,313
1928	32,218	65,737	194,643
1929	8,754	113,736	256,554
1930	13,695	134,093	298,795
1931	20,992	124,384	311,807
1932	9,726	141,885	364,679
1933	8,978	138,219	313,258
1934	5,993	129,638	276,819
1935	3,203	124,751	339,915
1936	2,249	135,101	338,846
1937	0	98,739	311,879
1938	0	229,845	407,236

Source: Direction General des Douanes (1850-1938)

(1) This data relates to the "Commerce General", and includes French re-exports.

TABLE T.11. FRENCH DUTIES ON ORDINARY WINE

	Ordinary wine in casks	
	Duties as a % of imports	Specif Duties Constant Francs/Hl.
1877	9.7	2.8
1878	10.6	3.1
1879	9.2	3.2
1880	8.3	3.1
1881	7.8	3.2
1882	6.5	2.4
1883	5.0	1.9
1884	4.9	2.1
1885	4.3	2.1
1886	4.3	2.2
1887	5.8	2.4
1888	5.9	2.3
1889	6.4	2.4
1890	6.9	2.2
1891	16.9	2.4
1892	14.3	4.8
1893	37.1	11.9
1894	36.8	12.7
1895	28.6	10.9
1896	28.2	11.1
1897	27.0	11.2
1898	26.2	10.5
1899	45.7	14.8
1900	43.6	14.2
1901	45.3	15.4
1902	45.1	15.5
1903	42.3	14.2
1904	42.0	14.4
1905	45.8	14.0
1906	38.0	13.8
1907	34.9	12.0
1908	44.8	14.3
1909	36.4	13.5
1910	35.0	12.2
1911	34.7	11.6
1912	34.9	11.1
1913	34.7	11.3
1915	34.6	8.2
1916	24.1	6.0
1917	17.2	4.3
1918	17.4	3.4
1919	11.6	3.4
1920	12.9	2.4
1921	34.1	8.3
1922	32.2	7.8
1923	38.3	6.0
1924	28.1	5.2
1925	32.5	4.7

1926	29.7	4.7
1927	21.9	6.5
1928	33.4	7.8
1929	38.2	8.6
1930	46.8	10.4
1931	50.9	12.6
1932	86.1	20.5
1933	88.6	21.0
1934	78.9	21.7

Source: Direction General des Douanes (1850-1938).

Published in: Pinilla and Ayuda (2002)

TABLE T.12. SPANISH EXPORTS OF WINE (hectoliters)

	Table wine	Sherry wine	Other liquor wine	Non classified wine
1849	448,837	230,558	4,423	2,461
1850	350,981	239,299	31,475	
1851	432,891	217,606	66,459	1,114
1852	482,250	229,813	55,134	
1853	551,590	325,394	67,483	584
1854	795,382	280,083	73,824	4,834
1855	831,013	251,441	86,999	5,450
1856	837,407	311,979	84,168	3,823
1857	1,289,402	284,456	83,773	2,872
1858	723,590	163,639	63,201	2,278
1859	796,427	247,005	69,739	922
1860	1,075,035	243,182	84,319	668
1861	935,381	245,905	68,362	18,222
1862	924,518	233,621	66,198	511
1863	820,616	318,328	65,272	181
1864	961,128	327,365	64,931	3,302
1865	796,850	234,771	46,275	4,018
1866	768,231	295,035	41,827	14,209
1867	957,431	313,167	38,719	2,314
1868	1,385,336	380,043	42,898	8,598
1869	994,150	366,140	43,680	6,521
1870	1,104,426	338,715	26,115	34,211
1871	1,246,533	367,949	61,723	12,491
1872	1,466,128	468,186	25,765	1,508
1873	2,122,603	500,885	14,753	5,525
1874	1,759,541	329,776	21,531	6,450
1875	1,762,716	279,776	24,717	1,705
1876	1,435,345	310,856		92,410
1877	1,872,923	295,816		97,157
1878	2,544,629	247,996		114,182
1879	3,457,509	241,618		170,958
1880	5,808,251	271,238		142,550
1881	6,604,672	267,592		160,336
1882	7,231,205	282,854		157,050
1883	7,251,614	272,344		137,514
1884	6,156,246	244,147		110,175
1885	6,890,712	187,637		100,134
1886	6,979,020	287,203		125,754
1887	7,970,461	263,178		94,260
1888	8,724,803	254,303		97,292
1889	8,405,830	183,361		71,437
1890	9,197,687	220,321		59,916
1891	11,081,541	225,231		43,619
1892	6,543,899	192,399		23,056
1893	5,019,659	145,330		25,227

1894	3,971,425	154,279		21,536
1895	5,202,142	146,032		12,510
1896	6,559,118	105,669		8,523
1897	5,250,068	92,987		9,795
1898	6,305,629	103,730		18,146
1899	4,794,081	47,584		31,370
1900	3,823,096	45,475		8,031
1901	2,234,265	104,730		9,117
1902	1,813,689	154,079		7,288
1903	2,292,459	138,275		12,458
1904	2,163,305	122,085		31,432
1905	1,919,020	153,180		90,338
1906	1,295,751	167,095		120,929
1907	1,125,474	261,507	135,215	65,252
1908	1,282,638	284,884	151,309	45,392
1909	1,144,865	201,220	242,653	45,890
1910	2,214,353	208,994	261,865	40,644
1911	2,846,898	140,370	107,782	177,767
1912	3,073,155	129,774	94,717	182,084
1913	4,089,240	153,978	235,206	64,332
1914	2,140,543	112,377	143,599	44,757
1915	1,348,624	95,219	159,743	40,864
1916	3,988,088	171,199	238,876	50,552
1917	5,933,316	103,829	231,067	23,558
1918	2,354,893	86,538	186,618	7,126
1919	5,505,028	180,230	435,110	20,660
1920	4,549,265	86,527	280,205	12,740
1921	2,829,323	58,118	235,648	1,894
1922	2,728,876	60,683	171,482	12,526
1923	2,842,850	56,037	138,456	19,538
1924	3,107,511	72,583	261,330	31,020
1925	2,486,189	58,594	310,794	48,447
1926	2,620,984	75,074	351,679	34,968
1927	4,422,013	110,732	507,129	35,699
1928	5,502,680	75,835	329,056	44,837
1929	3,348,177	88,641	309,962	36,841
1930	2,852,546	86,890	496,978	50,764
1931	2,879,161	109,326	319,664	35,469
1932	1,528,264	84,850	348,820	10,054
1933	2,089,284	111,038	287,705	9,392
1934	1,090,002	134,213	315,087	9,160
1935	839,031	153,357	308,933	10,733

Source: Own calculations from the annual data of Estadísticas del Comercio Exterior de España, 1849-1935

TABLE T.13. SPANISH EXPORTS OF WINE (in pesetas at 1910 prices)

	Table wine	Sherry wine and other liquor wines	Non classified wine
1849	11,968,977	14,113,132	0
1850	9,359,504	16,607,333	1,278
1851	11,543,757	18,212,353	6,028
1852	12,868,716	17,941,540	2,684
1853	14,709,062	24,600,849	0
1854	21,213,194	22,759,043	0
1855	22,162,774	22,172,885	964
1856	22,342,086	25,388,790	1,129
1857	34,694,865	23,665,357	0
1858	19,497,826	14,861,623	1,092
1859	21,450,999	20,191,257	1,992
1860	28,991,228	21,113,634	26,201
1861	24,976,074	21,313,897	0
1862	24,687,207	19,089,195	3,877
1863	21,897,447	23,977,680	0
1864	25,630,083	24,716,618	1,815
1865	21,251,089	17,826,072	1,871
1866	20,496,842	21,782,731	5,085
1867	25,543,128	21,709,559	0
1868	36,950,424	26,452,620	3,247
1869	26,510,677	25,540,902	0
1870	29,457,773	24,597,763	0
1871	33,248,491	27,538,553	0
1872	39,096,741	29,739,957	0
1873	56,743,477	31,085,487	0
1874	47,623,524	21,622,668	0
1875	47,660,447	18,577,748	0
1876	38,275,871	25,233,215	0
1877	49,944,606	24,703,695	0
1878	67,856,765	23,165,032	0
1879	92,200,251	27,047,766	0
1880	154,886,691	26,661,071	0
1881	176,124,591	27,780,350	0
1882	192,832,130	28,432,479	1,156
1883	193,376,382	26,348,534	0
1884	164,166,547	22,637,951	0
1885	183,752,320	18,557,650	0
1886	186,107,192	26,341,358	0
1887	212,545,612	22,564,792	0
1888	232,661,420	22,269,617	0
1889	224,155,464	16,153,649	0
1890	245,271,637	17,465,677	0
1891	295,507,744	16,532,446	0
1892	174,503,965	13,057,151	0

1893	133,857,574	10,448,705	0
1894	105,904,676	10,698,710	0
1895	138,723,787	9,536,229	0
1896	174,909,810	6,860,770	0
1897	140,001,798	6,209,444	0
1898	168,150,103	7,468,322	0
1899	127,842,162	5,154,343	0
1900	101,949,220	3,279,833	0
1901	59,580,403	6,850,064	0
1902	48,365,041	9,618,385	0
1903	61,132,238	9,075,633	0
1904	57,688,143	9,545,484	0
1905	51,173,866	15,794,238	0
1906	34,553,352	20,721,702	0
1907	29,556,536	32,293,981	27,940
1908	33,800,774	32,778,728	29,724
1909	30,496,845	34,613,837	21,472
1910	58,009,353	36,022,255	83,992
1911	74,443,481	32,728,584	126,224
1912	79,687,535	32,275,750	90,772
1913	106,895,709	33,892,618	67,904
1914	56,475,970	22,340,283	45,788
1915	35,009,280	22,140,881	202,936
1916	104,198,261	33,644,621	162,024
1917	151,500,611	26,863,513	64,328
1918	63,056,260	20,662,131	192,292
1919	147,477,049	46,054,150	567,568
1920	125,744,103	28,889,314	567,568
1921	78,433,537	23,020,067	180,012
1922	74,837,926	18,774,498	69,600
1923	78,498,197	16,675,328	85,600
1924	86,161,692	28,609,481	149,600
1925	66,969,317	33,079,608	124,400
1926	72,368,261	32,908,768	1,207,607
1927	120,156,136	46,848,092	1,207,973
1928	144,992,192	34,943,566	1,251,491
1929	88,941,371	33,280,034	2,410,157
1930	74,854,741	46,214,932	1,989,098
1931	75,445,236	29,065,733	5,632,249
1932	41,223,231	26,923,580	4,335,548
1933	55,159,191	25,631,773	6,339,881
1934	29,080,491	29,634,658	7,169,615
1935	21,983,570	29,960,208	4,105,759

Source: Own calculations from the annual data of Estadísticas del Comercio Exterior de España, 1849-1935

Published in: Gallego and Pinilla (1986).

TABLE T.13. BREAKDOWN OF SPANISH EXPORTS OF TABLE WINE IN CASKS (Hectoliters)

	1871-75	1876-80	1881-85	1886-90	1891-95	1896-00	1901-05	1906-10	1911-15	1916-20	1921-25	1926-30	1931-35
Canary I. / Spanish N. Africa	812	385	239	2,054	8,229	9,602	18,782	27,948	57,781	54,773	119,257	133,870	82,082
France	306,631	1,793,153	5,478,542	6,979,664	5,025,214	3,918,351	946,495	427,833	1,417,650	2,757,156	1,561,649	2,789,277	953,538
United Kingdom	81,870	89,848	87,691	98,799	106,853	176,957	135,131	69,330	51,475	47,434	36,452	33,756	17,504
Others Europe	100,799	108,733	125,590	101,045	152,280	304,217	362,307	320,445	609,061	1,212,210	615,965	530,493	466,408
Latin America	1,003,287	935,783	1,013,206	974,772	977,300	798,046	576,691	532,362	479,295	227,509	163,959	134,115	39,661
North America	25,582	19,800	26,968	19,612	7,982	3,392	5,214	3,619	4,690	7,306	1,209	1,806	639
Asia	15,819	14,312	21,865	22,632	30,487	37,963	21,311	16,546	8,649	4,532	5,330	4,493	12,341
Africa	51,972	52,632	64,792	43,421	39,883	41,391	6,821	8,715	65,402	144,112	163,092	105,329	85,285
European Colonies	5,181	7,481	8,012	13,615	15,504	13,968	11,793	2,720	2,362	539	821	10,466	24,264
Not classified	0	0	0	0	0	42,516	0	0	0	0	0	0	444
Total	1,591,953	3,022,130	6,826,904	8,255,614	6,363,731	5,346,402	2,084,543	1,409,517	2,696,365	4,455,571	2,667,733	3,743,604	1,682,166

Source: Own calculations from the annual data of Estadísticas del Comercio Exterior de España, 1849-1935

Published in: Pinilla and Ayuda (2002).

REFERENCES

- Annuaire Statistique de la France* (1938), Paris.
- Aparicio, G., Ayuda, M.I. and Pinilla, V. (2002): "World consumption of Wine, 1859-1938: an obstacle to the growth of its production and trade?", in J. Maldonado (ed.), *Actas del I Simposio de la Asociación Internacional de Historia y Civilización de la Vid y el Vino*, AICHCVV: El Puerto de Santa María, vol. II, pp. 679-693.
- Ayuda, M.I. , Aparicio, G. and Pinilla, V. (1998): "France and the International Wine Trade, 1850-1938", *Cahiers Scientifiques de l'Institut Europeen de Conjoncture Viti-Vinicole*, 2, pp. 1-20.
- Carnero, T. (1980): *Expansión vinícola y atraso agrario, 1870-1900*, Ministerio de Agricultura: Madrid.
- Direction General des Douanes (1850-1938): *Tableau General du Commerce Exterieur de la France*, Paris.
- Estadísticas del Comercio Exterior de España* (1849-1935), Madrid.
- Fernández, E. (2010): "Unsuccessful responses to quality uncertainty: Brands in Spain's sherry industry, 1920-1990", *Business History*, 52, 1, pp. 100-119.
- Fernández, E. and Pinilla, V. (2014): "Historia Económica del vino en España (1850-2000)", in J.S. Castillo, J.S. and R. Compés (eds.), *Economía del vino en España y el mundo*, Cajamar Caja Rural: Almería, pp. 62-92.
- Gallego, D. (2001): "De los limitados efectos de la política arancelaria sobre las orientaciones productivas del sector agrario español (1869-1914)", in C. Sudriá, and D. Tirado (eds.), *Peseta y protección. Comercio exterior, moneda y protección en la España de la Restauración*, Universidad de Barcelona: Barcelona, pp. 45-70.
- Gallego, D. (2003): "Los aranceles, la política de comercio exterior y la estabilidad de la agricultura española (1870-1914)", *Revista Española de Estudios Agrosociales y Pesqueros*, 198, pp. 9-74.

- Gallego, D. and Pinilla, V. (1996): “Del librecambio matizado al proteccionismo selectivo: el comercio exterior de productos agrarios en España entre 1850 y 1935”, *Revista de Historia Económica*, XIV, 2 y 3, pp.371/619-420/639.
- Grupo de Estudios de Historia Rural (1991): *Estadísticas históricas de la producción agraria española, 1859-1935*, Ministerio de Agricultura Pesca y Alimentación: Madrid.
- Imperial Economic Committee (1932): *Wine. Reports of the Imperial Economic Committee. Twenty-third Report*, Imperial Economic Committee: London
- International Institute of Agriculture (1911-1939): *Annuaire International de Statistique Agricole*, International Institute of Agriculture: Rome.
- International Institute of Agriculture (1944): *Agricultural Commodities and Raw Materials*. I.I.A.: Rome
- Mitchell, B.R. (1986): *International Historical Statistics. Africa and Asia*, Macmillan: London.
- Mitchell, B.R. (1992): *International Historical Statistics. Europe, 1750-1988*, Macmillan: London.
- Mitchell, B.R. (1993): *International Historical Statistics. The Americas, 1750-1988*, Stockton Press : New York.
- Montañés, E. (2000): *La empresa exportadora del Jerez. Historia económica de González Byass, 1835-1885*, González Byass and Universidad de Cádiz: Cádiz.
- Office International du Vin (1928-1939): *Annuaire International du Vin*, Office International du Vin : Paris.
- Pan-Montojo, J. (1994): *La bodega del mundo. La vid y el vino en España (1800-1936)*, Alianza Editorial: Madrid.
- Pinilla, V. (1995): "Cambio agrario y comercio exterior en la España contemporánea", *Agricultura y Sociedad*, 75, pp. 173-179.
- Pinilla, V. and Ayuda, M.I. (2002): “The Political Economy of the Wine Trade: Spanish Exports and the International Market, 1890-1935”, *European Review of Economic History*, 6, 1, pp. 51-86 .

- Pinilla, V. and Ayuda, M.I. (2007): "The international wine market, 1850-1938: An opportunity for export growth in Southern Europe?", in G. Campbell and N. Gibert (eds.), *Wine Society and Globalization. Multidisciplinary perspectives on the Wine Industry*, Palgrave Macmillan: New York, pp. 179-199.
- Pinilla, V. and Ayuda, M.I. (2008): "Market dynamism and international trade: a case study of Mediterranean agricultural products, 1850-1935", *Applied Economics*, 40, 5, pp. 583-595.
- Pinilla, V. and Ayuda, M.I. (2009): "Foreign markets, globalisation and agricultural change in Spain", in V. Pinilla (ed.), *Markets and Agricultural Change in Europe from the 13th to the 20th century*, Brepols Publishers: Turnhout, pp. 173-208.
- Pinilla, V. and Ayuda, M.I. (2010): "Taking advantage of globalization? Spain and the building of the International market in Mediterranean horticultural products, 1850-1935", *European Review of Economic History*, 14, 2, pp. 239-274.
- Pinilla, V. and Serrano, R. (2008): "The Agricultural and Food Trade in the First Globalization: Spanish Table Wine Exports 1871 to 1935- A Case Study", *Journal of Wine Economics*, 3, 2, pp. 132-148.
- Simpson, J. (1995). *Spanish Agriculture: the Long Siesta, 1765-1965*. Cambridge University Press: Cambridge, UK.
- Simpson, J. (2004): "Selling to reluctant drinkers: the British wine market, 1860-1914", *Economic History Review*, LVII, 1, pp. 80-108.
- Simpson, J. (2005): "Too little regulation? The British market for Sherry, 1840-90", *Business History*, 46, 3, pp. 367-382.
- Simpson, J. (2010): "The British Wine Market and the International Wine Trade: the limits to export-led growth before 1914", in J. Morilla et al. (eds.), *Las claves del desarrollo económico y social. Homenaje a Gabriel Tortella*, Editorial Lid: Madrid, pp. 393-411.
- Simpson, J. (2011): *Creating Wine. The Emergence of a World Industry, 1840-1914*, Princeton University Press: Princeton.
- Sommario di Statische Storiche Italiane (1861-1955)
- United States Tariff Commission (1939): *Grapes, Raisins and Wines*, Washington.

