

Elsevier Research Intelligence

SciVal: helping your institution strategy

Jornadas CRAI, September 2016

Tomaso Benedet,
Solutions Sales Manager South Europe

What is SciVal?



SciVal is a research management service that easily allows you to:

- Evaluate your institution
- Benchmark your institution against others
 - Strengthen your collaboration
- Find your strengths and weaknesses

Thus...

Helps you design and execute
your research strategy

Where do we get the data?





Perspektywy

FCT

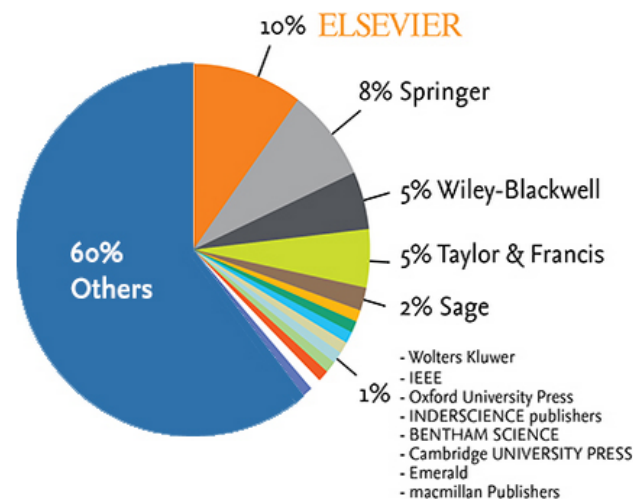
Fundação para a Ciência e a Tecnologia
MINISTÉRIO DA CIÊNCIA, TECNOLOGIA E ENSINO SUPERIOR

Scopus®

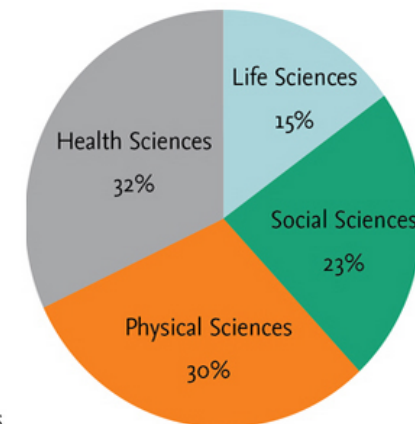
The largest abstract and citation database of research information

60 M records and **22,000+** active titles from more than **5,000** international publishers. More than **4,200** Gold Open Access journals indexed

Publishers indexed in Scopus



Subject coverage in Scopus

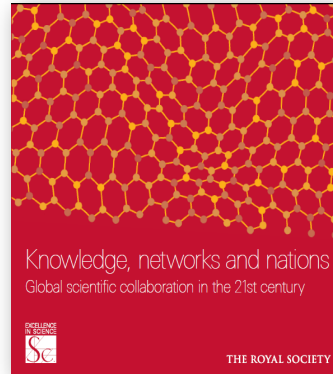


Informing national research assessments, policies & reports

- Provision of citation data services for national assessments as well as data, analyses and insights for national and international reports



BIS reports '11 & '13



Royal Society '11



Stem Cell Research '13

REF2014

ERA 2015 | Excellence in Research for Australia

National Assessments including UK '14 & Australia '15



THE World University Rankings (from '15) and data partner for QS



Science Europe '13

Continued Investment in the Scopus Platform

- Content expansion program

Books

120k Books added by 2015 (since mid 2013), 10k Books each year there after (Monographs, edited volumes, major reference works, graduate level text books)

Conference papers

Serial and one-off conferences from authoritative, respected lists.

Around 1,000 new conference titles, 6,000 conference events, 400K conference papers and 5M references, Backfill from 2005 – 2012 (8 years)

Over 7 million conference papers now in Scopus.

Citation Expansion

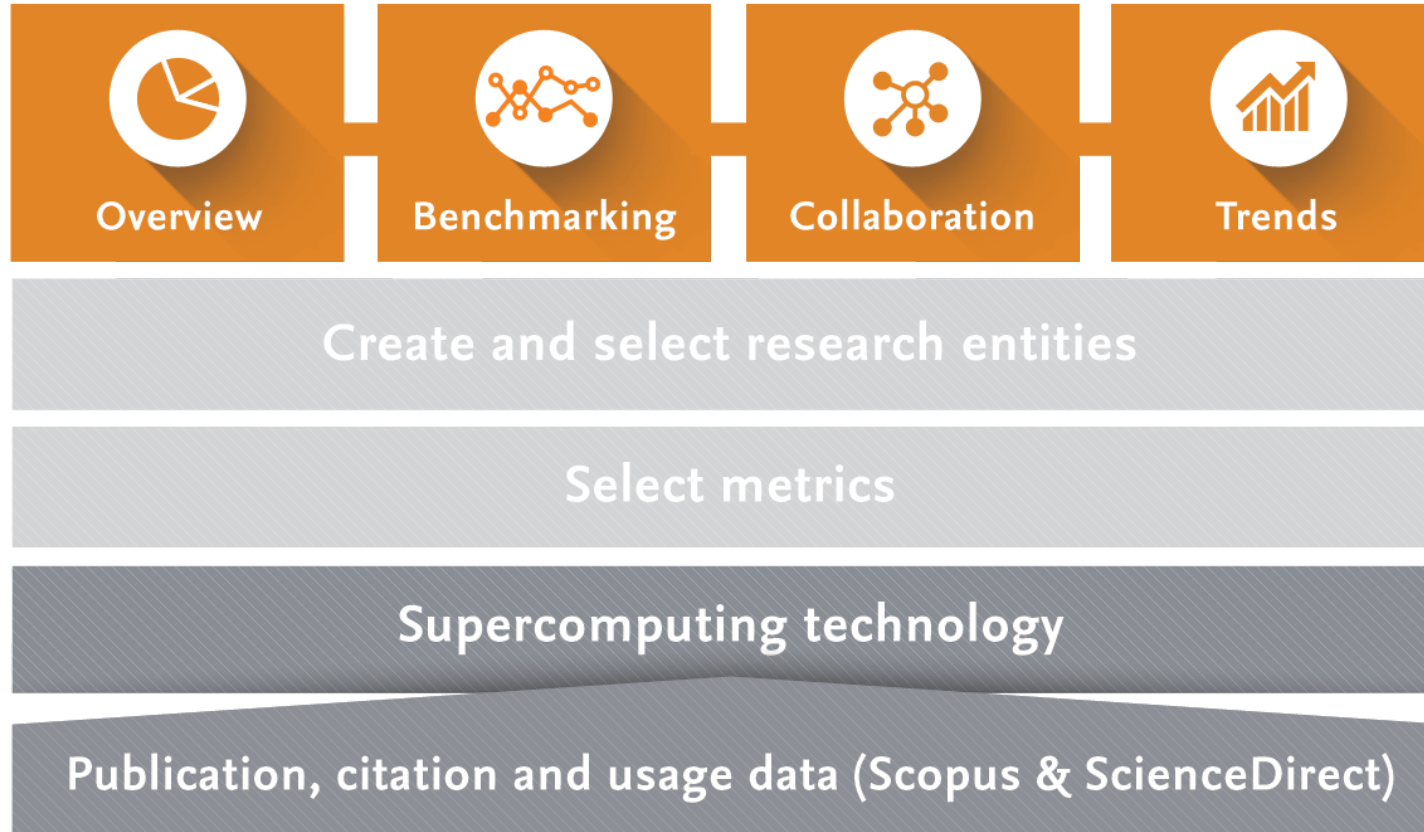
Citations will go back to 1970 (currently 1996)

Estimated 8M+ articles will be (re-) processed to include cited references from 1970 onwards

What do we do with Scopus data?



We offer you data from over 4,600 Institutions from 223 country, plus the possibility to customize your own Groups, Publication sets or research areas



Offer you a set of around 110
trillion pre-calculated data points
all available in one click

What are the questions addressed using SciVal?

“How can we demonstrate what are our main strength and position my university?”



What are the questions addressed using SciVal?

“How can we demonstrate what are our main strength and position my university?”



Overview

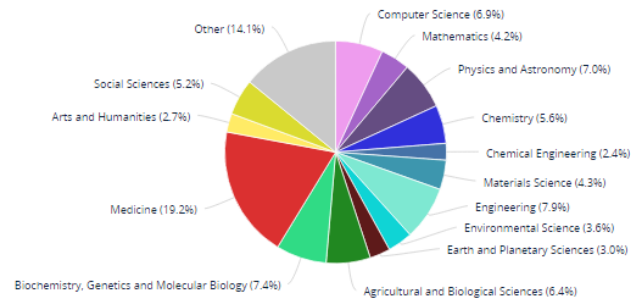
Get a high-level overview of the research performance of your Institution, other Institutions, Countries and Groups of Researchers.

Overall research performance

[Download page as PDF](#) [Export](#)

Publications	Citations	Authors	Field-Weighted Citation Impact	Citations per Publication
474,254 ▲	2,941,721	365,016 ▲	1.29	6.2

[View list of publications](#)



[Analyze in more detail](#)

What are the questions addressed using SciVal?

“I want to explore the various scenarios I’m considering to set up a centre of excellence. How can the data provide me with insights?”



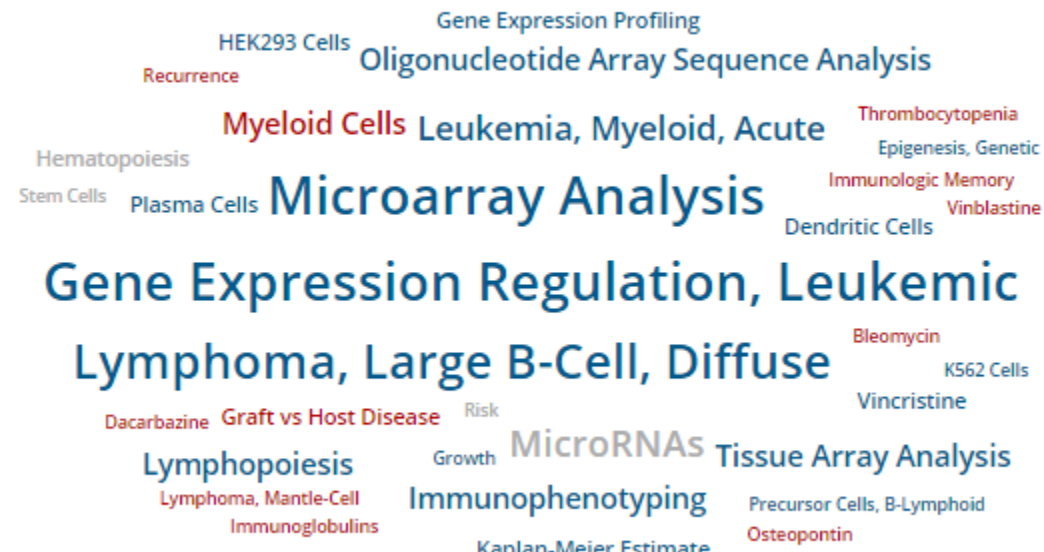
What are the questions addressed using SciVal?



Trends NEW

Get the current scientific trends to determine a new research strategy, find collaboration opportunities and rising stars.

“I want to explore the various scenarios I’m considering to set up a centre of excellence. How can the data provide me with insights?”

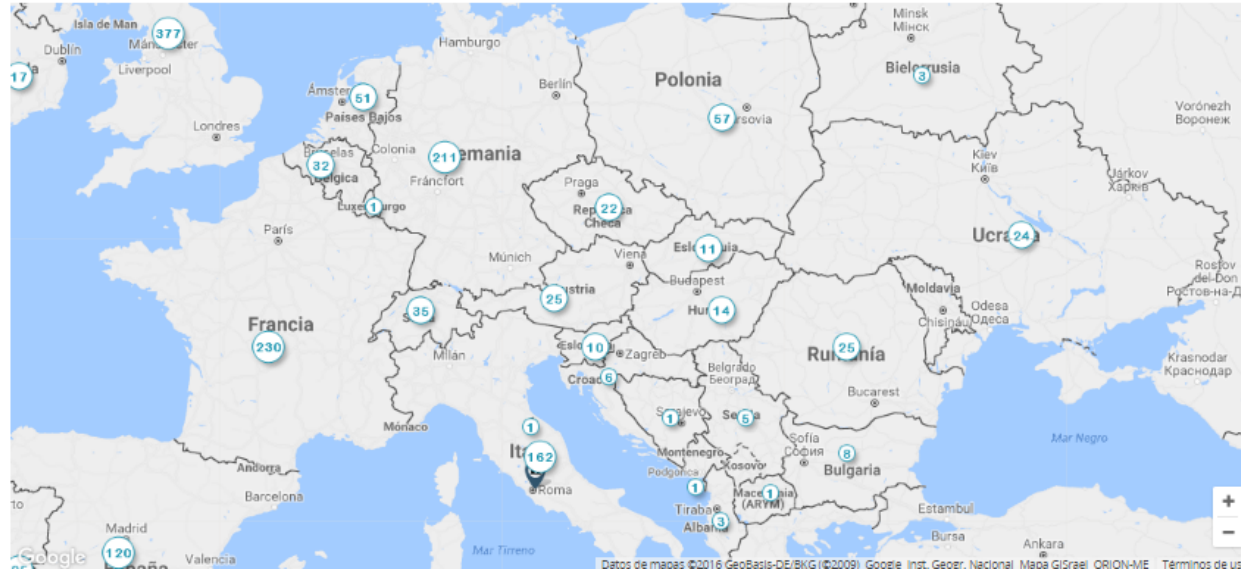


What are the questions addressed using SciVal?

“My VC is going to China; who do our academics collaborate with there and how can we expand?”




What are the questions addressed using SciVal?



“My VC is going to China; who do our academics collaborate with there and how can we expand?”



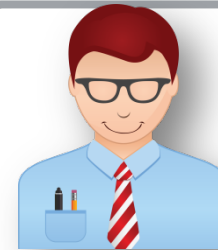


Collaboration

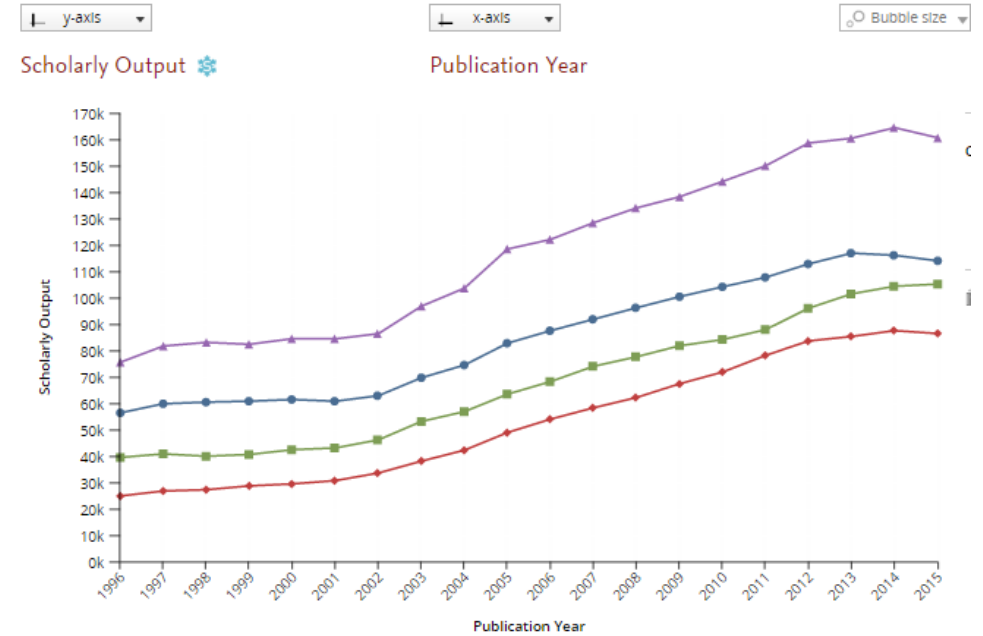
Explore the collaboration network of both your Institution and other Institutions.

What are the questions addressed using SciVal?

“How can I see who’s excelling in a specific subject compared to my researchers, for potential collaboration opportunities?”



What are the questions addressed using SciVal?



Benchmarking

Compare and benchmark your Institution to other institutions, Researchers and Groups of Researchers using a variety of metrics.

“How can I see who’s excelling in a specific subject compared to my researchers, for potential collaboration opportunities?”



Thanks!!

t.benedet@elsevier.com

You may find more information at:
<https://www.elsevier.com/research-intelligence>